

# Altamira

SW 336 St & SE 12 Ave  
Homestead, FL 33034  
855-865-0111

Altamira is an amenity-rich master-planned community offering brand-new single-family homes and townhomes with a golf course, coming soon to Homestead, FL.

Feedback

## Amenities

Innovative single family, Next Gen® and multi-family homes with inspired amenities.

Swimming Pool

Golf Course

Clubhouse

Fitness Center

Tot Lot

## What's nearby

Located in the beautiful city of Homestead, FL.

Publix Super Market at Oasis Plaza

Kitchen Grill

Casavana Cuban Cuisine

BJ's Wholesale Club

China Yan Chinese

Sonoma Clubhouse

Restaurant

McDonald's

Amexicana Kitchen

Little Caesars Pizza

Chili's Grill & Bar

It's Just Wings

Portofino Coal Fired Pizza

# Granada Collection

Madeira is a collection offering brand-new single-family homes for sale at the Altamira master-planned community in Homestead, FL. Residents enjoy access to a range of exclusive amenities, including an expansive clubhouse with a fitness center, restaurant and bar, golf pro shop, ball room, gathering space and business center. A swimming pool, tennis courts, BBQ area, golf course and parks are also included. The local area is host to endless attractions, the Homestead Speedway, Keys Gate Tennis Club, dining, shopping and entertainment.

## Floorplans

### Avila

3 bd . 2 ba . 1 half ba . 1,714 ft<sup>2</sup>

### Lucena

4 bd . 2 ba . 1 half ba . 1,875 ft<sup>2</sup>

### Oviedo

3 bd . 2 ba . 1 half ba . 2,161 ft<sup>2</sup>

### Toledo

4 bd . 2 ba . 1 half ba . 2,399 ft<sup>2</sup>

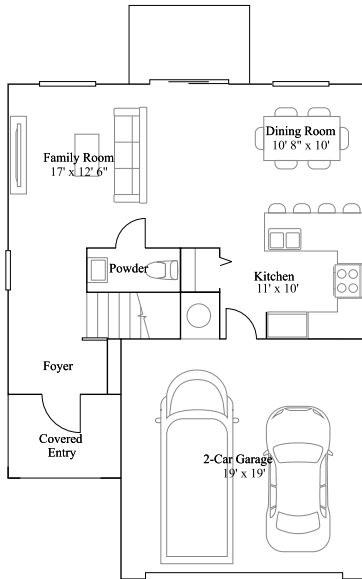
### Zamora

5 bd . 3 ba . 2,656 ft<sup>2</sup>

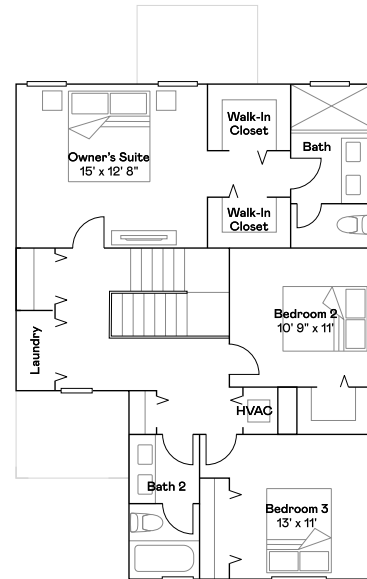
# Avila

3 bd . 2 ba . 1 half ba . 1,714 ft<sup>2</sup>

1st Floor



2nd Floor



Feedback

Available Exteriors



Exterior A

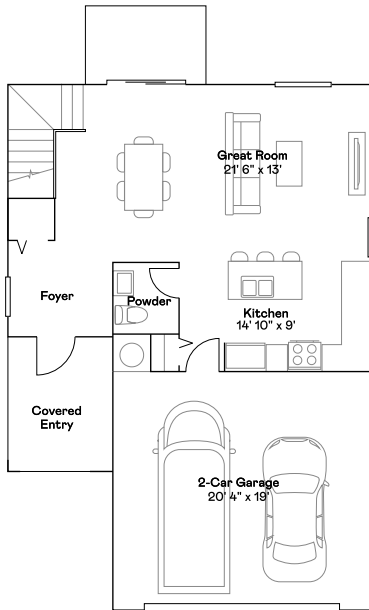


Exterior B

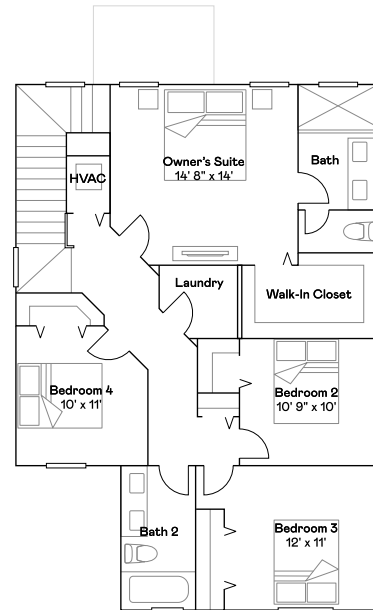
# Lucena

4 bd . 2 ba . 1 half ba . 1,875 ft<sup>2</sup>

1st Floor



2nd Floor



Feedback

Available Exteriors



Exterior A

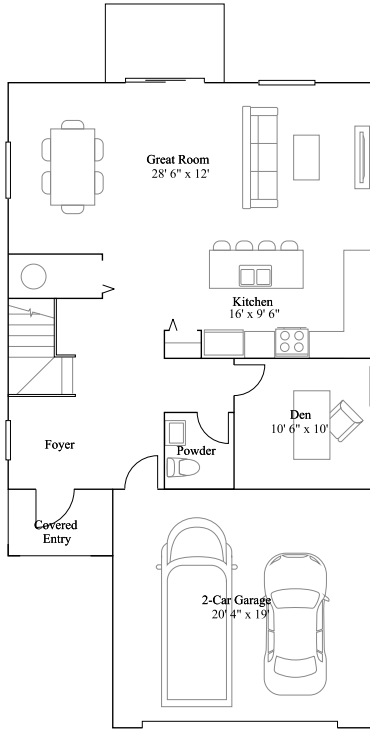


Exterior B

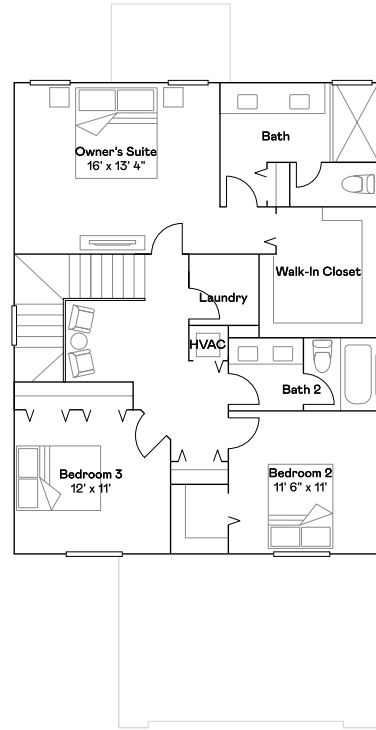
# Oviedo

3 bd . 2 ba . 1 half ba . 2,161 ft<sup>2</sup>

1st Floor



2nd Floor



Feedback

Available Exteriors



Exterior A

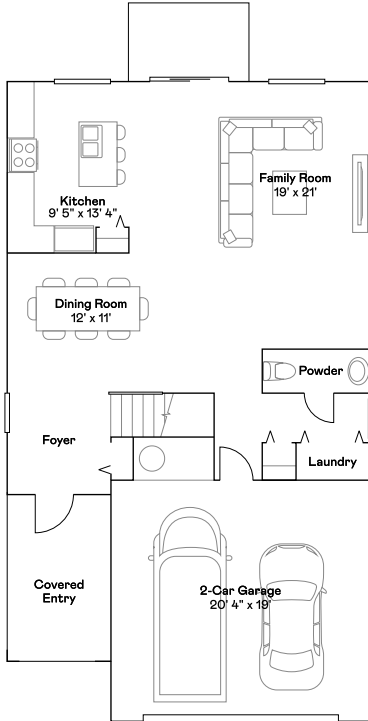


Exterior B

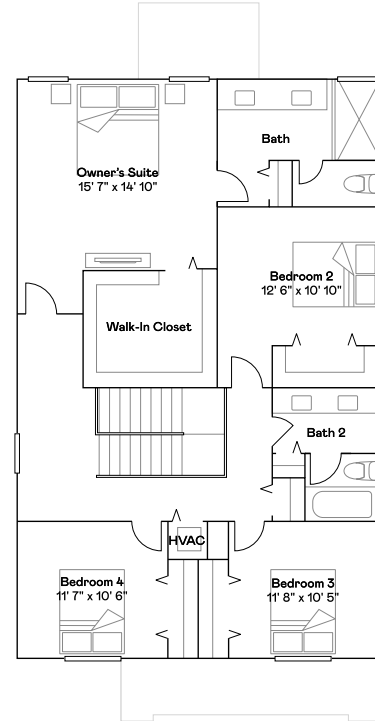
# Toledo

4 bd . 2 ba . 1 half ba . 2,399 ft<sup>2</sup>

1st Floor



2nd Floor



Available Exteriors



Exterior A



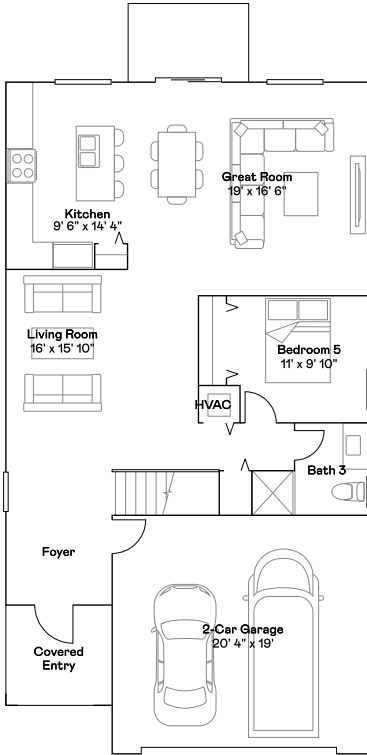
Exterior B

Feedback

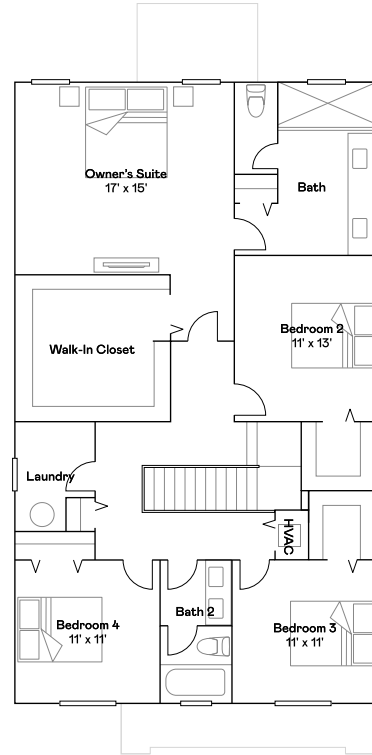
# Zamora

5 bd . 3 ba . 2,656 ft<sup>2</sup>

1st Floor



2nd Floor



Available Exteriors



Exterior A



Exterior B

Feedback

# Malaga Collection

Malaga is a collection offering brand-new single-family homes for sale at the Altamira master-planned community in Homestead, FL. Residents enjoy access to a range of exclusive amenities, including an expansive clubhouse with a fitness center, restaurant and bar, golf pro shop, ball room, gathering space and business center. A swimming pool, tennis courts, BBQ area, golf course and parks are also included. The local area is host to endless attractions, the Homestead Speedway, Keys Gate Tennis Club, dining, shopping and entertainment.

## Floorplans

### Anchor

4 bd . 3 ba . 1,982 ft<sup>2</sup>

### Ballast

4 bd . 3 ba . 2,189 ft<sup>2</sup>

### Compass

4 bd . 3 ba . 2,217 ft<sup>2</sup>

### Harbor

4 bd . 2 ba . 1 half ba . 2,527 ft<sup>2</sup>

### Starfish

4 bd . 3 ba . 1 half ba . 2,915 ft<sup>2</sup>

### Voyage

5 bd . 3 ba . 1 half ba . 3,105 ft<sup>2</sup>

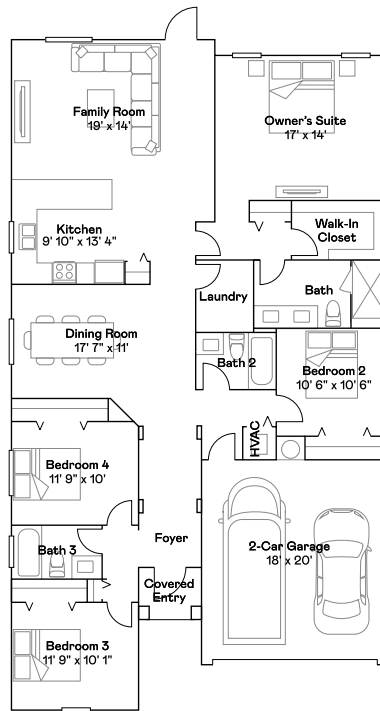


# Anchor

**Available options include:** Optional living/dining room

4 bd . 3 ba . 1,982 ft<sup>2</sup>

1st Floor



Feedback

Available Exteriors



Exterior A

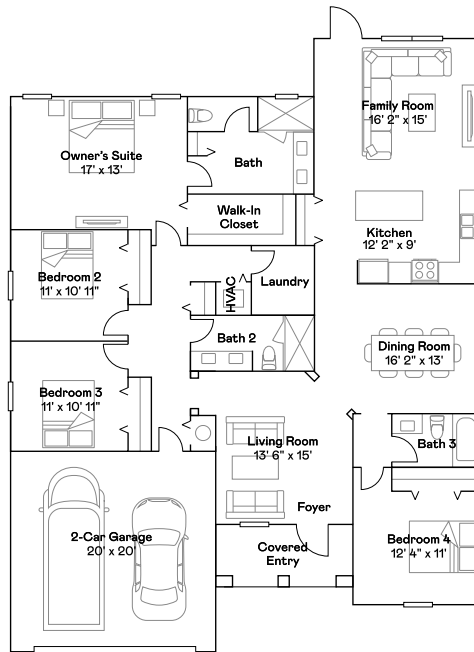


Exterior B

# Ballast

4 bd . 3 ba . 2,189 ft<sup>2</sup>

1st Floor



Feedback

Available Exteriors



Exterior A

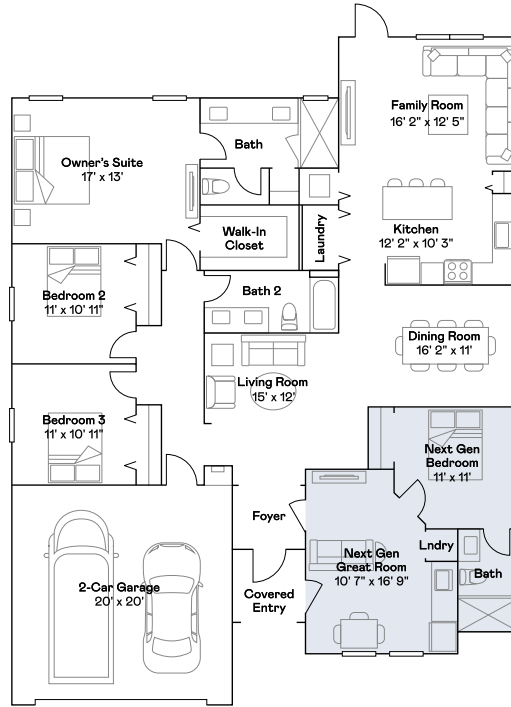


Exterior B

# Compass

4 bd . 3 ba . 2,217 ft<sup>2</sup>

1st Floor



Feedback

Available Exteriors



Exterior A

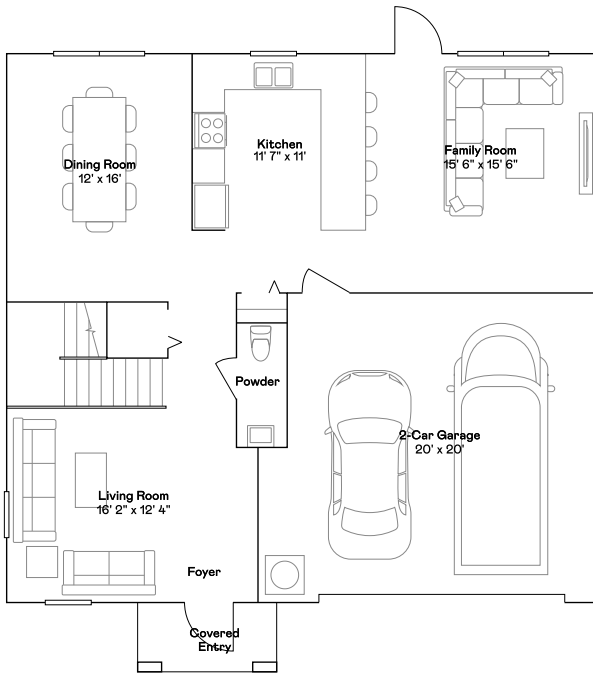


Exterior B

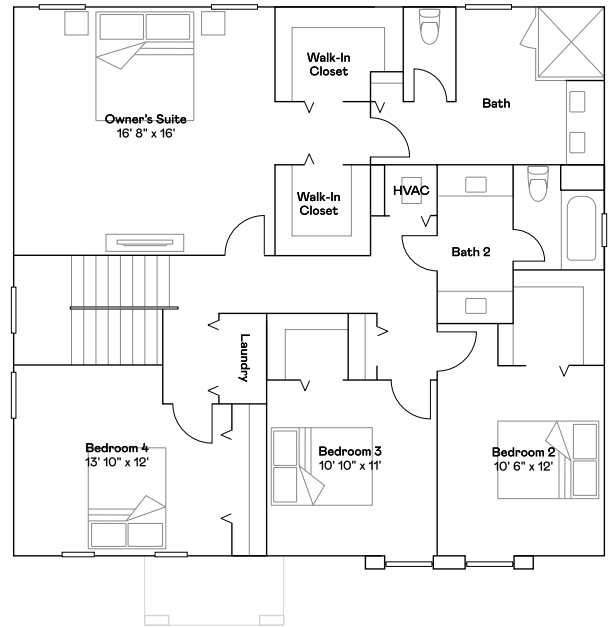
# Harbor

4 bd . 2 ba . 1 half ba . 2,527 ft<sup>2</sup>

1st Floor



2nd Floor



Feedback

Available Exteriors



Exterior A

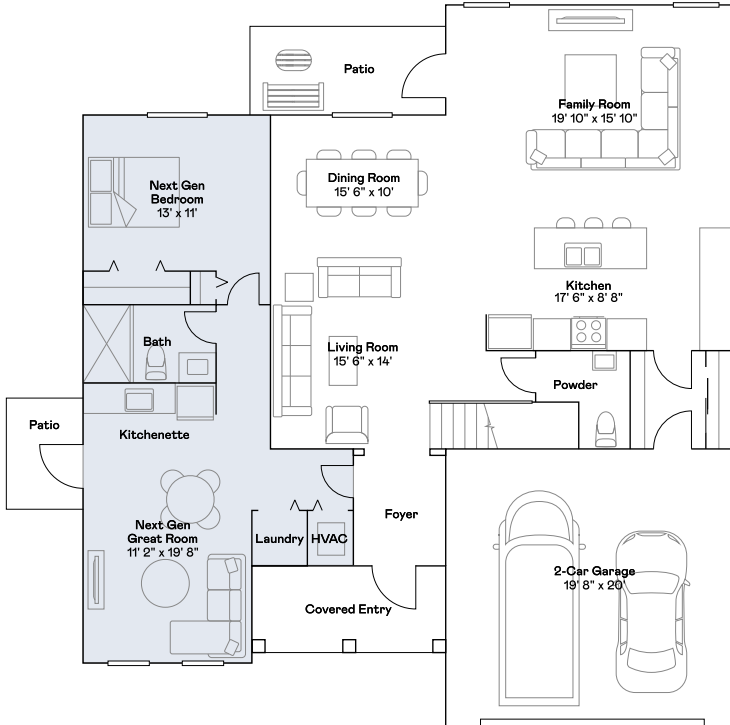


Exterior B

# Starfish

4 bd . 3 ba . 1 half ba . 2,915 ft<sup>2</sup>

1st Floor



2nd Floor



Feedback

Available Exteriors



Exterior A

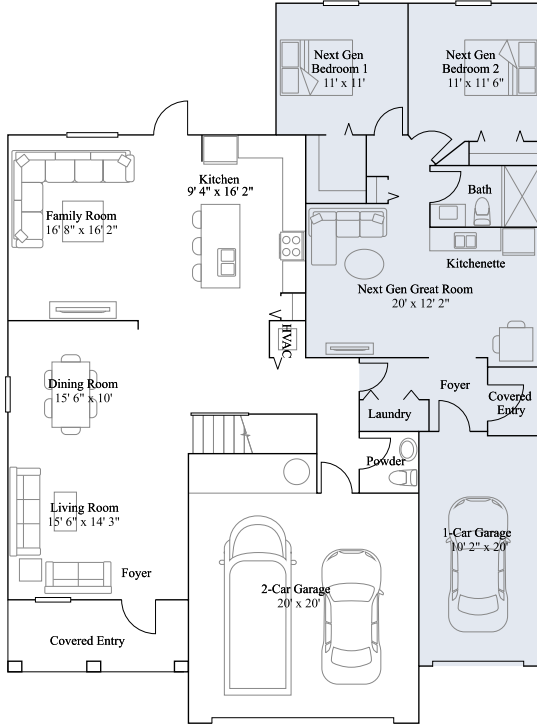


Exterior B

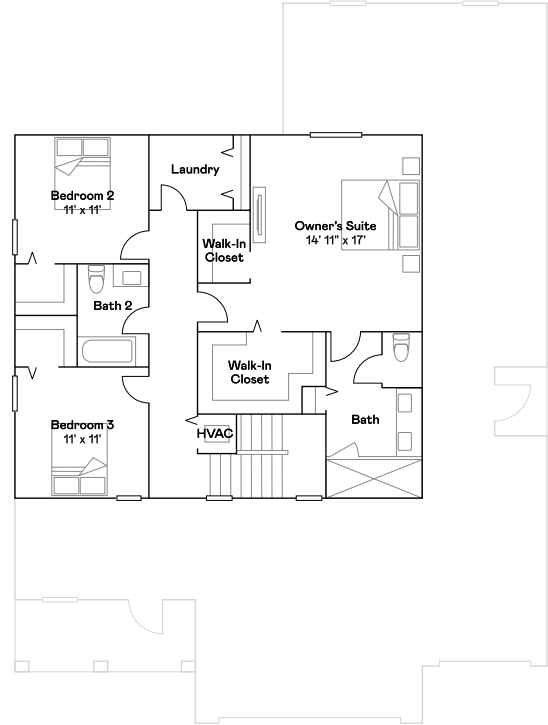
# Voyage

5 bd . 3 ba . 1 half ba . 3,105 ft<sup>2</sup>

1st Floor



2nd Floor



Feedback

Available Exteriors



Exterior A



Exterior B

# Castellon Collection

Castellon is a collection offering brand-new townhomes for sale at the Altamira master-planned community in Homestead, FL. Residents enjoy access to a range of exclusive amenities, including an expansive clubhouse with a fitness center, restaurant and bar, golf pro shop, ball room, gathering space and business center. A swimming pool, tennis courts, BBQ area, golf course and parks are also included. A swimming pool, tennis courts, BBQ area, golf course and parks are also included. The local area is host to endless attractions, the Homestead Speedway, Keys Gate Tennis Club, dining, shopping and entertainment.

## Floorplans

### Avignon

3 bd . 2 ba . 1 half ba . 1,334 ft<sup>2</sup>

### Bordeaux

3 bd . 2 ba . 1 half ba . 1,443 ft<sup>2</sup>

### Dijon

3 bd . 2 ba . 1 half ba . 1,697 ft<sup>2</sup>

### Marsielle

4 bd . 2 ba . 1 half ba . 1,828 ft<sup>2</sup>

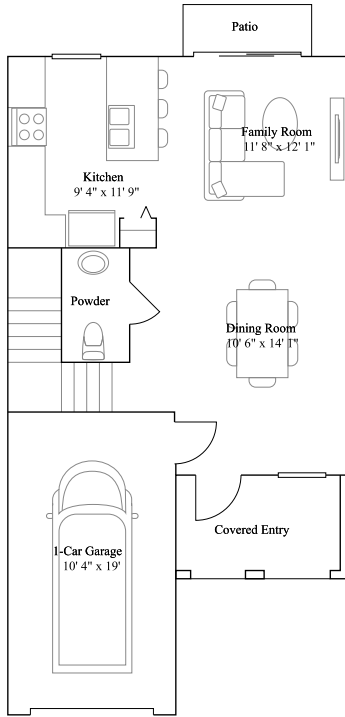
### Lorient

3 bd . 2 ba . 1 half ba . 1,828 ft<sup>2</sup>

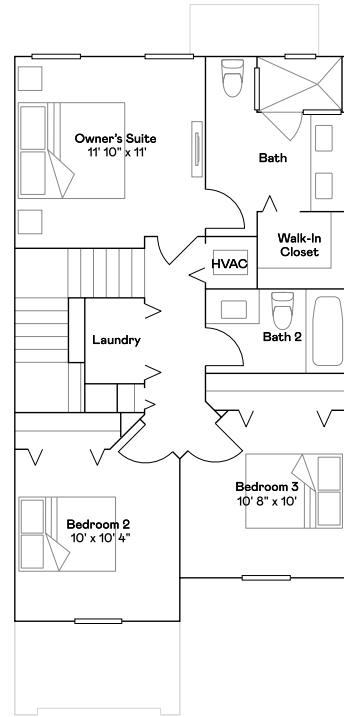
# Avignon

3 bd . 2 ba . 1 half ba . 1,334 ft<sup>2</sup>

1st Floor



2nd Floor



Available Exteriors



Exterior Front



Exterior Back

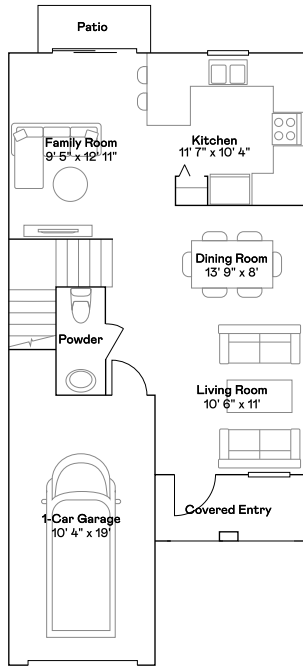
Feedback



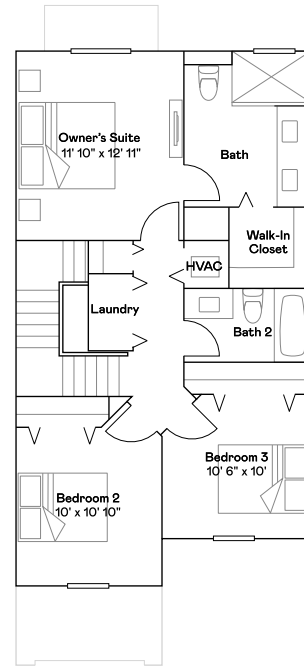
# Bordeaux

3 bd . 2 ba . 1 half ba . 1,443 ft<sup>2</sup>

1st Floor



2nd Floor



Available Exteriors



Exterior Front



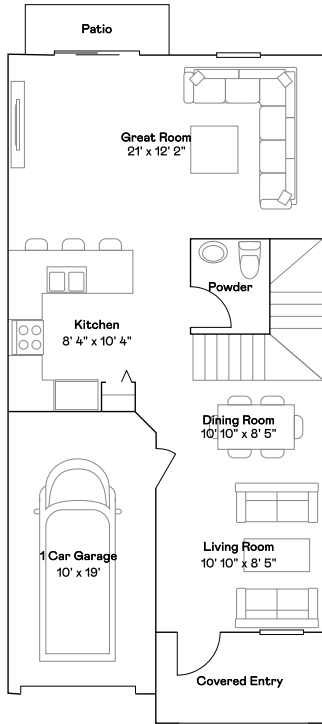
Exterior Back

Feedback

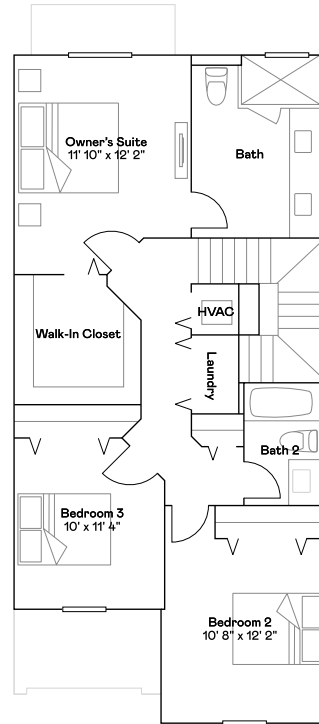
# Dijon

3 bd . 2 ba . 1 half ba . 1,697 ft<sup>2</sup>

1st Floor



2nd Floor



Available Exteriors



Exterior Front



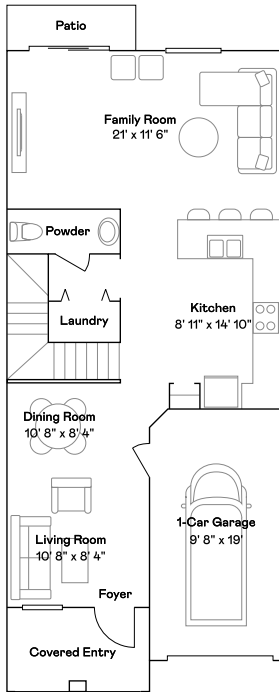
Exterior Back

Feedback

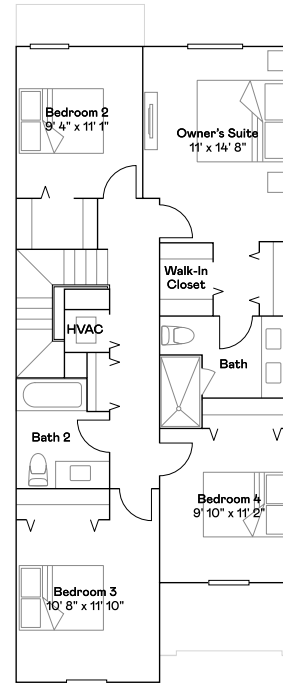
# Marsielle

4 bd . 2 ba . 1 half ba . 1,828 ft<sup>2</sup>

1st Floor



2nd Floor



Available Exteriors



Exterior Front



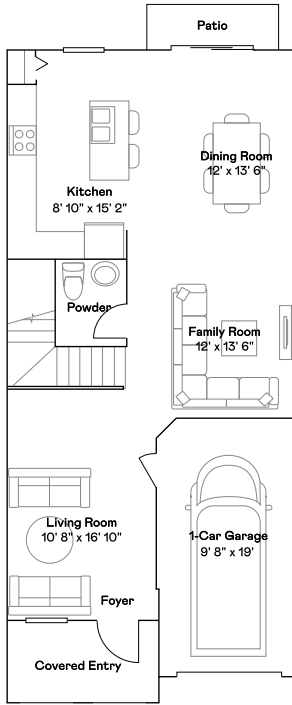
Exterior Back

Feedback

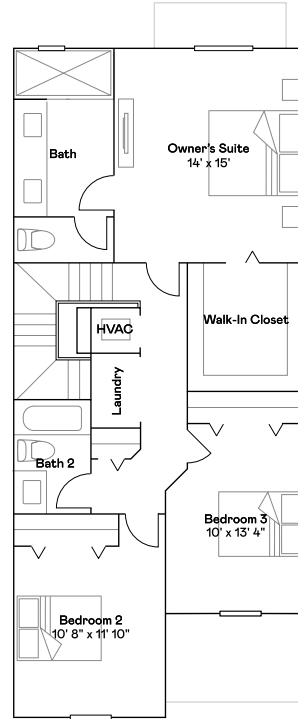
# Lorient

3 bd . 2 ba . 1 half ba . 1,828 ft<sup>2</sup>

1st Floor



2nd Floor



Available Exteriors



Exterior Front



Exterior Back

Feedback

# Andalucia Collection

Andalucia is a collection offering brand-new townhomes for sale at the Altamira master-planned community in Homestead, FL. Residents enjoy access to a range of exclusive amenities, including an expansive clubhouse with a fitness center, restaurant and bar, golf pro shop, ball room, gathering space and business center. A swimming pool, tennis courts, BBQ area, golf course and parks are also included. The local area is host to endless attractions, the Homestead Speedway, Keys Gate Tennis Club, dining, shopping and entertainment.

## Floorplans

### Bandol

3 bd . 3 ba . 1,334 ft<sup>2</sup>

### Casis

3 bd . 2 ba . 1 half ba . 1,414 ft<sup>2</sup>

### Monte Carlo

3 bd . 2 ba . 1 half ba . 1,489 ft<sup>2</sup>

### Reserve

3 bd . 2 ba . 1 half ba . 1,545 ft<sup>2</sup>

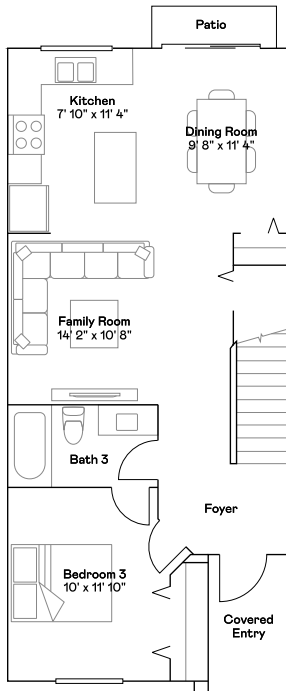
### Vence

3 bd . 2 ba . 1 half ba . 1,668 ft<sup>2</sup>

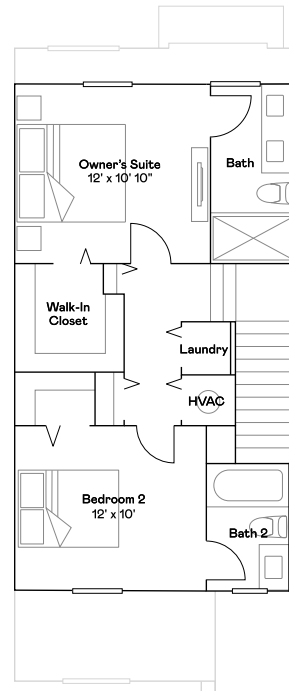
# Bandol

3 bd . 3 ba . 1,334 ft<sup>2</sup>

1st Floor



2nd Floor



Feedback

Available Exteriors



Exterior Front

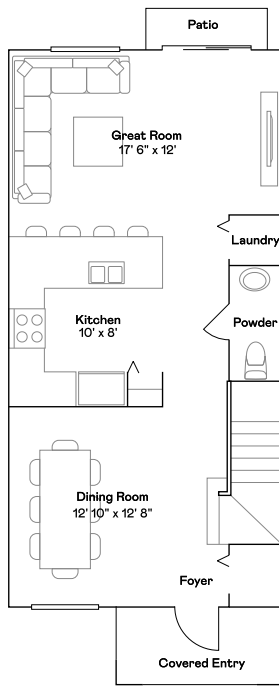


Exterior Back

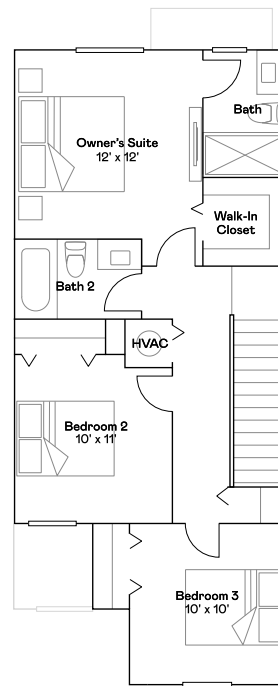
# Casis

3 bd . 2 ba . 1 half ba . 1,414 ft<sup>2</sup>

1st Floor



2nd Floor



Feedback

Available Exteriors



Exterior Front

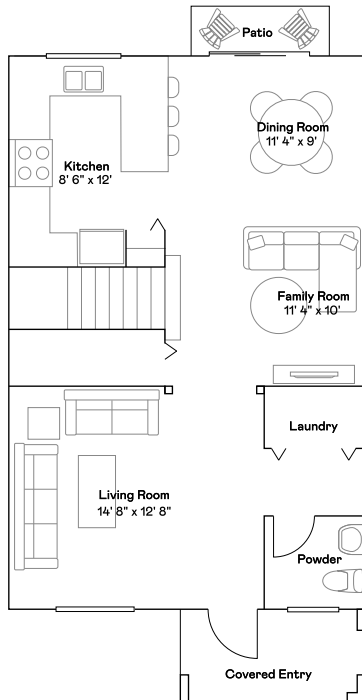


Exterior Back

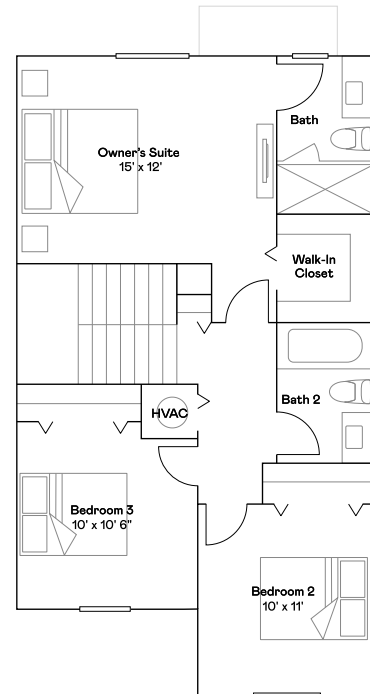
# Monte Carlo

3 bd . 2 ba . 1 half ba . 1,489 ft<sup>2</sup>

1st Floor



2nd Floor



Available Exteriors



Exterior Front



Exterior Back

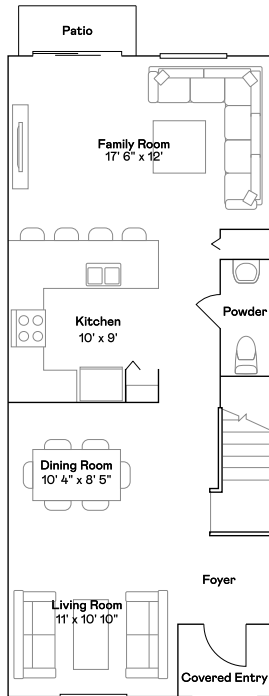
Feedback



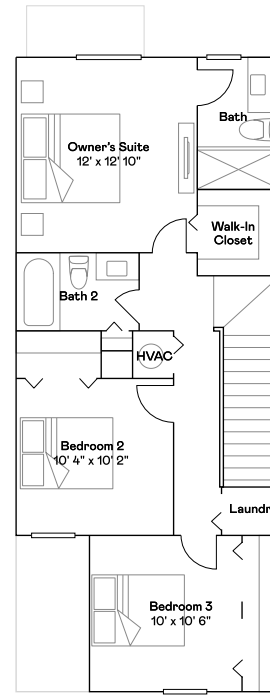
# Reserve

3 bd . 2 ba . 1 half ba . 1,545 ft<sup>2</sup>

1st Floor



2nd Floor



Available Exteriors



Exterior Front



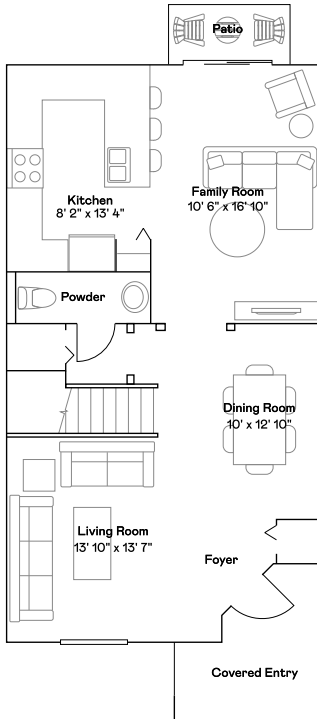
Exterior Back

Feedback

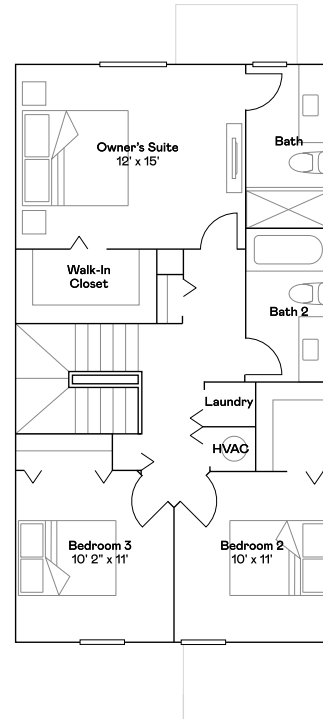
# Vence

3 bd . 2 ba . 1 half ba . 1,668 ft<sup>2</sup>

1st Floor



2nd Floor



Available Exteriors



Exterior Front



Exterior Back

Feedback

Availability

## Find the home that's right for you.

Prices and availability as of December 11, 2023. All subject to change.

Homesite	Price	Details	Plan	Address
0407	High \$500K	3 bd . 2 ba . 1 half ba . 1,714 ft <sup>2</sup>	Avila	TBD
0404	Low \$600K	4 bd . 2 ba . 1 half ba . 1,875 ft <sup>2</sup>	Lucena	TBD
0406	Low \$600K	4 bd . 2 ba . 1 half ba . 1,875 ft <sup>2</sup>	Lucena	TBD
0411	High \$500K	4 bd . 2 ba . 1 half ba . 1,875 ft <sup>2</sup>	Lucena	TBD
1002	High \$500K	4 bd . 2 ba . 1 half ba . 1,875 ft <sup>2</sup>	Lucena	TBD
0403	Low \$600K	4 bd . 2 ba . 1 half ba . 2,399 ft <sup>2</sup>	Toledo	TBD
0410	Low \$600K	4 bd . 2 ba . 1 half ba . 2,399 ft <sup>2</sup>	Toledo	TBD
1001	Mid \$600K	4 bd . 2 ba . 1 half ba . 2,399 ft <sup>2</sup>	Toledo	TBD
1003	Mid \$600K	4 bd . 2 ba . 1 half ba . 2,399 ft <sup>2</sup>	Toledo	TBD
0405	High \$600K	5 bd . 3 ba . 2,656 ft <sup>2</sup>	Zamora	TBD
0409	Mid \$600K	5 bd . 3 ba . 2,656 ft <sup>2</sup>	Zamora	TBD
1102	Mid \$600K	4 bd . 3 ba . 1,982 ft <sup>2</sup>	Anchor	2335 SE 24 CT
1101	High \$600K	4 bd . 3 ba . 2,189 ft <sup>2</sup>	Ballast	2315 SE 24 CT

Feedback

Homesite	Price	Details	Plan	Address
1105	Mid \$600K	4 bd . 3 ba . 2,189 ft <sup>2</sup>	Ballast	2425 SE 23 RD
1201	High \$600K	4 bd . 3 ba . 2,189 ft <sup>2</sup>	Ballast	2341 SE 24 DR
1103	High \$600K	4 bd . 3 ba . 2,217 ft <sup>2</sup>	Compass	2355 SE 24 CT
1104	Mid \$700K	4 bd . 3 ba . 1 half ba . 2,915 ft <sup>2</sup>	Starfish	2415 SE 23 RD
1204	Mid \$700K	4 bd . 3 ba . 1 half ba . 2,915 ft <sup>2</sup>	Starfish	2342 SE 24 CT
A004	Mid \$400K	3 bd . 2 ba . 1 half ba . 1,334 ft <sup>2</sup>	Avignon	TBD
A001	High \$400K	3 bd . 2 ba . 1 half ba . 1,697 ft <sup>2</sup>	Dijon	TBD
A006	High \$400K	3 bd . 2 ba . 1 half ba . 1,828 ft <sup>2</sup>	Lorient	TBD
A002	High \$400K	4 bd . 2 ba . 1 half ba . 1,828 ft <sup>2</sup>	Marseille	TBD
A005	High \$400K	4 bd . 2 ba . 1 half ba . 1,828 ft <sup>2</sup>	Marseille	TBD
8901	Mid \$400K	3 bd . 3 ba . 1,334 ft <sup>2</sup>	Bandol	TBD
8902	Mid \$400K	3 bd . 3 ba . 1,334 ft <sup>2</sup>	Bandol	TBD
8906	Mid \$400K	3 bd . 3 ba . 1,334 ft <sup>2</sup>	Bandol	TBD
8905	Mid \$400K	3 bd . 2 ba . 1 half ba . 1,414 ft <sup>2</sup>	Casis	TBD
8904	Mid \$400K	3 bd . 2 ba . 1 half ba . 1,489 ft <sup>2</sup>	Monte Carlo	TBD

Feedback

Plan your visit

## Community information

Location	Hours	Phone
1532 SE 27TH Terrace Homestead, FL 33035	Mon	10:00 - 6:00
	Tue	10:00 - 6:00
	Wed	10:00 - 6:00
	Thu	10:00 - 6:00
	Fri	10:00 - 6:00
	Sat	10:00 - 6:00
	Sun	10:00 - 6:00
		855-865-0111

### Welcome Home Center

1532 SE 27TH Terrace  
Homestead, FL 33035

### HOA & Tax information

Approx monthly HOA fees - \$305.56

Approximate tax rate - 1.58%

Feedback

# Why Lennar

We take pride in providing the easiest way to buy a home.

Where you want to live

We understand how you want to live, and create homes in communities in some of the most sought-after cities across the county.

A simpler way to buy

Our family of companies can assist you with your mortgage, title and insurance needs - allowing you to save time and money.

Something for everyone

We understand homebuilding, and people. Our homes cater to a variety of lifestyles, and reflect the culture and region in which they're built.

Features, amenities, floor plans, elevations, and designs vary and are subject to changes or substitution without notice. Items shown are artist's renderings and may contain options that are not standard on all models or not included in the purchase price. Availability may vary. Sq. ft. and dimensions are estimated; actual sq. ft. and dimensions will differ. Garage/bay sizes may vary from home to home and may not accommodate all vehicles. This is not an offer in states where prior registration is required. Void where prohibited by law. Copyright © 2021 Lennar Corporation. Lennar and the Lennar logo are U.S. registered service marks or service marks of Lennar Corporation and/or its subsidiaries. Seller's Broker: Lennar Realty, Inc. Construction License(s): CGC1518166. Date 1/22



Copyright © 2023 Lennar Corporation. All right reserved.

Printed on 11/12/2023