



**D·R·HORTON**  
*America's Builder*

  
**Highland Oaks**

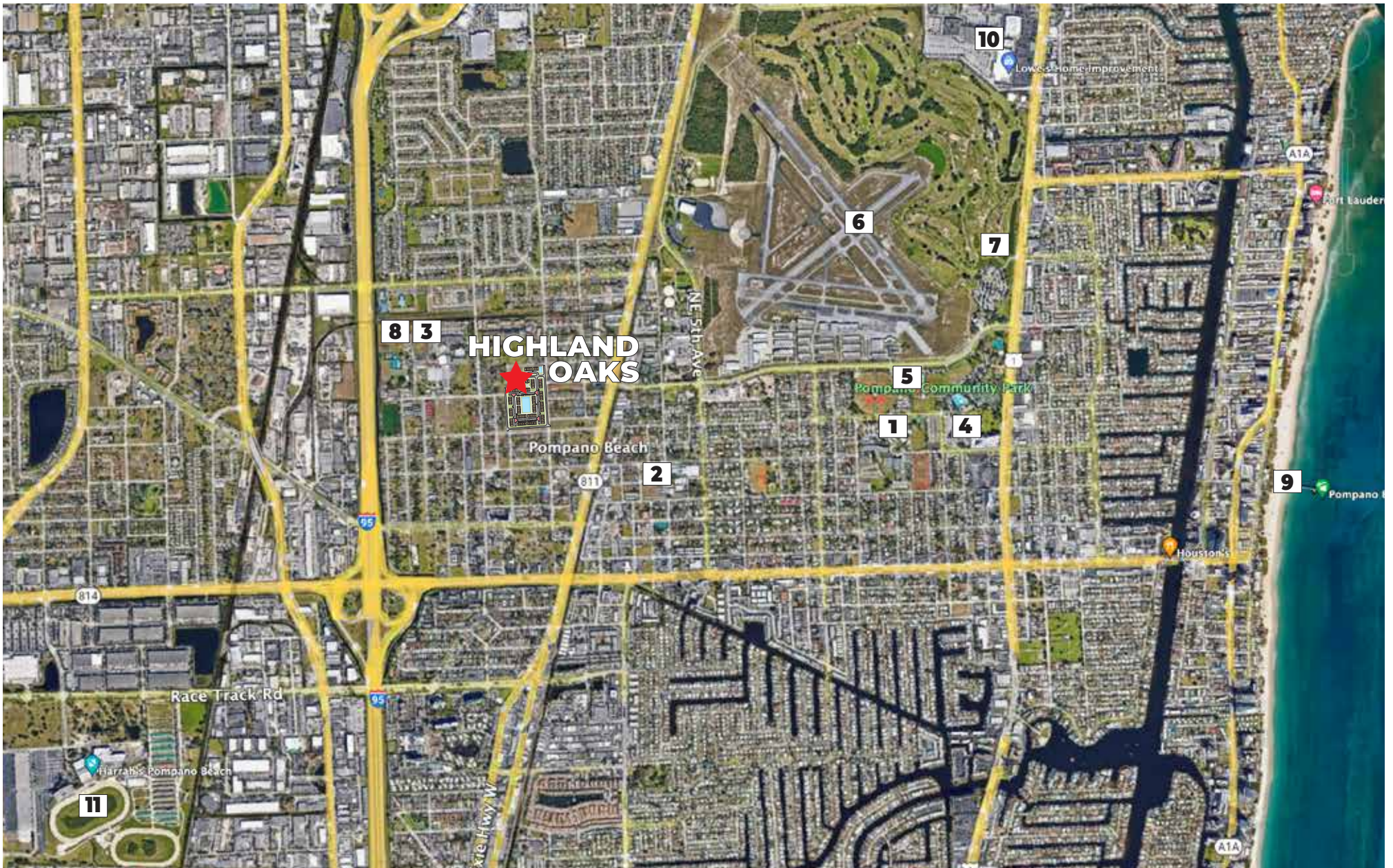
**TOWNHOMES**  
**Express Series<sup>SM</sup>**  
Pompano Beach



**D·R·HORTON**  
*America's Builder*

  
**Highland Oaks**

AMENITIES | Coming Soon  
Tot Lot, Seating Area, Multi-Purpose Court  
Walking Path Around Community Lake



## NEIGHBORHOOD Map

1. Pompano Beach Elementary School
2. Pompano Beach Middle School
3. Blanche Ely High School
4. Pompano Beach Amphitheater
5. Pompano Community Park
6. Pompano Beach Air Park

7. Pompano Beach Golf Shop
8. Mitchell Moore Park
9. Pompano Beach Pier
10. Pompano Citi Centre Mall
11. Harrah's Pompano Beach Casino



**D·R·HORTON**  
*America's Builder*

  
**Highland Oaks**

**INCLUDED**  
Features

### **Architectural Artistry**

- Reinforced concrete monolithic foundation slab
- Masonry exterior walls
- Professionally engineered roof with hurricane clips and bracing
- IKO dimensional roof shingles
- Architecturally designed exterior elevations available
- Fully sodded homesites with professionally designed landscaping
- Gutters in front area of driveway, entry walkway (per plan)
- Hunter® automatic irrigation system
- Paver entry walkway, driveway and patio (per plan)
- Therma Tru® insulated fiberglass front door
- Hurricane storm panels
- Exterior weather proof outlets (G.F.I.)
- Exterior hose bib connection

### **Heart of the Home**

- Knockdown textured finish on walls and ceilings
- Jeld-Wen® 2-panel interior doors
- Maxim® light fixtures
- Kwikset® keyed entry handleset
- Vinyl-coated ventilated shelving in all closets
- Daltile® 18" x 18" ceramic tile flooring in all first floor living areas (excluding bedrooms)
- Mohawk® luxurious wall-to-wall carpeting (installed over dense padding)
- Sherwin Williams® bright white interior paint

### **A Gourmet's Delight**

- Whirlpool® stainless steel appliances:
  - 20 cu. ft. refrigerator
  - Range oven with microwave above
  - Built-in dishwasher
- Moen® single lever faucet
- Moen® garbage disposal
- Stainless steel sink
- Quality crafted custom designed cabinets with 30" uppers
- Puck lights in the kitchen

### **Thoughtful Details**

- Uponor PEX® plumbing water lines
- Tankless water heater
- Interior washer/dryer hook-up
- R-30 blown insulation in all attic spaces above living areas
- R-11 BATT insulation between interior wall and garage wall (per plan)
- R-4.1 insulated exterior masonry walls
- Energy efficient central A/C and heating system

### **Bathroom Conveniences**

- Adult-height custom designed cabinets
- Full vanity mirrors
- Daltile® 12" x 12" ceramic tile floors & shower walls
- Elongated commodes throughout
- Moen® bathroom faucets throughout
- Broan® exhaust fans

### **Technology Standard Features**

- Square D® surge protection on all major appliances
- Pre-wired for ceiling fans with switches in all bedrooms and great room or living room
- High speed structured wiring for 4-line phone, video and computer Includes CAT-5 data lines and RG-6 quad shield coaxial cable (per plan)
- BRK® electrical smoke detectors with battery back-up
- BRK® carbon monoxide detector
- Deako® switches
- Square D® electrical panel with circuit breakers

### **Home Is® Connected**

- Qolysys IQ Panel II 7" HD Touchscreen with built-in 5MP camera
- ADC 750 WiFi video doorbell
- Echo Pop™ with Alexa
- Z Wave™ Thermostat
- Z Wave™ Light Switch
- Z Wave™ Door Lock
- Wi-Fi enabled garage door opener with two transmitters (per plan)
- Security System w/ one motion detector and two door contacts

### **D.R. Horton's Personal Touch**

- Personalized New Homeowner Orientation
- D.R. Horton 1-Year Warranty
- 10-Year RWC™ warranty to protect your investment
- 10-Year Carrier® limited warranty
- 3rd party home inspections

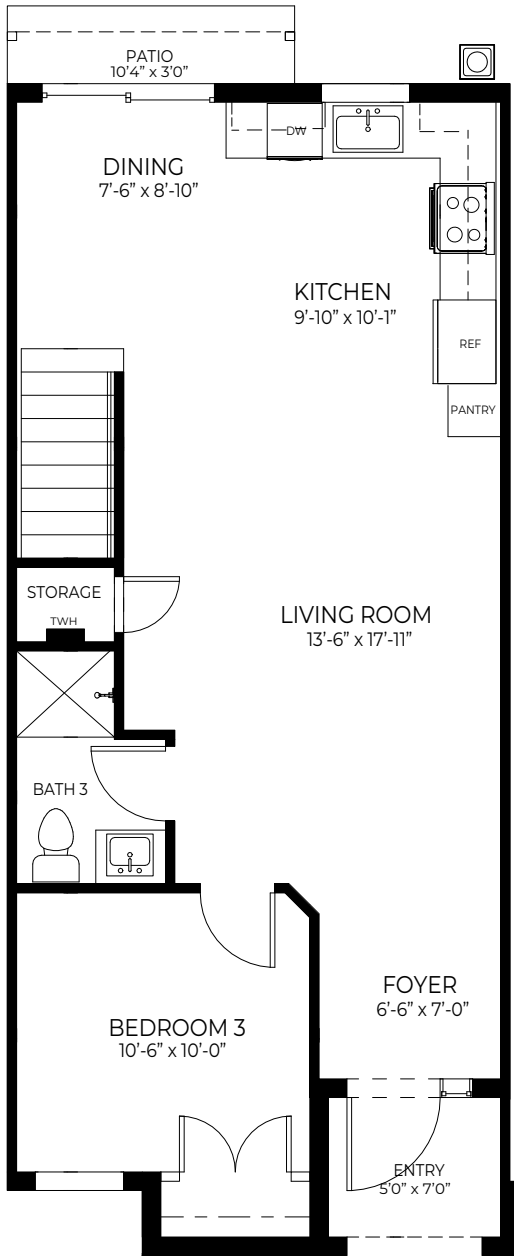




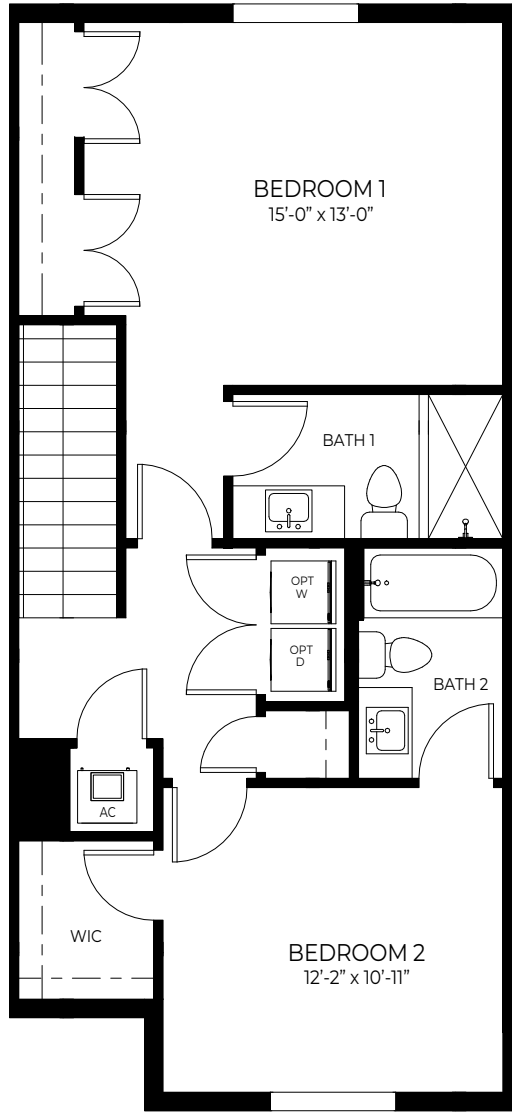
**D·R·HORTON**  
*America's Builder*

  
**Highland Oaks**

FLOORPLANS



FIRST FLOOR



SECOND FLOOR

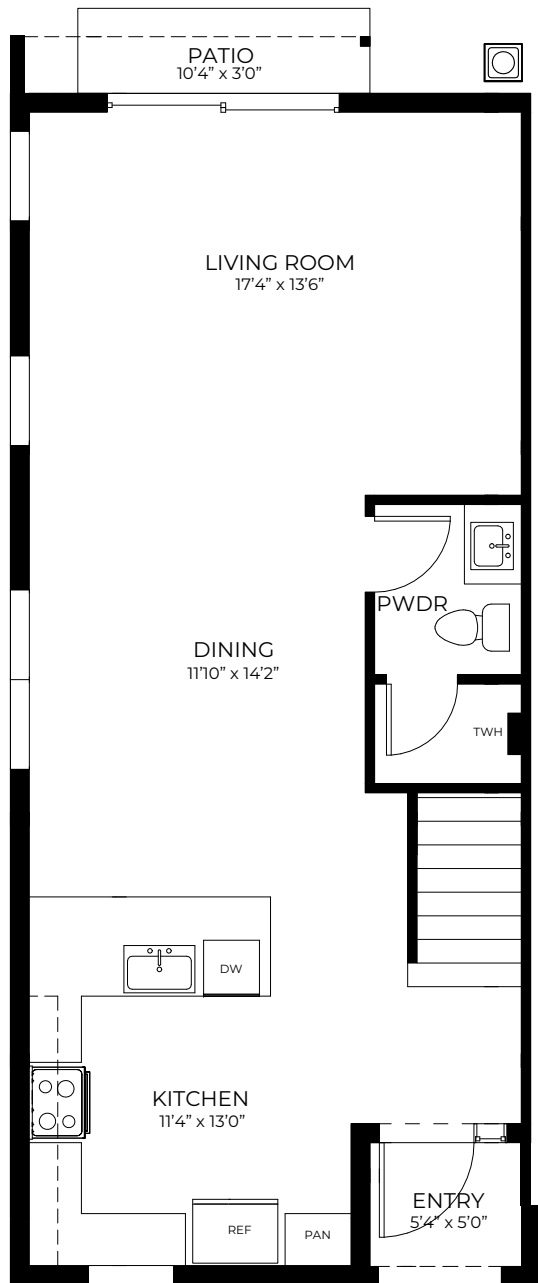


# BUTTERFLY

3 Bedrooms  
3 Bathrooms

1st Floor A/C Sq. Ft.....	708
2nd Floor A/C Sq. Ft.....	662
<b>Total A/C Sq. Ft.....</b>	<b>1,370</b>
Entry.....	35
Patio.....	21
<b>Total Sq. Ft.....</b>	<b>1,426</b>





FIRST FLOOR



SECOND FLOOR



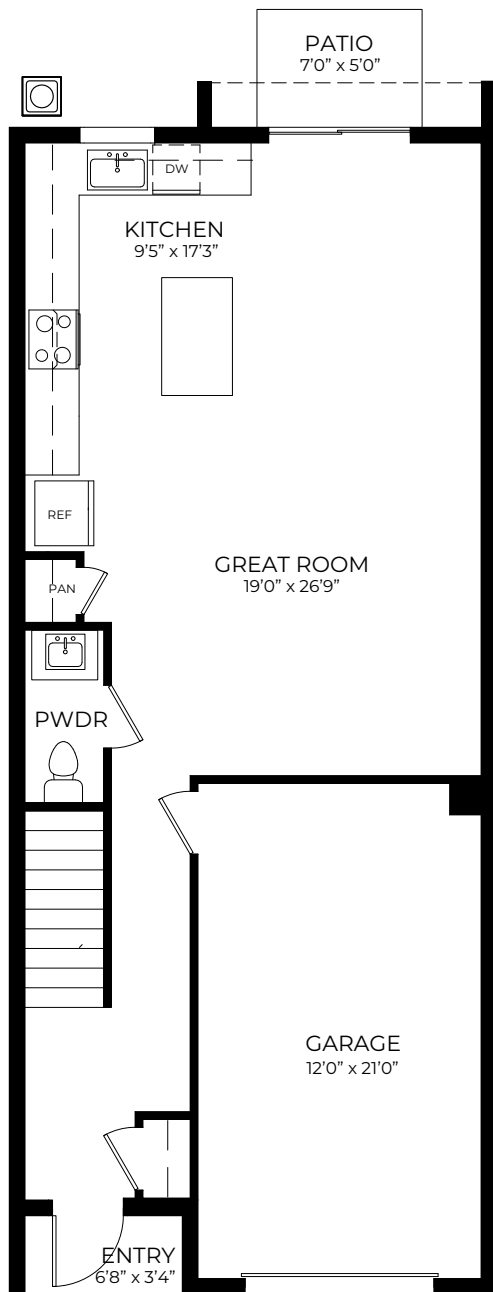
## HILLSBORO

3 Bedrooms  
2.5 Bathrooms

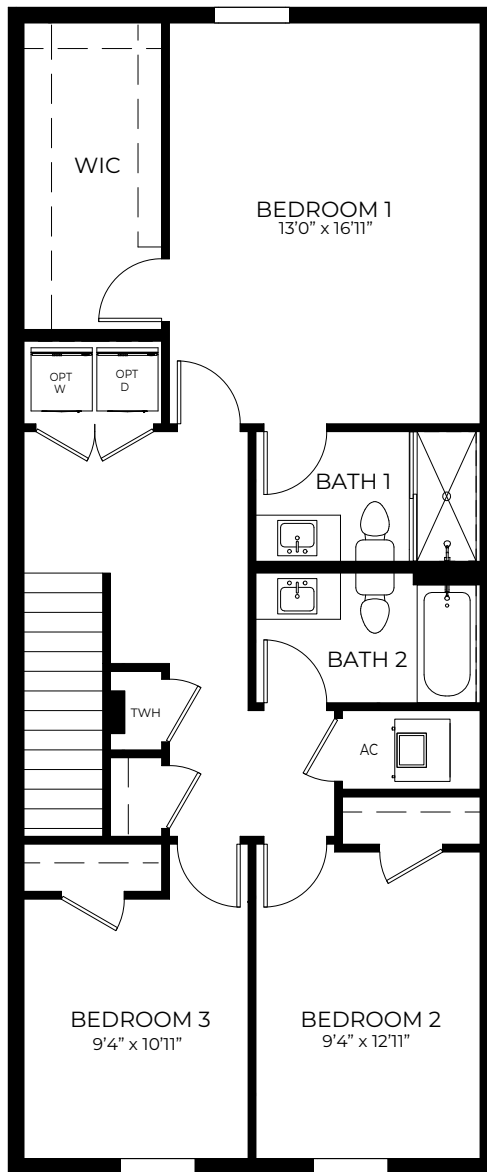
1st Floor A/C Sq. Ft.....	743
2nd Floor A/C Sq. Ft.....	713
<b>Total A/C Sq. Ft.....</b>	<b>1,456</b>
Entry.....	27
Patio.....	24
<b>Total Sq. Ft.....</b>	<b>1,507</b>







FIRST FLOOR



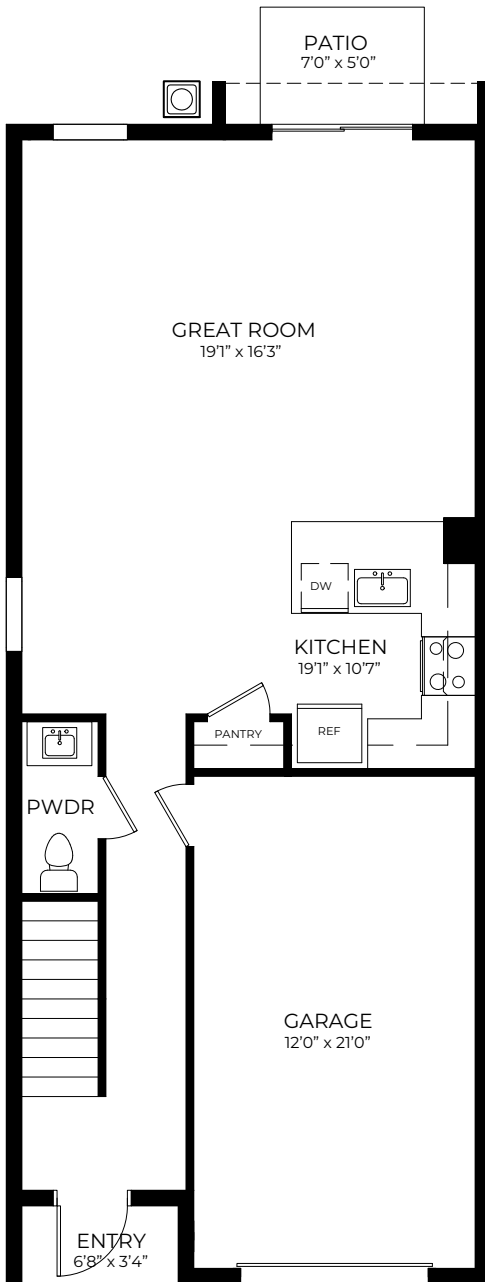
SECOND FLOOR



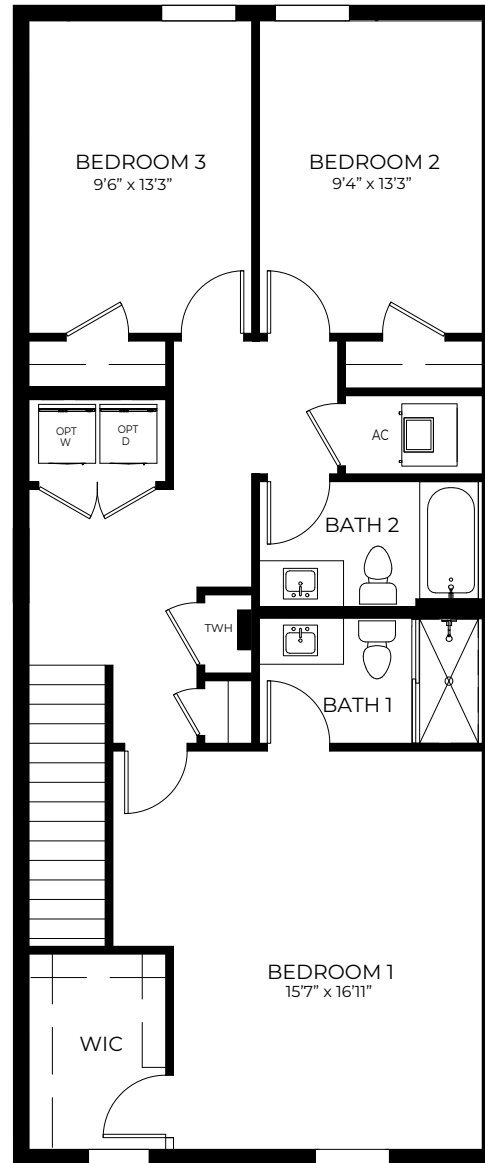
## SEMINOLE

3 Bedrooms  
2.5 Bathrooms  
1-Car Garage

1st Floor A/C Sq. Ft.....	697
2nd Floor A/C Sq. Ft.....	949
<b>Total A/C Sq. Ft.....</b>	<b>1,646</b>
Garage.....	269
Entry.....	24
Patio.....	35
<b>Total Sq. Ft.....</b>	<b>1,974</b>



FIRST FLOOR



SECOND FLOOR



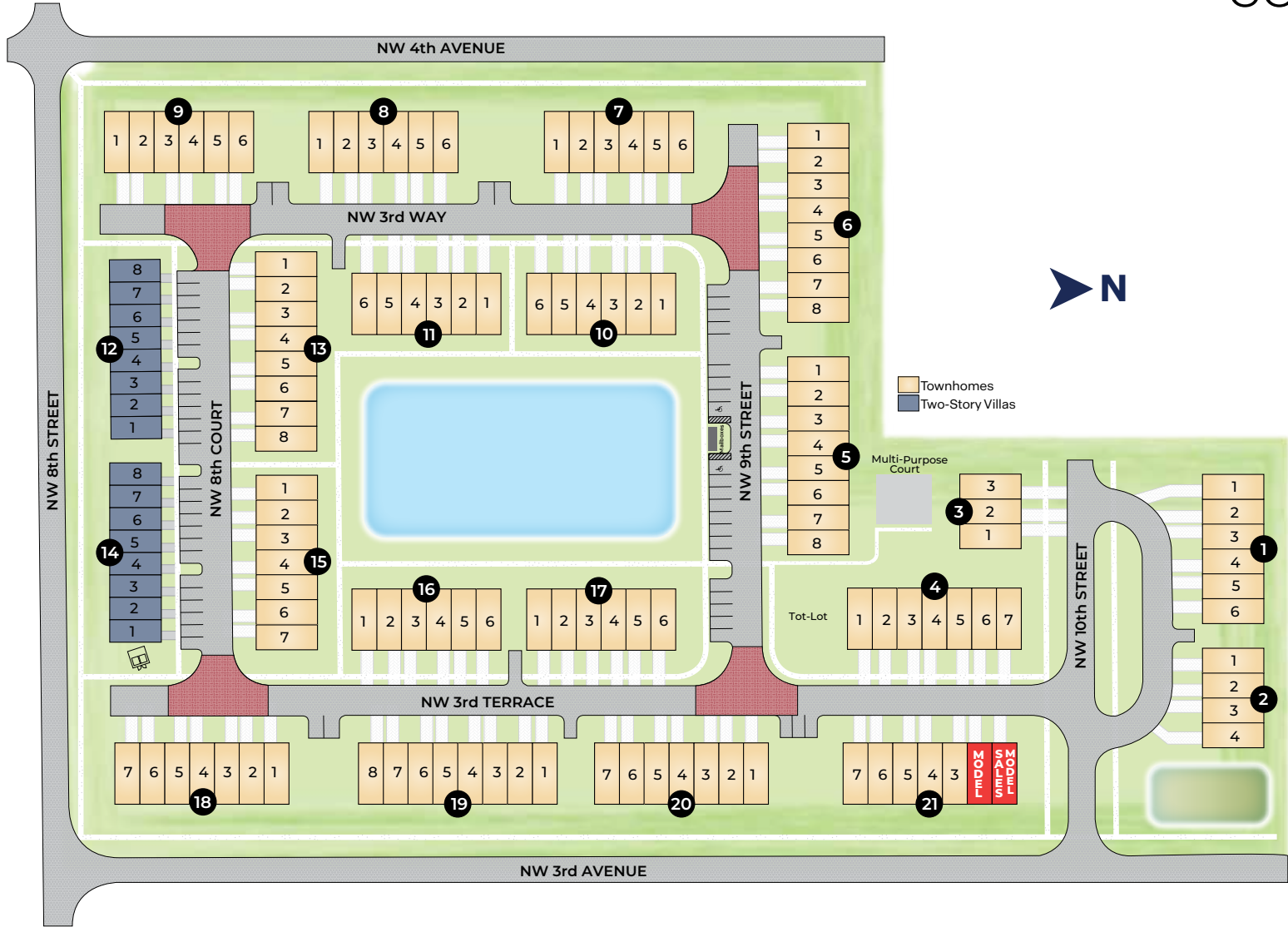
## WATERWAY

3 Bedrooms  
2.5 Bathrooms  
1-Car Garage

1st Floor A/C Sq. Ft.....	713
2nd Floor A/C Sq. Ft.....	1,006
<b>Total A/C Sq. Ft.....</b>	<b>1,719</b>
Garage.....	269
Entry.....	24
Patio.....	35
<b>Total Sq. Ft.....</b>	<b>2,047</b>



# COMMUNITY Siteplan



998 NW 3rd Terrace, Pompano Beach, FL 33060

*Selling By Appointment Only*

954.715.2641 • drhorton.com

D.R. Horton is equal housing opportunity builder. Home and community information, including pricing, included features, terms, availability and amenities, are subject to change and prior sale at any time without notice or obligation. Pictures, photographs, features, colors, drawings, floor plans, square footages and sizes are approximate for illustration purposes only and will vary from the homes as built. All drawings are the artist's concept. Buyer should conduct his or her own investigation of the present and future availability of school districts and school assignments. D.R. Horton has no control or responsibility for any changes to school districts or school assignments should they occur in the future. Home Is Connected, A smart home is a convenient home setup where appliances and devices can be automatically controlled remotely from any internet-connected place using a mobile or other networked device. Certified General Contractor License Number CGC05939