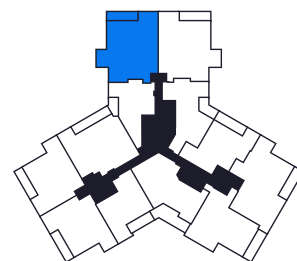


TOWER II

3 BED / 3 BATH

AIR CONDITIONED: 1,964 SQ. FT.
 TERRACE: 169 SQ. FT.
TOTAL LIVING SPACE: 2,133 SQ. FT.
198 SQ. MT.



There are various methods for calculating the total square footage of a condominium unit, and depending on the method of calculation, the quoted square footage of a condominium unit may vary by more than a nominal amount. The dimensions as shown are measured to the exterior boundaries of the exterior walls and the centerline of interior demising walls and, in fact, are larger than the dimensions of the "Unit" as defined in the Declaration of Condominium for each tower of Marina Pointe which is measured using interior measurements.

NICE GRANDE

FLOOR 5

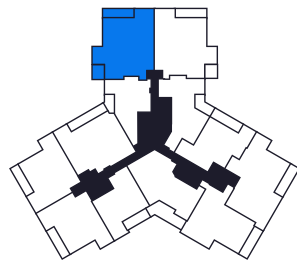


3 BED / 3 BATH

AIR CONDITIONED: 2,014 SQ. FT.

TERRACE: 265 SQ. FT.

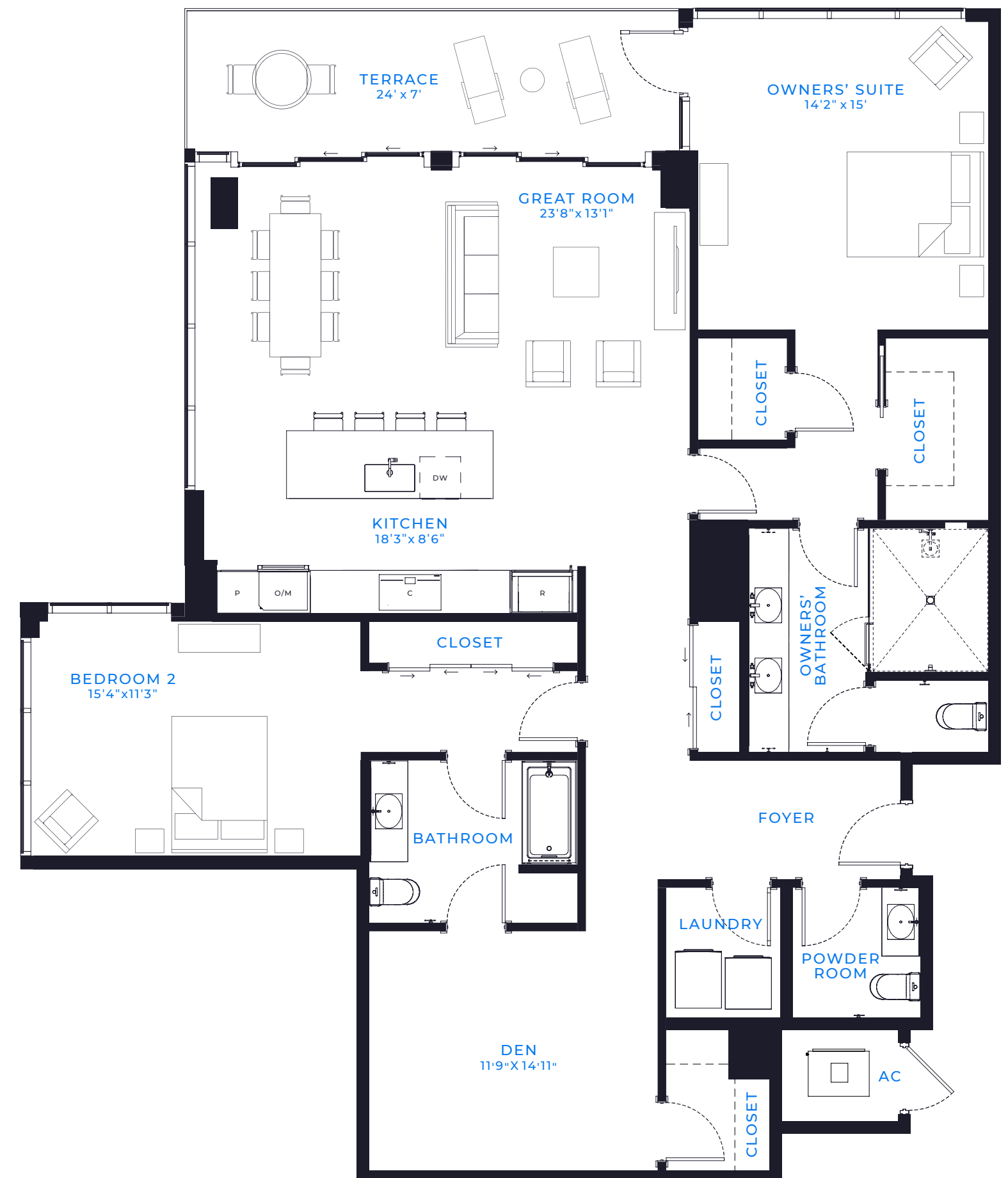
TOTAL LIVING SPACE: 2,279 SQ. FT.
211 SQ. MT.



There are various methods for calculating the total square footage of a condominium unit, and depending on the method of calculation, the quoted square footage of a condominium unit may vary by more than a nominal amount. The dimensions as shown are measured to the exterior boundaries of the exterior walls and the centerline of interior demising walls and, in fact, are larger than the dimensions of the "Unit" as defined in the Declaration of Condominium for each tower of Marina Pointe which is measured using interior measurements.

NICE SALON

FLOORS 2 - 4

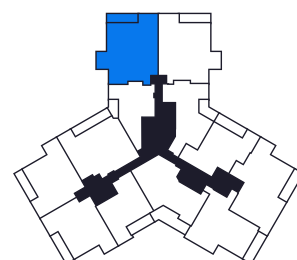


2 BED / 2.5 BATH + DEN

AIR CONDITIONED: 2,013 SQ. FT.

TERRACE: 292 SQ. FT.

TOTAL LIVING SPACE: 2,305 SQ. FT.
214 SQ. MT.



There are various methods for calculating the total square footage of a condominium unit, and depending on the method of calculation, the quoted square footage of a condominium unit may vary by more than a nominal amount. The dimensions as shown are measured to the exterior boundaries of the exterior walls and the centerline of interior demising walls and, in fact, are larger than the dimensions of the "Unit" as defined in the Declaration of Condominium for each tower of Marina Pointe which is measured using interior measurements.

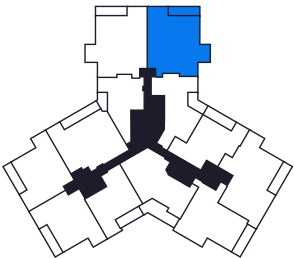
MONACO

FLOORS 6 -16



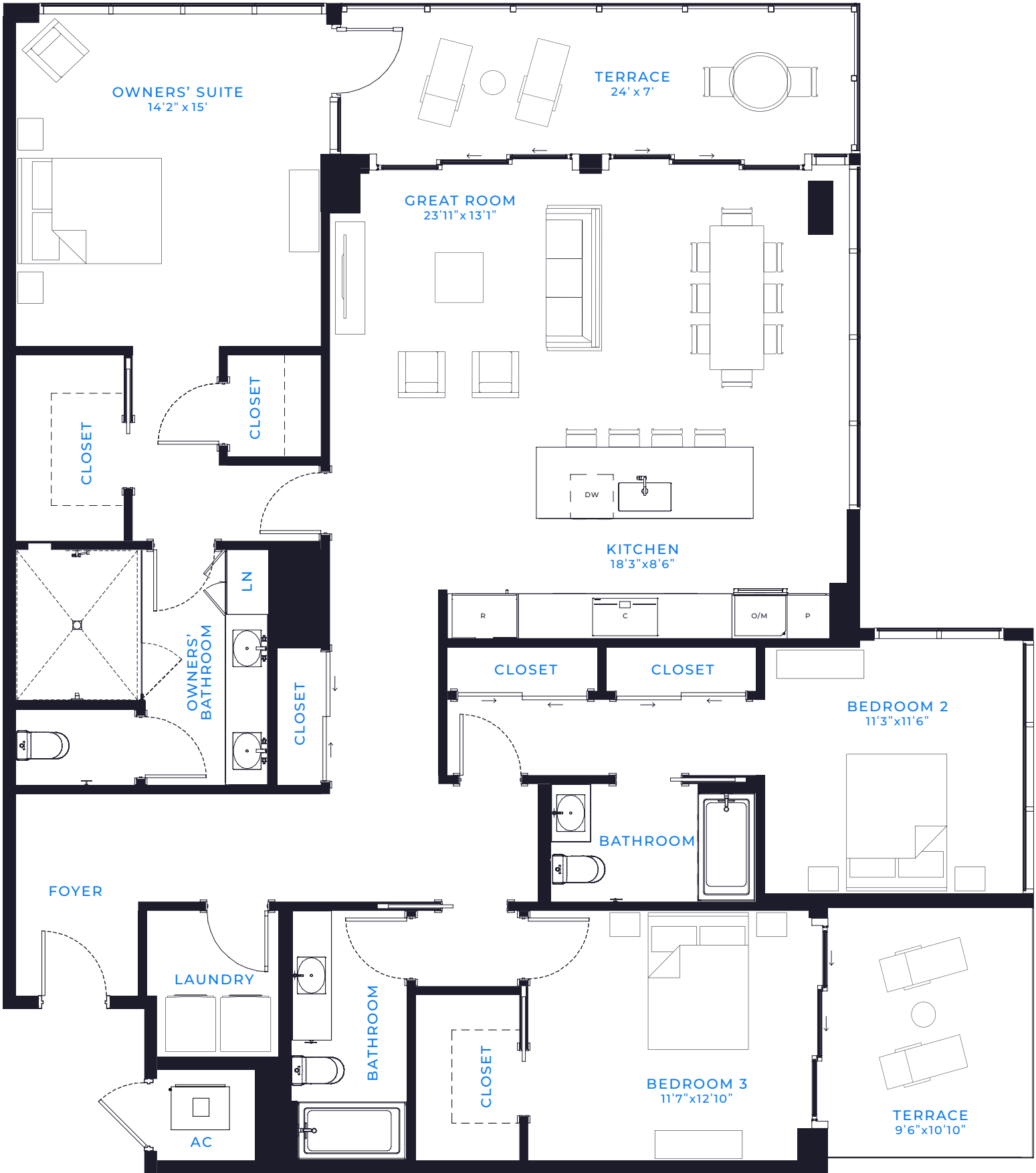
3 BED / 3 BATH

AIR CONDITIONED: 1,964 SQ. FT.
TERRACE: 169 SQ. FT.
TOTAL LIVING SPACE: 2,133 SQ. FT.
198 SQ. MT.



There are various methods for calculating the total square footage of a condominium unit, and depending on the method of calculation, the quoted square footage of a condominium unit may vary by more than a nominal amount. The dimensions as shown are measured to the exterior boundaries of the exterior walls and the centerline of interior demising walls and, in fact, are larger than the dimensions of the "Unit" as defined in the Declaration of Condominium for each tower of Marina Pointe which is measured using interior measurements.

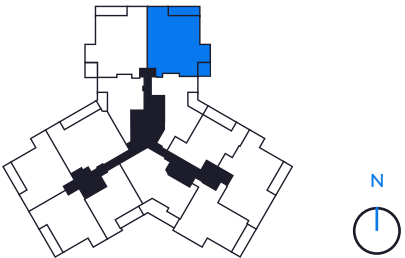
MONACO GRANDE



There are various methods for calculating the total square footage of a condominium unit, and depending on the method of calculation, the quoted square footage of a condominium unit may vary by more than a nominal amount. The dimensions as shown are measured to the exterior boundaries of the exterior walls and the centerline of interior demising walls and, in fact, are larger than the dimensions of the "Unit" as defined in the Declaration of Condominium for each tower of Marina Pointe which is measured using interior measurements.

3 BED / 3 BATH

AIR CONDITIONED: 2,014 SQ. FT.
TERRACE: 265 SQ. FT.
TOTAL LIVING SPACE: 2,279 SQ. FT.
211 SQ. MT.

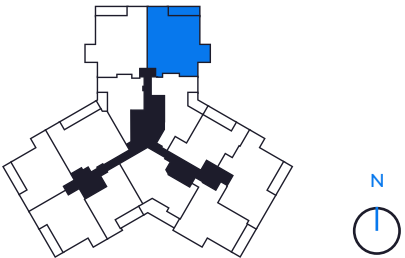


MONACO SALON

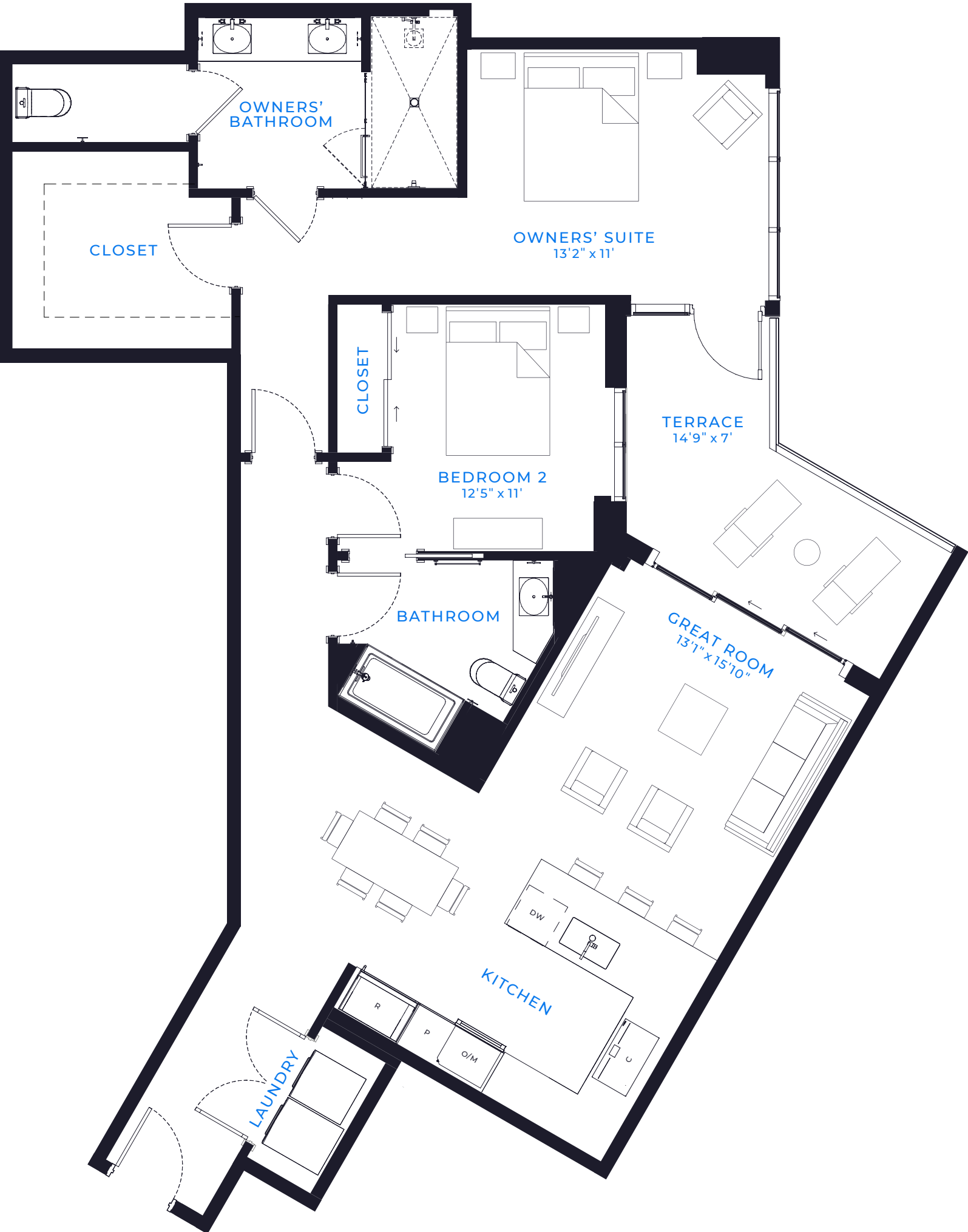


2 BED / 2.5 BATH + DEN

AIR CONDITIONED: 2,013 SQ. FT.
TERRACE: 292 SQ. FT.
TOTAL LIVING SPACE: 2,305 SQ. FT.
214 SQ. MT.

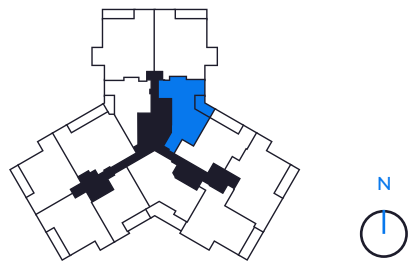


There are various methods for calculating the total square footage of a condominium unit, and depending on the method of calculation, the quoted square footage of a condominium unit may vary by more than a nominal amount. The dimensions as shown are measured to the exterior boundaries of the exterior walls and the centerline of interior demising walls and, in fact, are larger than the dimensions of the "Unit" as defined in the Declaration of Condominium for each tower of Marina Pointe which is measured using interior measurements.



2 BED / 2 BATH

AIR CONDITIONED:	1,344 SQ. FT.
TERRACE:	134 SQ. FT.
TOTAL LIVING SPACE:	1,478 SQ. FT.
	137 SQ. MT.



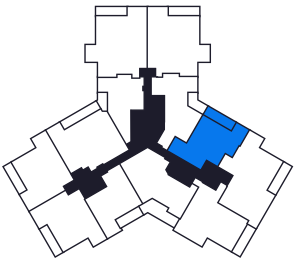
There are various methods for calculating the total square footage of a condominium unit, and depending on the method of calculation, the quoted square footage of a condominium unit may vary by more than a nominal amount. The dimensions as shown are measured to the exterior boundaries of the exterior walls and the centerline of interior demising walls and, in fact, are larger than the dimensions of the "Unit" as defined in the Declaration of Condominium for each tower of Marina Pointe which is measured using interior measurements.



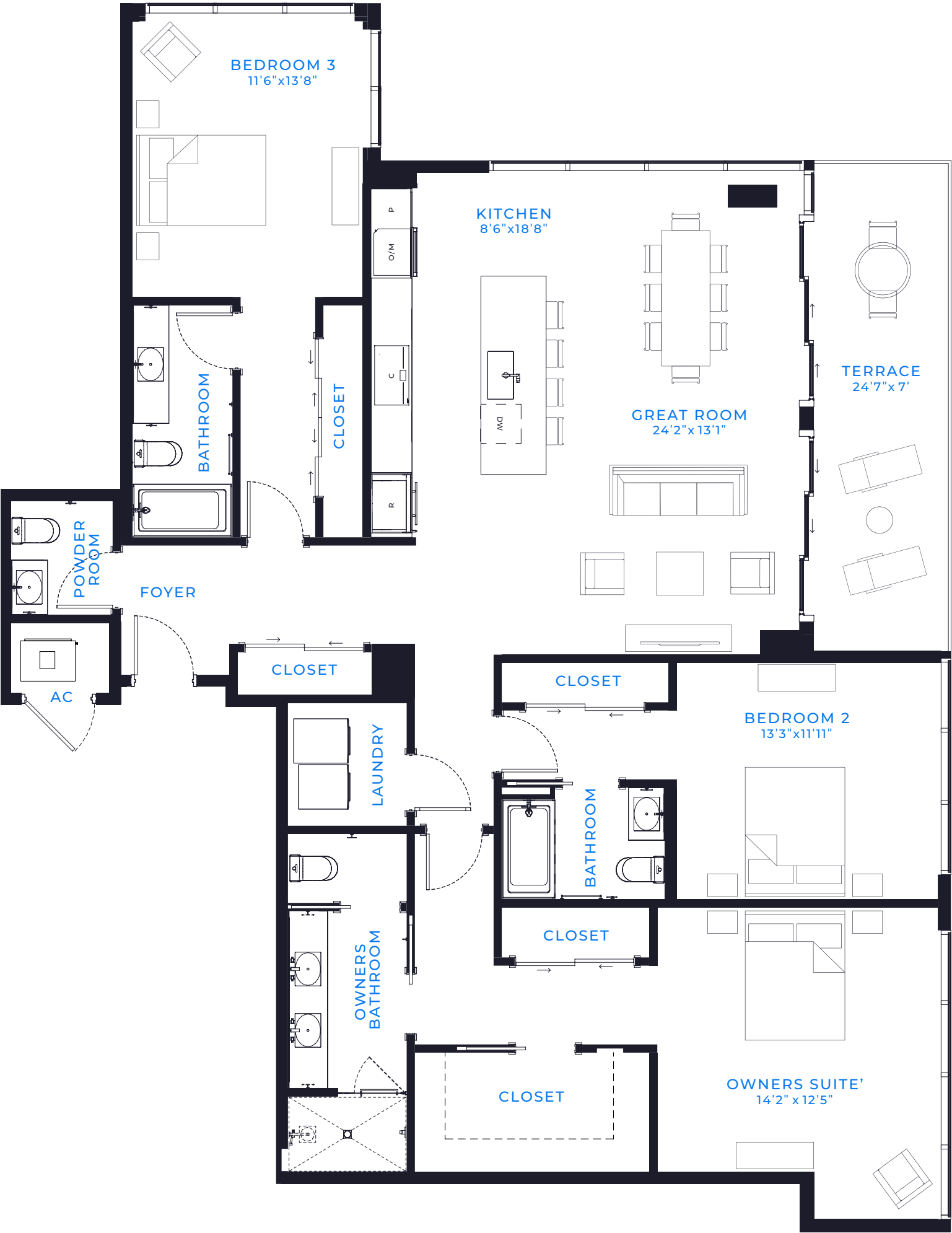
There are various methods for calculating the total square footage of a condominium unit, and depending on the method of calculation, the quoted square footage of a condominium unit may vary by more than a nominal amount. The dimensions as shown are measured to the exterior boundaries of the exterior walls and the centerline of interior demising walls and, in fact, are larger than the dimensions of the "Unit" as defined in the Declaration of Condominium for each tower of Marina Pointe which is measured using interior measurements.

2 BED / 2 BATH

AIR CONDITIONED: 1,311 SQ. FT.
TERRACE: 170 SQ. FT.
TOTAL LIVING SPACE: 1,481 SQ. FT.
137 SQ. MT.



MONTPELIER



There are various methods for calculating the total square footage of a condominium unit, and depending on the method of calculation, the quoted square footage of a condominium unit may vary by more than a nominal amount. The dimensions as shown are measured to the exterior boundaries of the exterior walls and the centerline of interior demising walls and, in fact, are larger than the dimensions of the "Unit" as defined in the Declaration of Condominium for each tower of Marina Pointe which is measured using interior measurements.

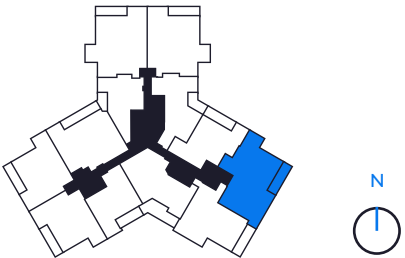
3 BED / 3.5 BATH

AIR CONDITIONED:2,006 SQ. FT.

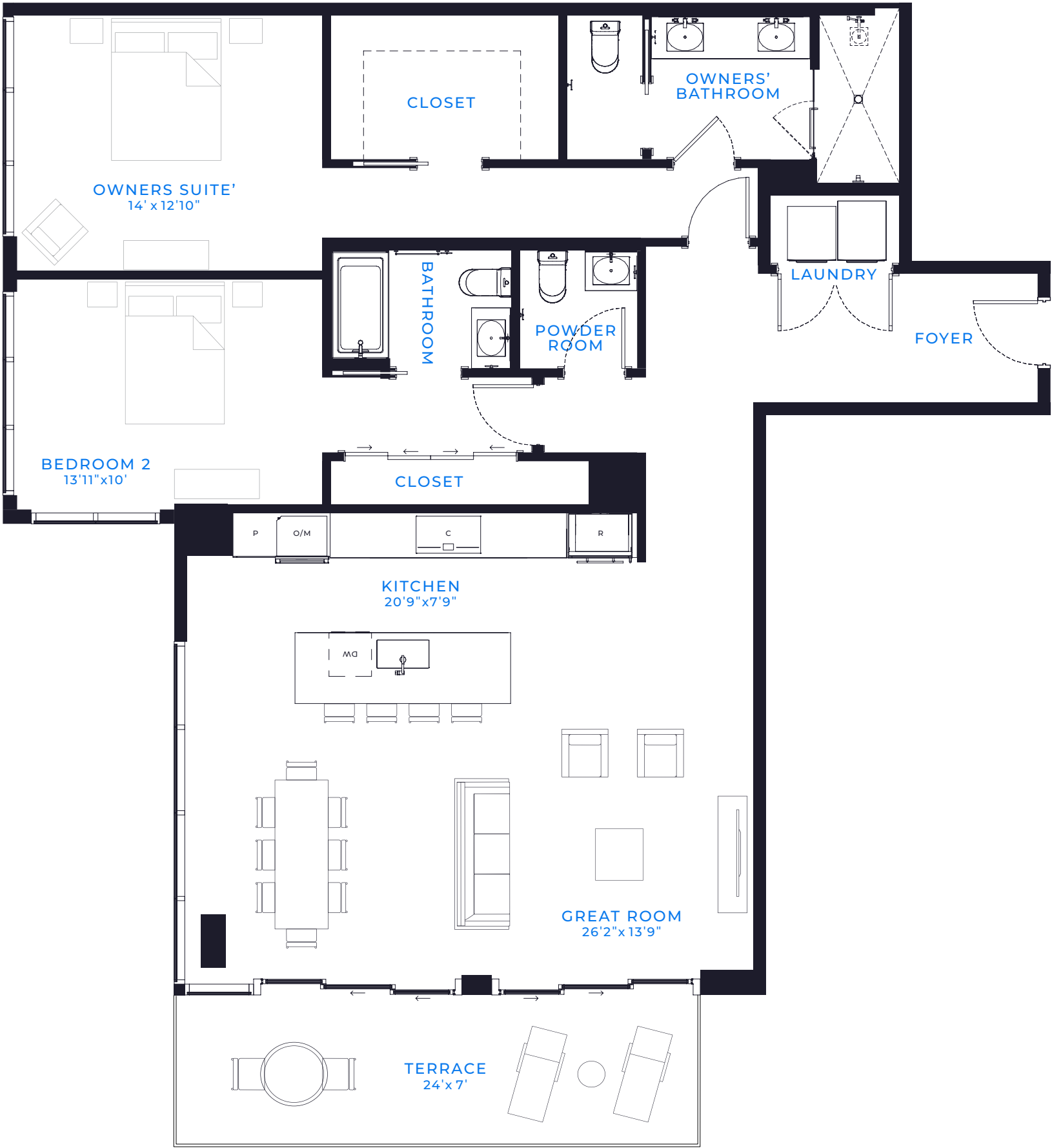
TERRACE:171 SQ. FT.

TOTAL LIVING SPACE:2,177 SQ. FT.

202 SQ. MT.



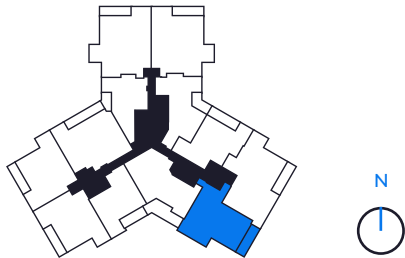
MARSEILLE



There are various methods for calculating the total square footage of a condominium unit, and depending on the method of calculation, the quoted square footage of a condominium unit may vary by more than a nominal amount. The dimensions as shown are measured to the exterior boundaries of the exterior walls and the centerline of interior demising walls and, in fact, are larger than the dimensions of the "Unit" as defined in the Declaration of Condominium for each tower of Marina Pointe which is measured using interior measurements.

2 BED / 2.5 BATH

AIR CONDITIONED: 1,690 SQ. FT.
TERRACE: 171 SQ. FT.
TOTAL LIVING SPACE: 1,861 SQ. FT.
173 SQ. MT.

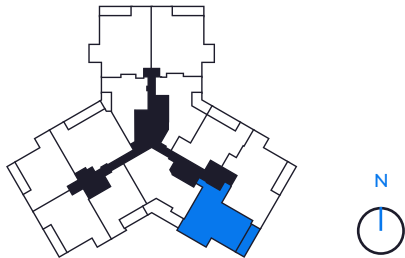


MARSEILLE II



2 BED / 2.5 BATH

AIR CONDITIONED: 1,753 SQ. FT.
TERRACE: 196 SQ. FT.
TOTAL LIVING SPACE: 1,949 SQ. FT.
181 SQ. MT.



There are various methods for calculating the total square footage of a condominium unit, and depending on the method of calculation, the quoted square footage of a condominium unit may vary by more than a nominal amount. The dimensions as shown are measured to the exterior boundaries of the exterior walls and the centerline of interior demising walls and, in fact, are larger than the dimensions of the "Unit" as defined in the Declaration of Condominium for each tower of Marina Pointe which is measured using interior measurements.

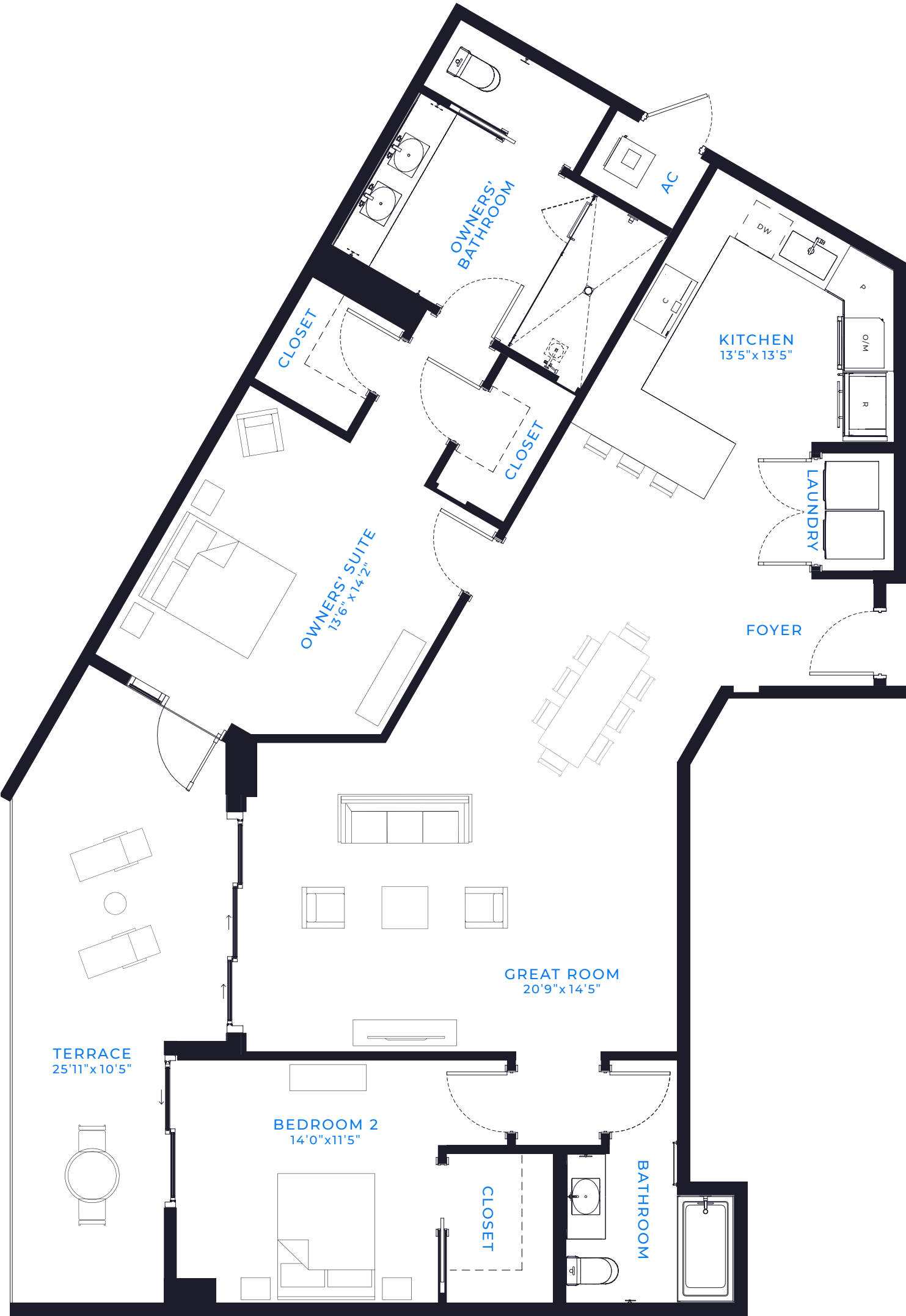
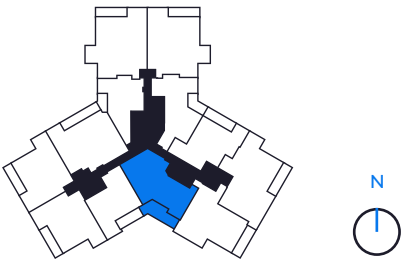
VALENCIA

FLOORS 2 – 16



2 BED / 2 BATH

AIR CONDITIONED: 1,519 SQ. FT.
TERRACE: 251 SQ. FT.
TOTAL LIVING SPACE: 1,682 SQ. FT.
156 SQ. MT.



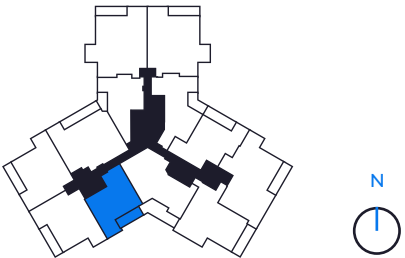
There are various methods for calculating the total square footage of a condominium unit, and depending on the method of calculation, the quoted square footage of a condominium unit may vary by more than a nominal amount. The dimensions as shown are measured to the exterior boundaries of the exterior walls and the centerline of interior demising walls and, in fact, are larger than the dimensions of the "Unit" as defined in the Declaration of Condominium for each tower of Marina Pointe which is measured using interior measurements.

PORTOFINO



2 BED / 2 BATH

AIR CONDITIONED: 1,239 SQ. FT.
TERRACE: 164 SQ. FT.
TOTAL LIVING SPACE: 1,403 SQ. FT.
130 SQ. MT.



There are various methods for calculating the total square footage of a condominium unit, and depending on the method of calculation, the quoted square footage of a condominium unit may vary by more than a nominal amount. The dimensions as shown are measured to the exterior boundaries of the exterior walls and the centerline of interior demising walls and, in fact, are larger than the dimensions of the "Unit" as defined in the Declaration of Condominium for each tower of Marina Pointe which is measured using interior measurements.

CASSIS



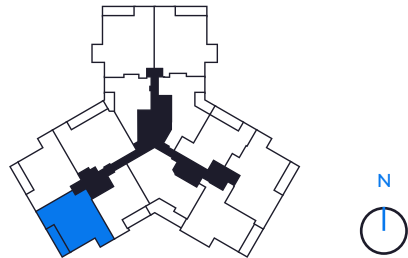
2 BED / 2.5 BATH

AIR CONDITIONED: 1,457 SQ. FT.

TERRACE: 171 SQ. FT.

TOTAL LIVING SPACE: 1,628 SQ. FT.

151 SQ. MT.



There are various methods for calculating the total square footage of a condominium unit, and depending on the method of calculation, the quoted square footage of a condominium unit may vary by more than a nominal amount. The dimensions as shown are measured to the exterior boundaries of the exterior walls and the centerline of interior demising walls and, in fact, are larger than the dimensions of the "Unit" as defined in the Declaration of Condominium for each tower of Marina Pointe which is measured using interior measurements.

CORSICA



There are various methods for calculating the total square footage of a condominium unit, and depending on the method of calculation, the quoted square footage of a condominium unit may vary by more than a nominal amount. The dimensions as shown are measured to the exterior boundaries of the exterior walls and the centerline of interior demising walls and, in fact, are larger than the dimensions of the "Unit" as defined in the Declaration of Condominium for each tower of Marina Pointe which is measured using interior measurements.

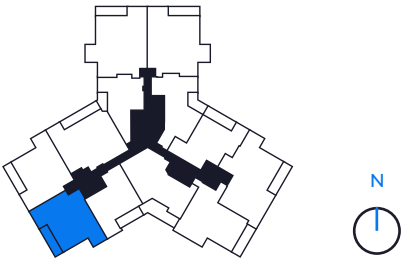
2 BED / 2.5 BATH

AIR CONDITIONED:1,526 SQ. FT.

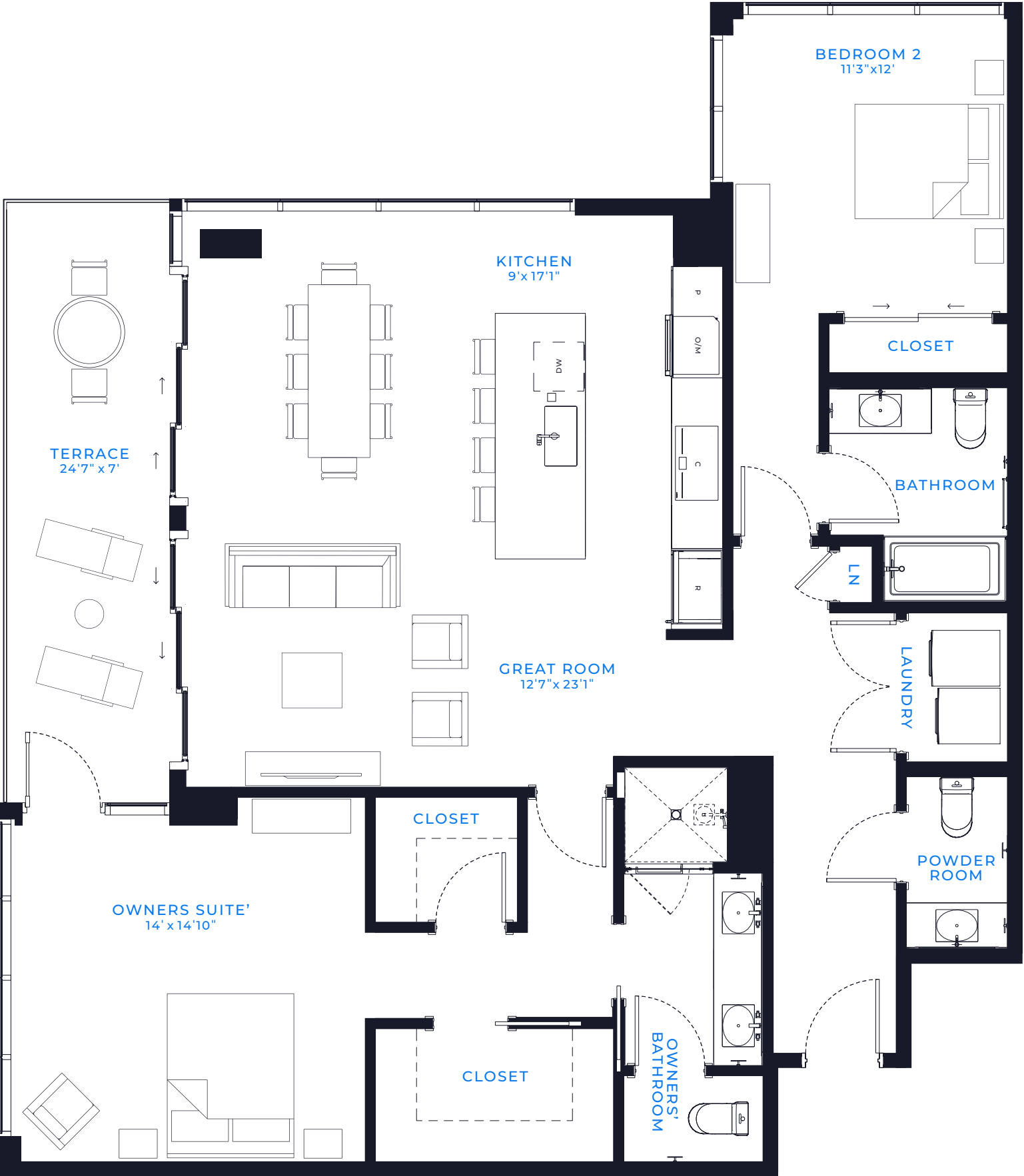
TERRACE:171 SQ. FT.

TOTAL LIVING SPACE:1,697 SQ. FT.

157 SQ. MT.



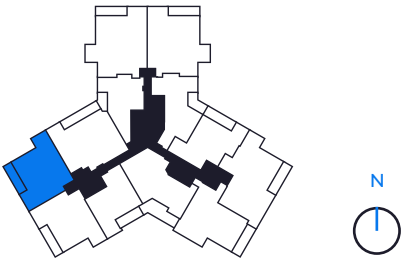
SARDINIA



There are various methods for calculating the total square footage of a condominium unit, and depending on the method of calculation, the quoted square footage of a condominium unit may vary by more than a nominal amount. The dimensions as shown are measured to the exterior boundaries of the exterior walls and the centerline of interior demising walls and, in fact, are larger than the dimensions of the "Unit" as defined in the Declaration of Condominium for each tower of Marina Pointe which is measured using interior measurements.

2 BED / 2.5 BATH

AIR CONDITIONED:	1,526 SQ. FT.
TERRACE:	171 SQ. FT.
TOTAL LIVING SPACE:	1,697 SQ. FT.
	157 SQ. MT.



ST. TROPEZ



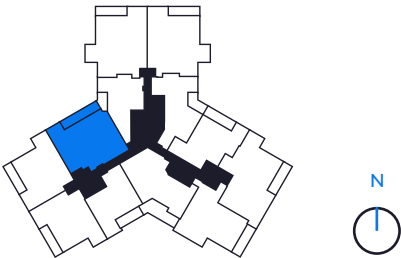
3 BED / 3 BATH + DEN

AIR CONDITIONED:1,792 SQ. FT.

TERRACE:222 SQ. FT.

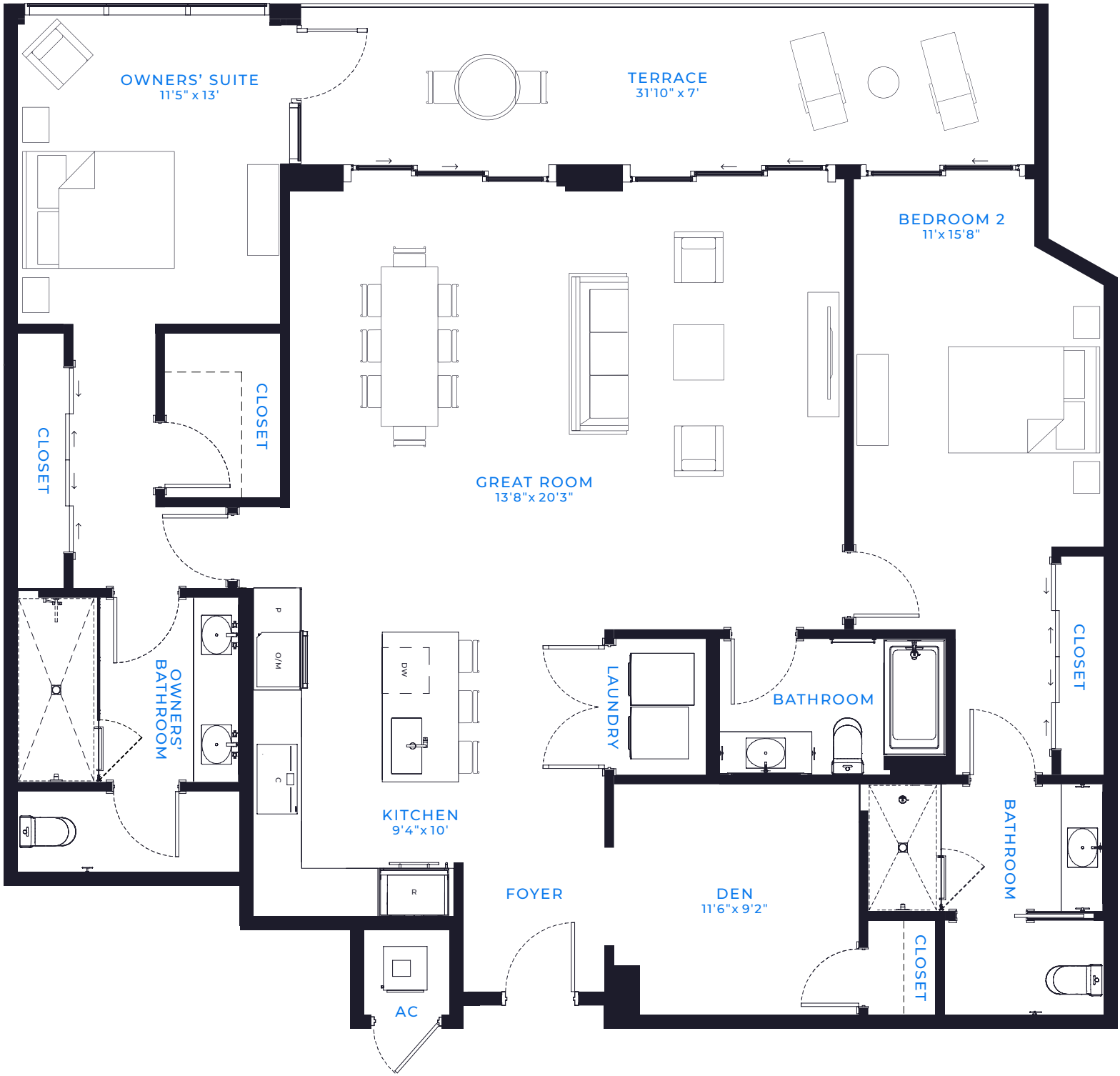
TOTAL LIVING SPACE:2,014 SQ. FT.

187 SQ. MT.



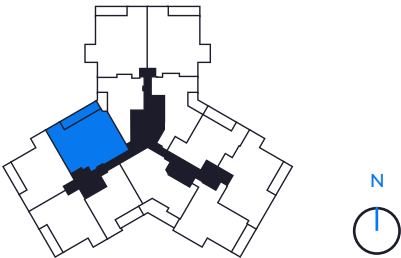
There are various methods for calculating the total square footage of a condominium unit, and depending on the method of calculation, the quoted square footage of a condominium unit may vary by more than a nominal amount. The dimensions as shown are measured to the exterior boundaries of the exterior walls and the centerline of interior demising walls and, in fact, are larger than the dimensions of the "Unit" as defined in the Declaration of Condominium for each tower of Marina Pointe which is measured using interior measurements.

ST. TROPEZ OPEN



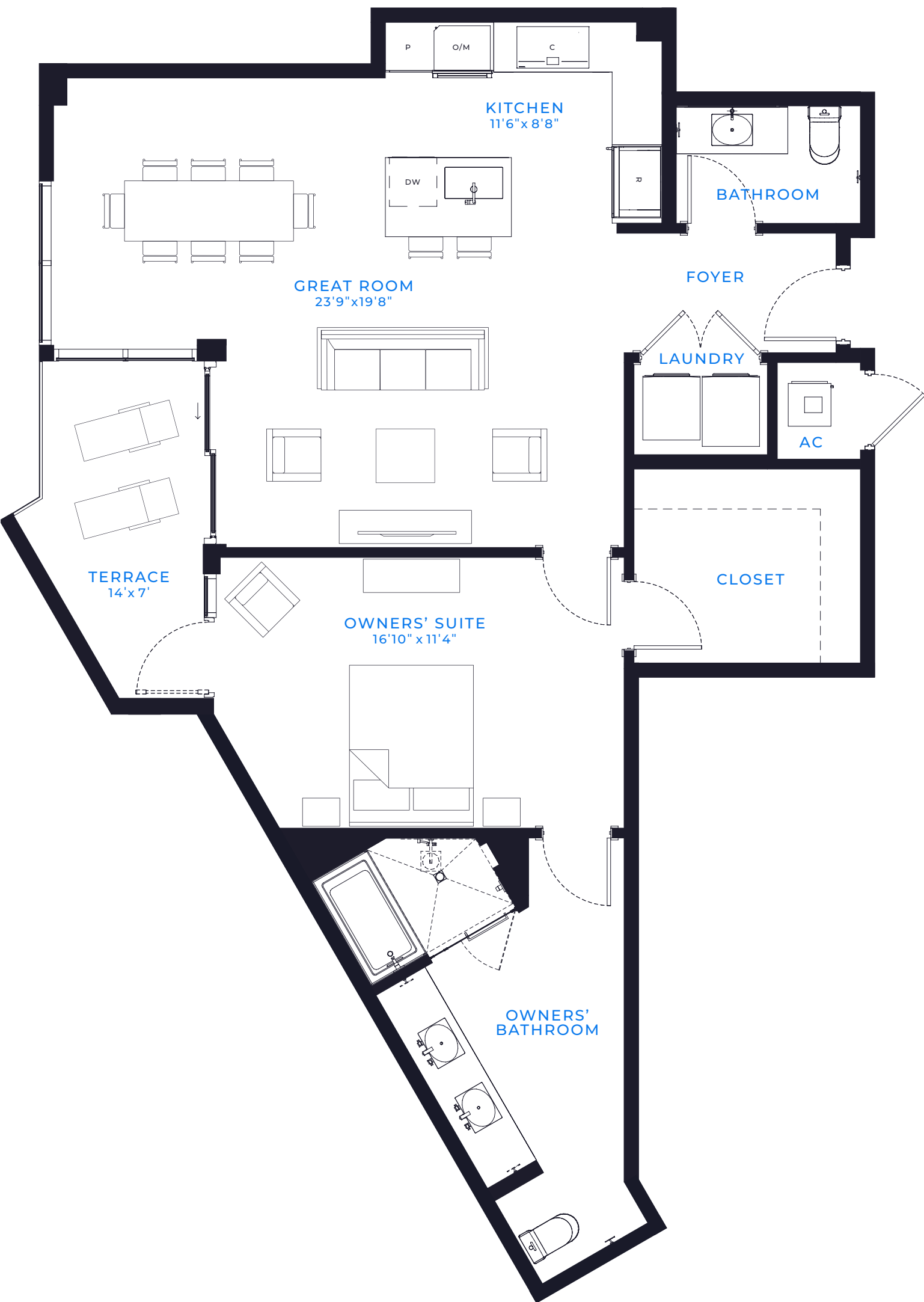
2 BED / 3 BATH + DEN

AIR CONDITIONED: 1,792 SQ. FT.
TERRACE: 222 SQ. FT.
TOTAL LIVING SPACE: 2,014 SQ. FT.
187 SQ. MT.



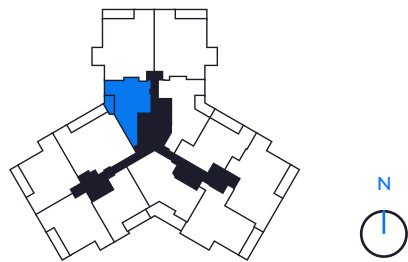
There are various methods for calculating the total square footage of a condominium unit, and depending on the method of calculation, the quoted square footage of a condominium unit may vary by more than a nominal amount. The dimensions as shown are measured to the exterior boundaries of the exterior walls and the centerline of interior demising walls and, in fact, are larger than the dimensions of the "Unit" as defined in the Declaration of Condominium for each tower of Marina Pointe which is measured using interior measurements.

SORRENTO



1 BED / 1.5 BATH

AIR CONDITIONED:	1,101 SQ. FT.
TERRACE:	92 SQ. FT.
TOTAL LIVING SPACE:	1,193 SQ. FT.
	111 SQ. MT.



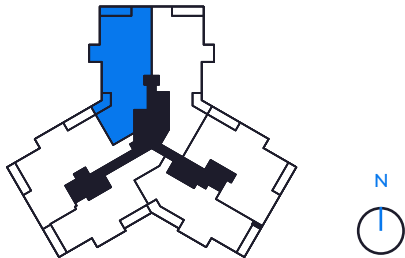
There are various methods for calculating the total square footage of a condominium unit, and depending on the method of calculation, the quoted square footage of a condominium unit may vary by more than a nominal amount. The dimensions as shown are measured to the exterior boundaries of the exterior walls and the centerline of interior demising walls and, in fact, are larger than the dimensions of the "Unit" as defined in the Declaration of Condominium for each tower of Marina Pointe which is measured using interior measurements.

PENTHOUSE 2A



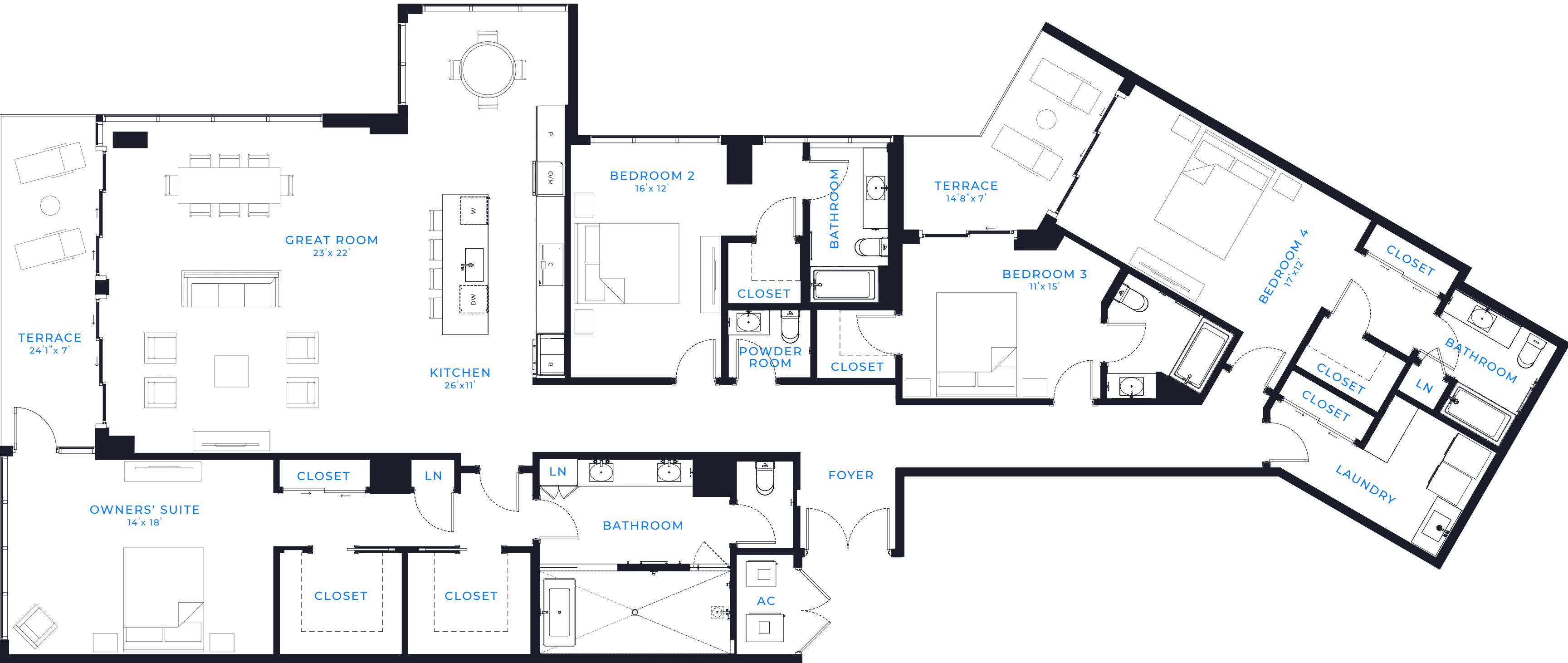
4 BED / 4.5 BATH

AIR CONDITIONED: 3,362 SQ. FT.
TERRACE: 300 SQ. FT.
TOTAL LIVING SPACE: 3,662 SQ. FT.
340 SQ. MT.



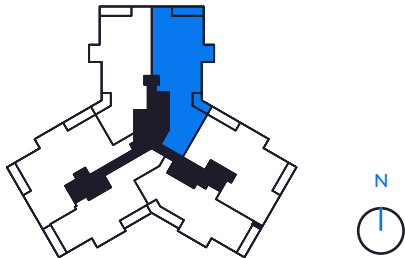
There are various methods for calculating the total square footage of a condominium unit, and depending on the method of calculation, the quoted square footage of a condominium unit may vary by more than a nominal amount. The dimensions as shown are measured to the exterior boundaries of the exterior walls and the centerline of interior demising walls and, in fact, are larger than the dimensions of the "Unit" as defined in the Declaration of Condominium for each tower of Marina Pointe which is measured using interior measurements.

PENTHOUSE 2B



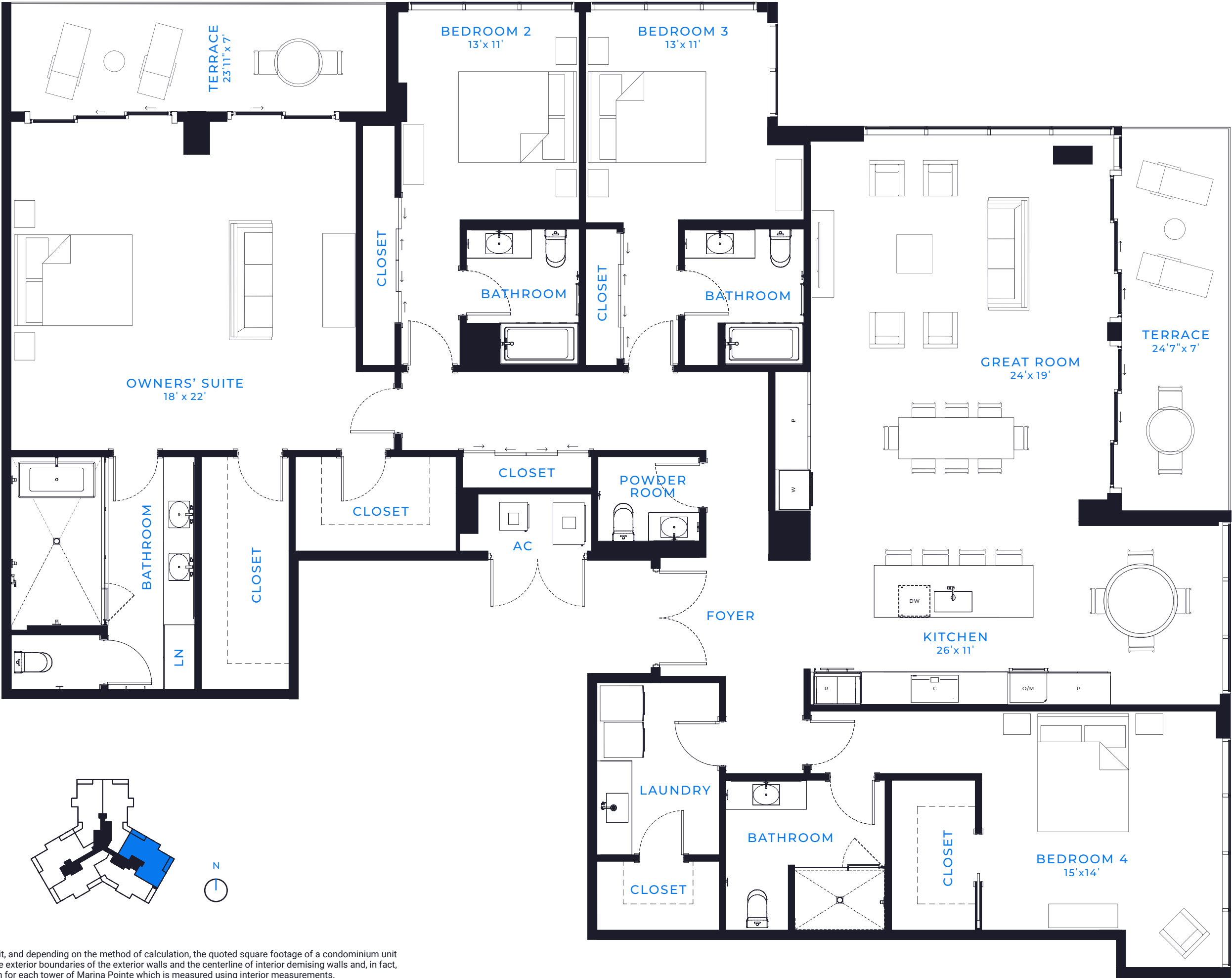
4 BED / 4.5 BATH

AIR CONDITIONED:	3,422 SQ. FT.
TERRACE:	300 SQ. FT.
TOTAL LIVING SPACE:	3,722 SQ. FT.
	345 SQ. MT.



There are various methods for calculating the total square footage of a condominium unit, and depending on the method of calculation, the quoted square footage of a condominium unit may vary by more than a nominal amount. The dimensions as shown are measured to the exterior boundaries of the exterior walls and the centerline of interior demising walls and, in fact, are larger than the dimensions of the "Unit" as defined in the Declaration of Condominium for each tower of Marina Pointe which is measured using interior measurements.

PENTHOUSE 2E

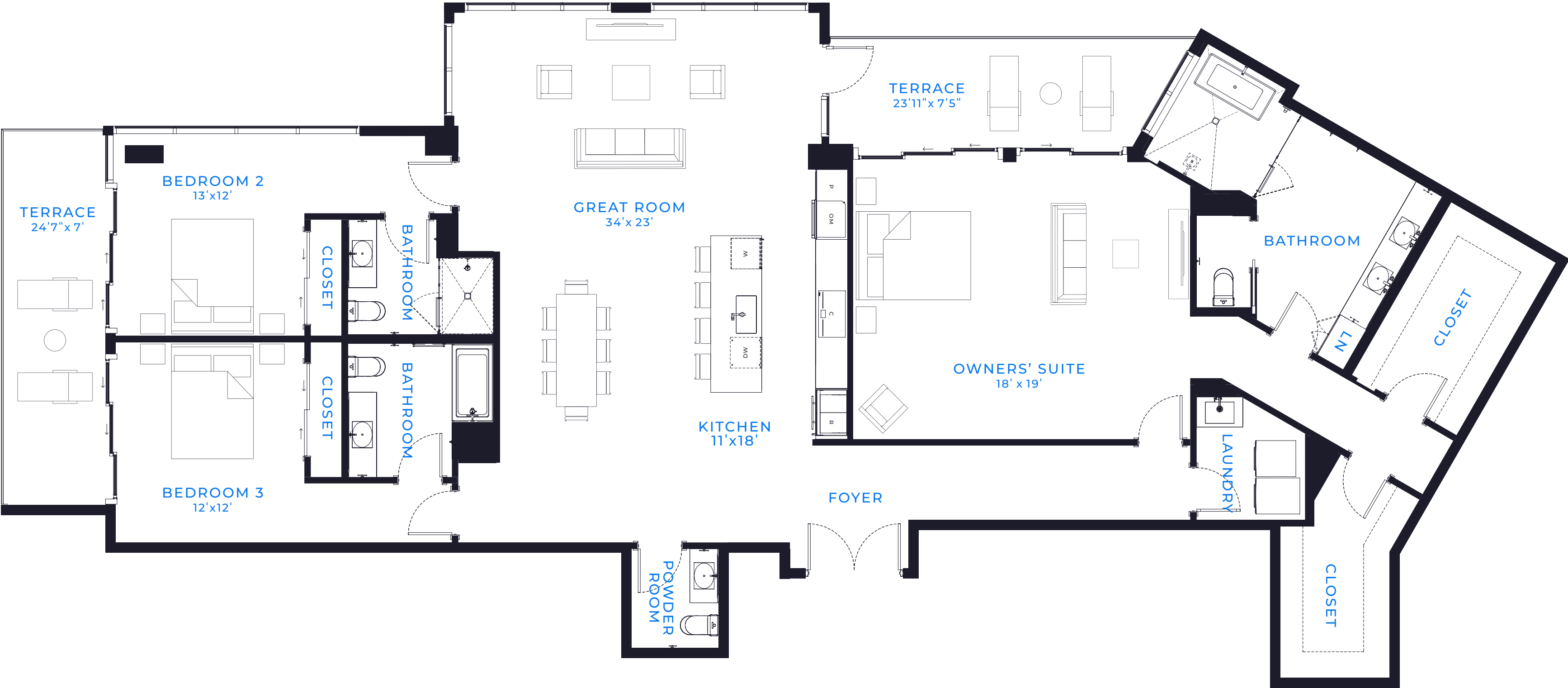


4 BED / 4.5 BATH

AIR CONDITIONED:	3,372 SQ. FT.
TERRACE:	339 SQ. FT.
TOTAL LIVING SPACE:	3,711 SQ. FT.
	344 SQ. MT.

There are various methods for calculating the total square footage of a condominium unit, and depending on the method of calculation, the quoted square footage of a condominium unit may vary by more than a nominal amount. The dimensions as shown are measured to the exterior boundaries of the exterior walls and the centerline of interior demising walls and, in fact, are larger than the dimensions of the "Unit" as defined in the Declaration of Condominium for each tower of Marina Pointe which is measured using interior measurements.

PENTHOUSE 2F



3 BED / 3.5 BATH

AIR CONDITIONED:

2,803 SQ. FT.

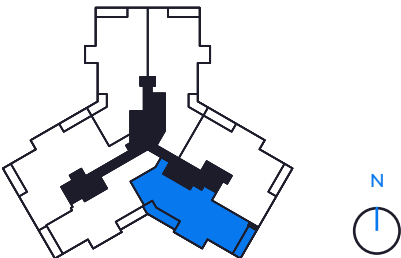
TERRACE:

332 SQ. FT.

TOTAL LIVING SPACE:

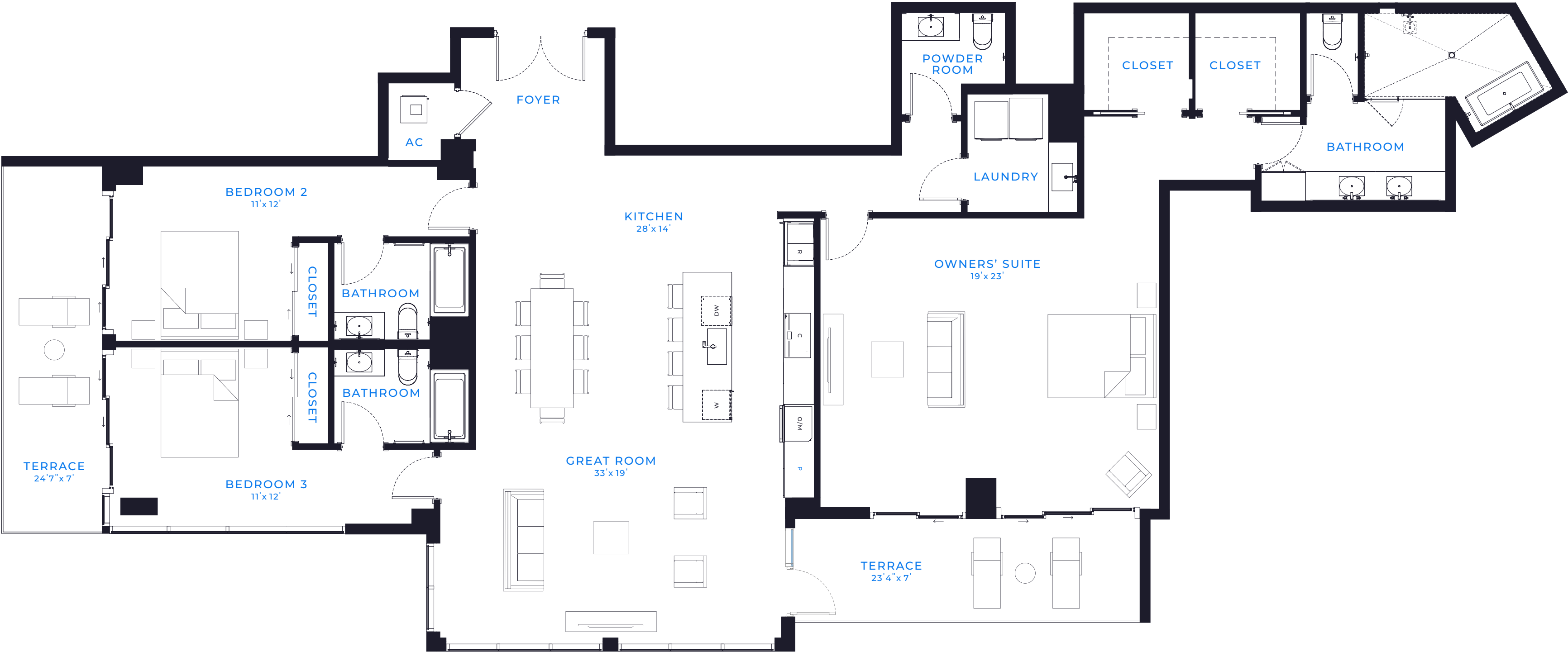
3,135 SQ. FT.

291 SQ. MT.



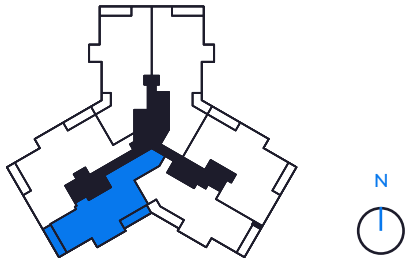
There are various methods for calculating the total square footage of a condominium unit, and depending on the method of calculation, the quoted square footage of a condominium unit may vary by more than a nominal amount. The dimensions as shown are measured to the exterior boundaries of the exterior walls and the centerline of interior demising walls and, in fact, are larger than the dimensions of the "Unit" as defined in the Declaration of Condominium for each tower of Marina Pointe which is measured using interior measurements.

PENTHOUSE 21



3 BED / 3.5 BATH

AIR CONDITIONED:	2,680 SQ. FT.
TERRACE:	337 SQ. FT.
TOTAL LIVING SPACE:	2,840 SQ. FT.
	264 SQ. MT.



There are various methods for calculating the total square footage of a condominium unit, and depending on the method of calculation, the quoted square footage of a condominium unit may vary by more than a nominal amount. The dimensions as shown are measured to the exterior boundaries of the exterior walls and the centerline of interior demising walls and, in fact, are larger than the dimensions of the "Unit" as defined in the Declaration of Condominium for each tower of Marina Pointe which is measured using interior measurements.

PENTHOUSE 2J



TOWER III

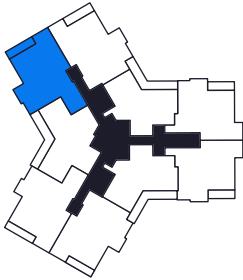
ATRIUM

FLOORS 1 – 14



3 BED / 2.5 BATH + DEN

AIR CONDITIONED:	2,442 SQ. FT.
TERRACE:	172 SQ. FT.
TOTAL LIVING SPACE:	2,614 SQ. FT.
	243 SQ. MT.



There are various methods for calculating the total square footage of a condominium unit, and depending on the method of calculation, the quoted square footage of a condominium unit may vary by more than a nominal amount. The dimensions as shown are measured to the exterior boundaries of the exterior walls and the centerline of interior demising walls and, in fact, are larger than the dimensions of the "Unit" as defined in the Declaration of Condominium for each tower of Marina Pointe which is measured using interior measurements.

SEAFARER

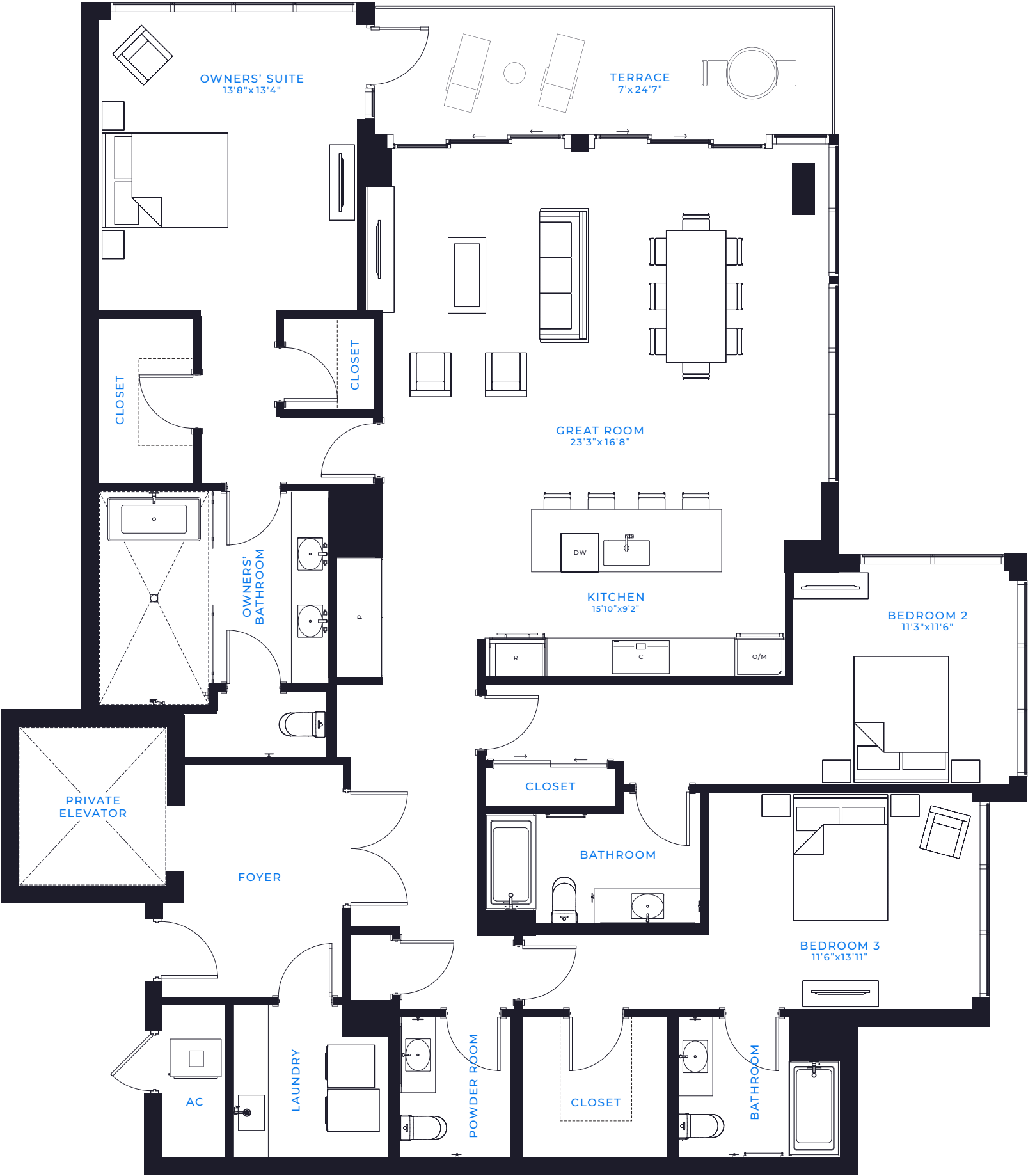
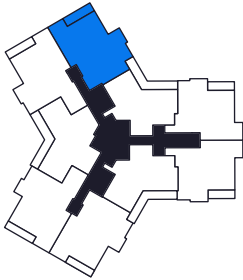
3 BED / 3.5 BATH

AIR CONDITIONED:2,468 SQ. FT.

TERRACE:172 SQ. FT.

TOTAL LIVING SPACE:2,640 SQ. FT.

245 SQ. MT.



There are various methods for calculating the total square footage of a condominium unit, and depending on the method of calculation, the quoted square footage of a condominium unit may vary by more than a nominal amount. The dimensions as shown are measured to the exterior boundaries of the exterior walls and the centerline of interior demising walls and, in fact, are larger than the dimensions of the "Unit" as defined in the Declaration of Condominium for each tower of Marina Pointe which is measured using interior measurements.

SANDGLASS



2 BED / 2.5 BATH

AIR CONDITIONED:

1,977 SQ. FT.

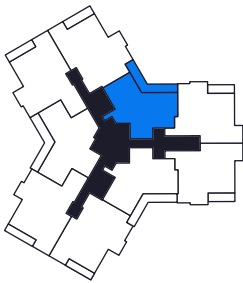
TERRACE:

348 SQ. FT.

TOTAL LIVING SPACE:

2,326 SQ. FT.

216 SQ. MT.



There are various methods for calculating the total square footage of a condominium unit, and depending on the method of calculation, the quoted square footage of a condominium unit may vary by more than a nominal amount. The dimensions as shown are measured to the exterior boundaries of the exterior walls and the centerline of interior demising walls and, in fact, are larger than the dimensions of the "Unit" as defined in the Declaration of Condominium for each tower of Marina Pointe which is measured using interior measurements.

WATERSOUND

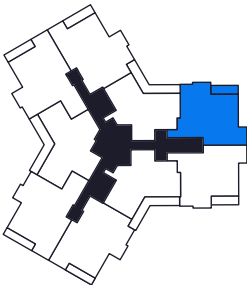
2 BED / 2.5 BATH + DEN

AIR CONDITIONED:2,227 SQ. FT.

TERRACE:166 SQ. FT.

TOTAL LIVING SPACE:2,393 SQ. FT.

222 SQ. MT.



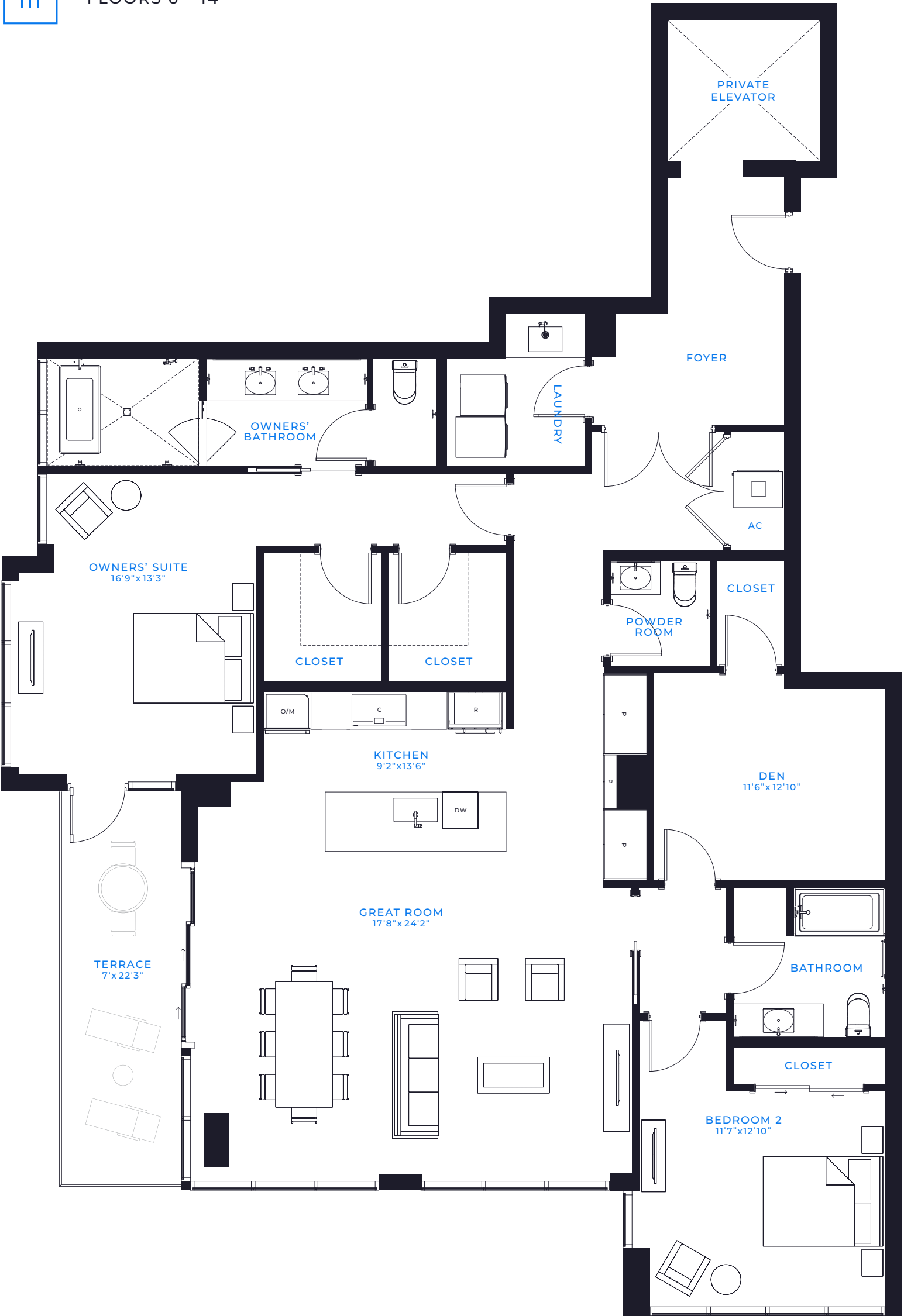
There are various methods for calculating the total square footage of a condominium unit, and depending on the method of calculation, the quoted square footage of a condominium unit may vary by more than a nominal amount. The dimensions as shown are measured to the exterior boundaries of the exterior walls and the centerline of interior demising walls and, in fact, are larger than the dimensions of the "Unit" as defined in the Declaration of Condominium for each tower of Marina Pointe which is measured using interior measurements.



WATERSOUND II

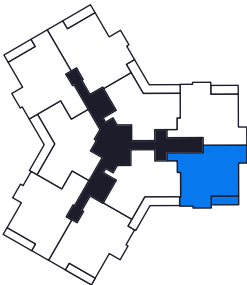


FLOORS 6 – 14



2 BED / 2.5 BATH + DEN

AIR CONDITIONED:	2,227 SQ. FT.
TERRACE:	166 SQ. FT.
TOTAL LIVING SPACE:	2,393 SQ. FT.
	222 SQ. MT.



There are various methods for calculating the total square footage of a condominium unit, and depending on the method of calculation, the quoted square footage of a condominium unit may vary by more than a nominal amount. The dimensions as shown are measured to the exterior boundaries of the exterior walls and the centerline of interior demising walls and, in fact, are larger than the dimensions of the "Unit" as defined in the Declaration of Condominium for each tower of Marina Pointe which is measured using interior measurements.

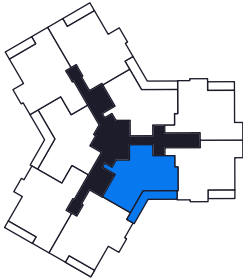
SANDGLASS II

FLOORS 2 – 4, 6 – 14



2 BED / 2.5 BATH

AIR CONDITIONED:	1,964 SQ. FT.
TERRACE:	348 SQ. FT.
TOTAL LIVING SPACE:	2,312 SQ. FT.
	215 SQ. MT.



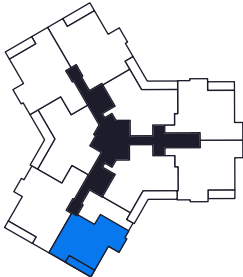
There are various methods for calculating the total square footage of a condominium unit, and depending on the method of calculation, the quoted square footage of a condominium unit may vary by more than a nominal amount. The dimensions as shown are measured to the exterior boundaries of the exterior walls and the centerline of interior demising walls and, in fact, are larger than the dimensions of the "Unit" as defined in the Declaration of Condominium for each tower of Marina Pointe which is measured using interior measurements.

SEAFARER DEMI



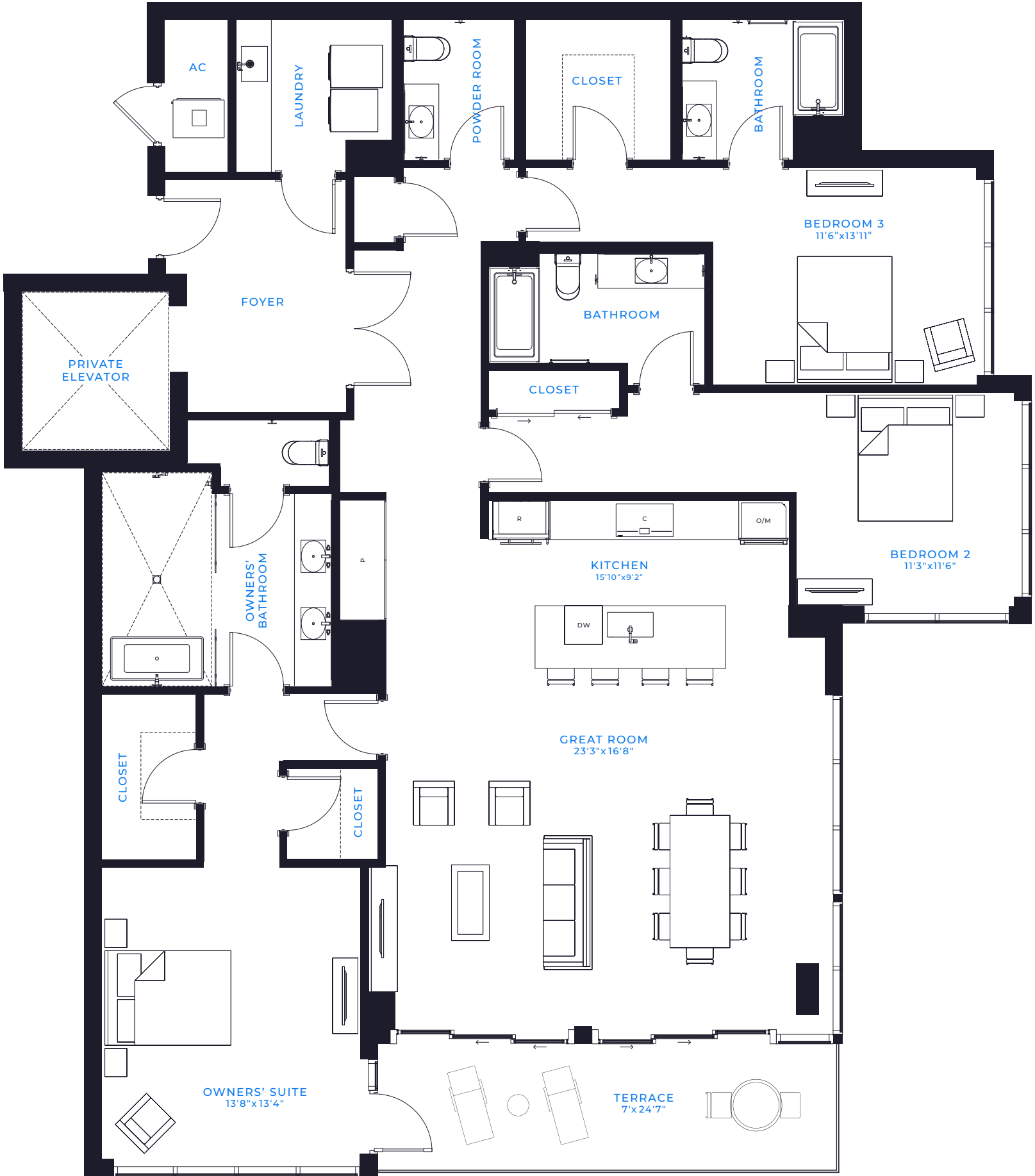
2 BED / 2.5 BATH

AIR CONDITIONED:	1,769 SQ. FT.
TERRACE:	138 SQ. FT.
TOTAL LIVING SPACE:	1,907 SQ. FT.
	177 SQ. MT.



There are various methods for calculating the total square footage of a condominium unit, and depending on the method of calculation, the quoted square footage of a condominium unit may vary by more than a nominal amount. The dimensions as shown are measured to the exterior boundaries of the exterior walls and the centerline of interior demising walls and, in fact, are larger than the dimensions of the "Unit" as defined in the Declaration of Condominium for each tower of Marina Pointe which is measured using interior measurements.

SEAFARER II



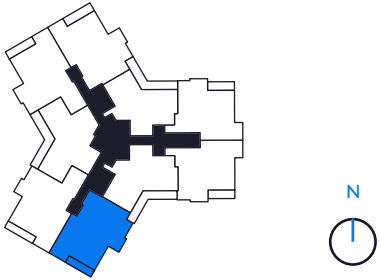
3 BED / 3.5 BATH

AIR CONDITIONED: 2,450 SQ. FT.

TERRACE: 172 SQ. FT.

TOTAL LIVING SPACE: 2,622 SQ. FT.

244 SQ. MT.



There are various methods for calculating the total square footage of a condominium unit, and depending on the method of calculation, the quoted square footage of a condominium unit may vary by more than a nominal amount. The dimensions as shown are measured to the exterior boundaries of the exterior walls and the centerline of interior demising walls and, in fact, are larger than the dimensions of the "Unit" as defined in the Declaration of Condominium for each tower of Marina Pointe which is measured using interior measurements.

ATRIUM II

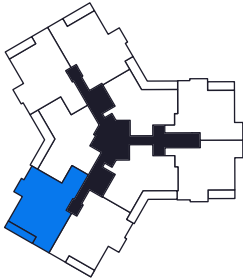
3 BED / 2.5 BATH + DEN

AIR CONDITIONED:2,450 SQ. FT.

TERRACE:172 SQ. FT.

TOTAL LIVING SPACE:2,622 SQ. FT.

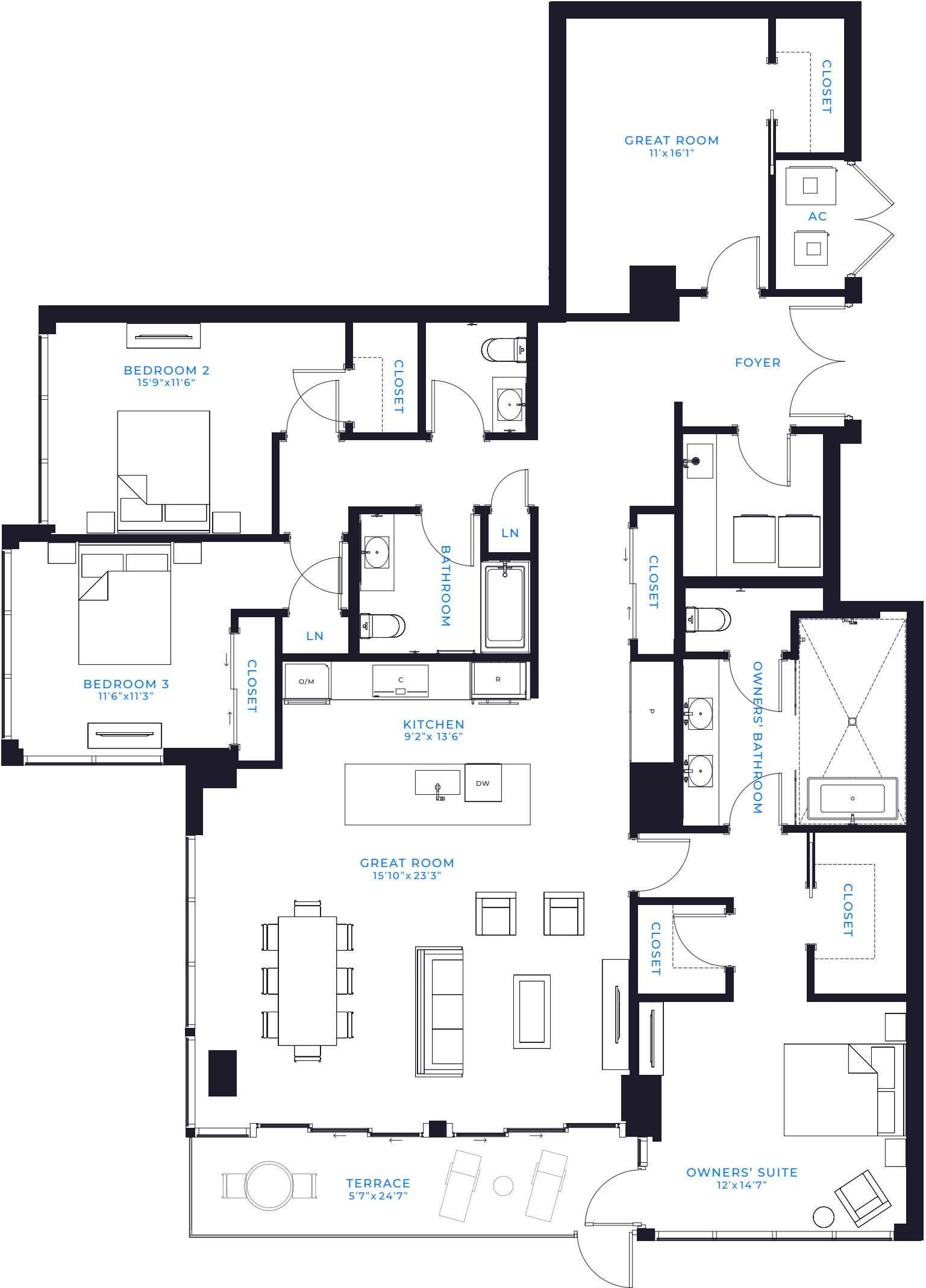
244 SQ. MT.



There are various methods for calculating the total square footage of a condominium unit, and depending on the method of calculation, the quoted square footage of a condominium unit may vary by more than a nominal amount. The dimensions as shown are measured to the exterior boundaries of the exterior walls and the centerline of interior demising walls and, in fact, are larger than the dimensions of the "Unit" as defined in the Declaration of Condominium for each tower of Marina Pointe which is measured using interior measurements.

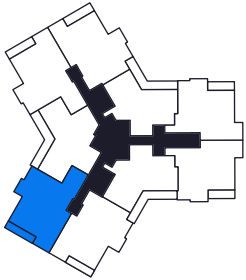


ATRIUM TIDE



3 BED / 2.5 BATH + DEN

AIR CONDITIONED:	2,274 SQ. FT.
TERRACE:	138 SQ. FT.
TOTAL LIVING SPACE:	2,412 SQ. FT.
	224 SQ. MT.



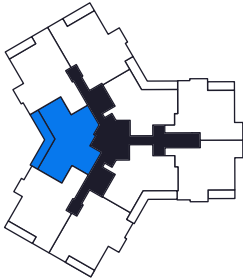
There are various methods for calculating the total square footage of a condominium unit, and depending on the method of calculation, the quoted square footage of a condominium unit may vary by more than a nominal amount. The dimensions as shown are measured to the exterior boundaries of the exterior walls and the centerline of interior demising walls and, in fact, are larger than the dimensions of the "Unit" as defined in the Declaration of Condominium for each tower of Marina Pointe which is measured using interior measurements.

BELVEDERE



2 BED / 3 BATH + DEN

AIR CONDITIONED:	2,159 SQ. FT.
TERRACE:	348 SQ. FT.
TOTAL LIVING SPACE:	2,507 SQ. FT.
	233 SQ. MT.



There are various methods for calculating the total square footage of a condominium unit, and depending on the method of calculation, the quoted square footage of a condominium unit may vary by more than a nominal amount. The dimensions as shown are measured to the exterior boundaries of the exterior walls and the centerline of interior demising walls and, in fact, are larger than the dimensions of the "Unit" as defined in the Declaration of Condominium for each tower of Marina Pointe which is measured using interior measurements.

BELVEDERE TIDE



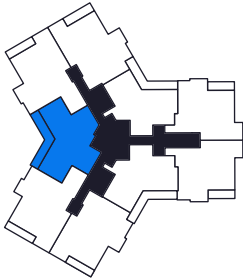
2 BED / 3 BATH + DEN

AIR CONDITIONED: 2,159 SQ. FT.

TERRACE: 348 SQ. FT.

TOTAL LIVING SPACE: 2,507 SQ. FT.

233 SQ. MT.



There are various methods for calculating the total square footage of a condominium unit, and depending on the method of calculation, the quoted square footage of a condominium unit may vary by more than a nominal amount. The dimensions as shown are measured to the exterior boundaries of the exterior walls and the centerline of interior demising walls and, in fact, are larger than the dimensions of the "Unit" as defined in the Declaration of Condominium for each tower of Marina Pointe which is measured using interior measurements.

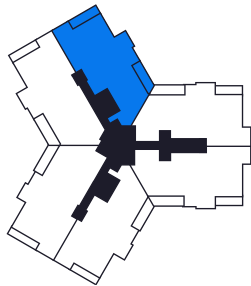
PENTHOUSE 1 + 11

FLOORS 15* + 16



3 BED / 3.5 BATH + DEN

AIR CONDITIONED: 3,669 SQ. FT.
TERRACE: 343 SQ. FT.
TOTAL LIVING SPACE: 4,013 SQ. FT.
373 SQ. MT.



*15th floor varies slightly

Square footage as calculated from a 16th floor unit. There are various methods for calculating the total square footage of a condominium unit, and depending on the method of calculation, the quoted square footage of a condominium unit may vary by more than a nominal amount. The dimensions as shown are measured to the exterior boundaries of the exterior walls and the centerline of interior demising walls and, in fact, are larger than the dimensions of the "Unit" as defined in the Declaration of Condominium for each tower of Marina Pointe which is measured using interior measurements.

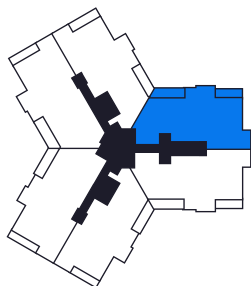
PENTHOUSE 3 + 13

FLOORS 15* + 16



3 BED / 3.5 BATH + DEN

AIR CONDITIONED: 3,349 SQ. FT.
TERRACE: 343 SQ. FT.
TOTAL LIVING SPACE: 3,692 SQ. FT.
343 SQ. MT.

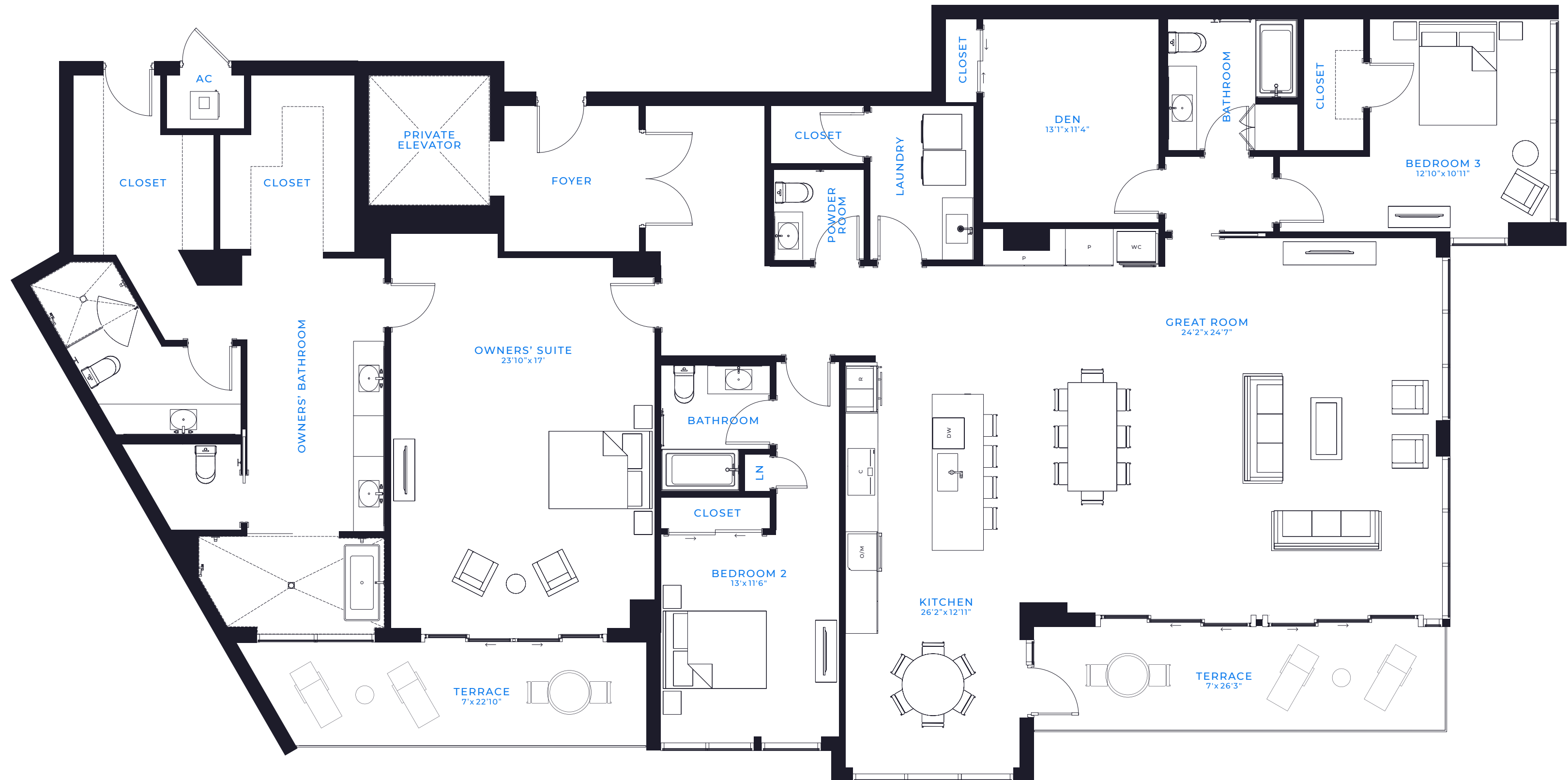


*15th floor varies slightly

Square footage as calculated from a 16th floor unit. There are various methods for calculating the total square footage of a condominium unit, and depending on the method of calculation, the quoted square footage of a condominium unit may vary by more than a nominal amount. The dimensions as shown are measured to the exterior boundaries of the exterior walls and the centerline of interior demising walls and, in fact, are larger than the dimensions of the "Unit" as defined in the Declaration of Condominium for each tower of Marina Pointe which is measured using interior measurements.

PENTHOUSE 4 + 14

FLOORS 15* + 16

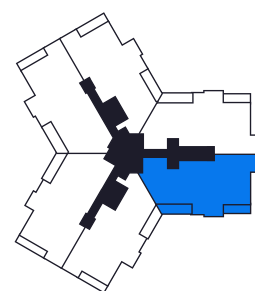


3 BED / 3.5 BATH + DEN

AIR CONDITIONED: 3,571 SQ. FT.

TERRACE: 358 SQ. FT.

TOTAL LIVING SPACE: 3,929 SQ. FT.
365 SQ. MT.

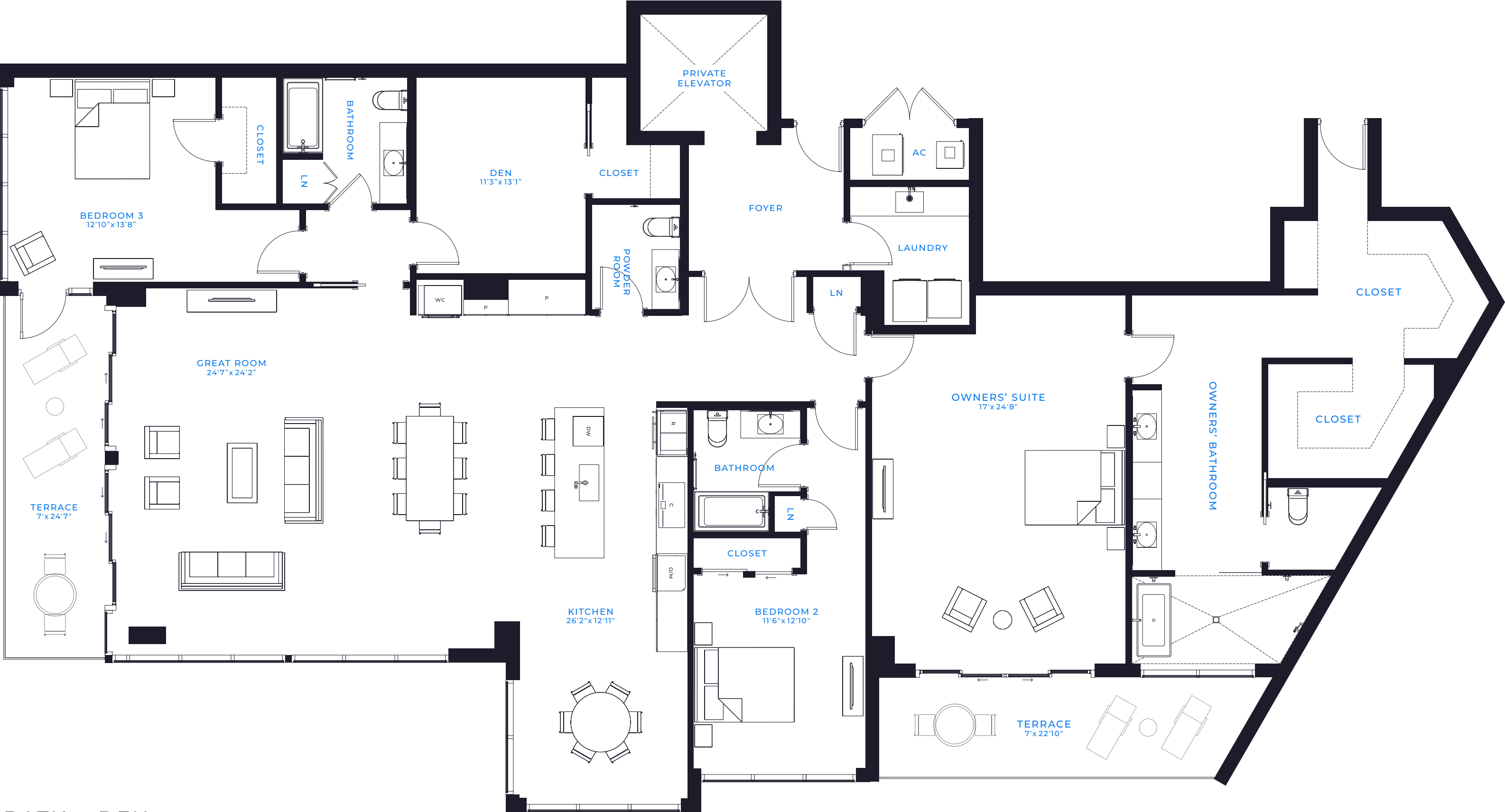


* 15th floor varies slightly

Square footage as calculated from a 16th floor unit. There are various methods for calculating the total square footage of a condominium unit, and depending on the method of calculation, the quoted square footage of a condominium unit may vary by more than a nominal amount. The dimensions as shown are measured to the exterior boundaries of the exterior walls and the centerline of interior demising walls and, in fact, are larger than the dimensions of the "Unit" as defined in the Declaration of Condominium for each tower of Marina Pointe which is measured using interior measurements.

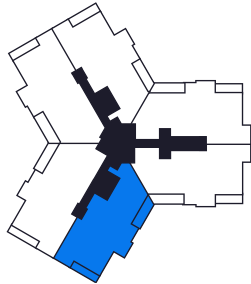
PENTHOUSE 6 + 16

FLOORS 15* + 16



3 BED / 3.5 BATH + DEN

AIR CONDITIONED: 3,571 SQ. FT.
TERRACE: 343 SQ. FT.
TOTAL LIVING SPACE: 3,914 SQ. FT.
364 SQ. MT.

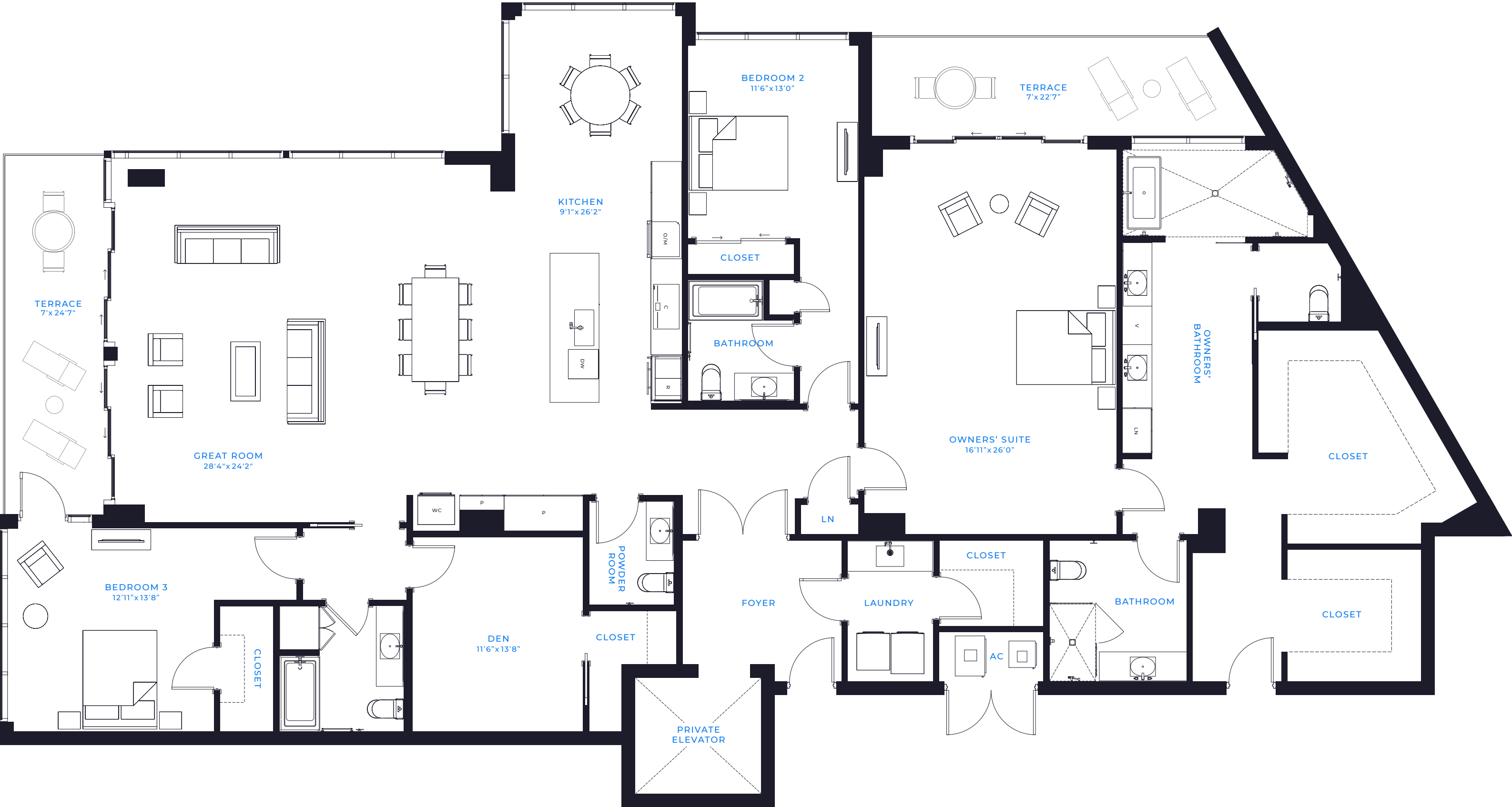


* 15th floor varies slightly

Square footage as calculated from a 16th floor unit. There are various methods for calculating the total square footage of a condominium unit, and depending on the method of calculation, the quoted square footage of a condominium unit may vary by more than a nominal amount. The dimensions as shown are measured to the exterior boundaries of the exterior walls and the centerline of interior demising walls and, in fact, are larger than the dimensions of the "Unit" as defined in the Declaration of Condominium for each tower of Marina Pointe which is measured using interior measurements.

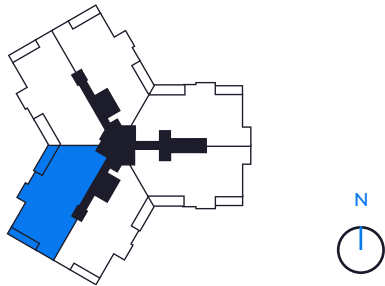
PENTHOUSE 7 + 17

FLOORS 15* + 16



3 BED / 4.5 BATH + DEN

AIR CONDITIONED: 3,350 SQ. FT.
TERRACE: 343 SQ. FT.
TOTAL LIVING SPACE: 3,693 SQ. FT.
343 SQ. MT.



*15th floor varies slightly
Square footage as calculated from a 16th floor unit. There are various methods for calculating the total square footage of a condominium unit, and depending on the method of calculation, the quoted square footage of a condominium unit may vary by more than a nominal amount. The dimensions as shown are measured to the exterior boundaries of the exterior walls and the centerline of interior demising walls and, in fact, are larger than the dimensions of the "Unit" as defined in the Declaration of Condominium for each tower of Marina Pointe which is measured using interior measurements.

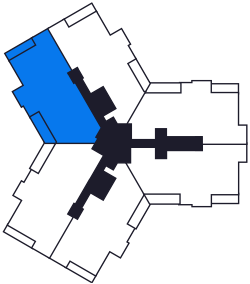
PENTHOUSE 9 + 19

FLOORS 15* + 16



3 BED / 4.5 BATH + DEN

AIR CONDITIONED: 3,650 SQ. FT.
TERRACE: 343 SQ. FT.
TOTAL LIVING SPACE: 3,993 SQ. FT.
370 SQ. MT.



*15th floor varies slightly
Square footage as calculated from a 16th floor unit. There are various methods for calculating the total square footage of a condominium unit, and depending on the method of calculation, the quoted square footage of a condominium unit may vary by more than a nominal amount. The dimensions as shown are measured to the exterior boundaries of the exterior walls and the centerline of interior demising walls and, in fact, are larger than the dimensions of the "Unit" as defined in the Declaration of Condominium for each tower of Marina Pointe which is measured using interior measurements.