

Westview is a new master-planned community bringing upscale townhomes and single-family homes for sale to the city of Kissimmee, FL.

Amenities

Innovative multi-family and single family homes with inspired amenities.

Swimming Pool

Tennis Court

Clubhouse

Soccer Field

Dog Park

Pickleball Court

Splash Park

Volleyball Court

Tot Lot

Trail

Baseball Field

Basketball Court

What's nearby

Located in the beautiful city of Kissimmee, FL.

Stonegate Golf Club at Solivita

Huckleberry Island Trailhead

The Grille at Stonegate Golf Club

Snell Creek Trailhead

Mosaics

K & M Drugs

The Marketplace Bistro at Stonegate Golf Club

Jolens Carts

Lake Marion Creek Wildlife Management Area

Herbalife, dosis de energía

AL Prime Water

Butterfly Home Accents

Overlook Townhomes

Overlook Townhomes is a brand-new collection offering new townhomes now selling at the Westview master-planned community in Poinciana, FL. This amenity-rich, pet-friendly community has something for residents of all ages to enjoy, including a swimming pool, dog park, clubhouse and sports fields. Lake Marion Creek Wildlife Management Area is nearby with hiking trails, as well as Poinciana for shopping, dining and entertainment options. The community is in close proximity to Highway 17 for easy commuting to Greater Orlando.

Floorplans

Amalfi

3 bd . 2 ba . 1 half ba . 1,689 ft²

Minori

3 bd . 2 ba . 1 half ba . 1,834 ft²

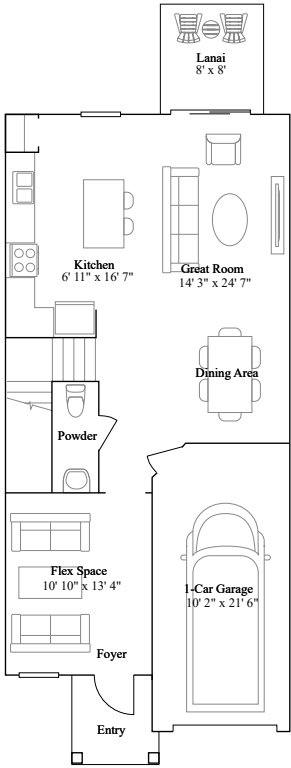
Sienna

3 bd . 2 ba . 1 half ba . 1,873 ft²

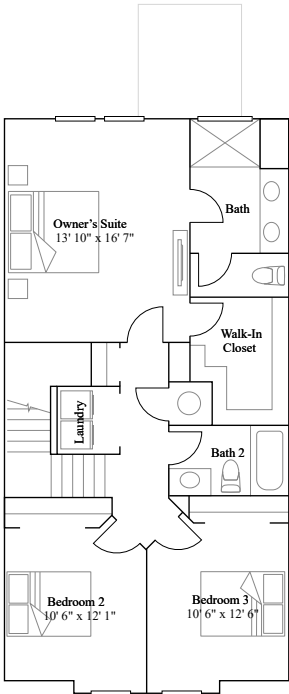
Amalfi

3 bd . 2 ba . 1 half ba . 1,689 ft²

1st Floor



2nd Floor



Available Exteriors



Craftsman - 4Plex



Craftsman - 6Plex



Craftsman - 8Plex



Farmhouse - 4Plex



Farmhouse - 6Plex

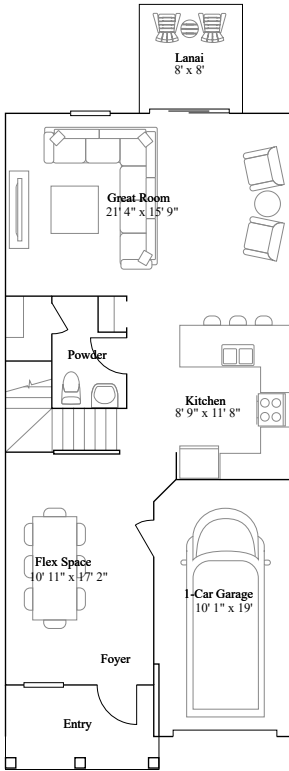


Farmhouse - 8Plex

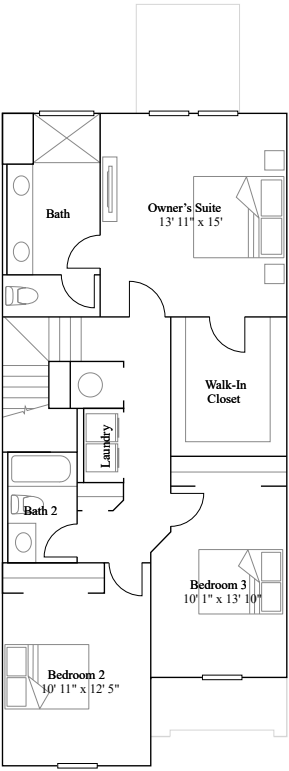
Minori

3 bd . 2 ba . 1 half ba . 1,834 ft²

1st Floor



2nd Floor



Available Exteriors



Craftsman - 4Plex



Craftsman - 6Plex



Craftsman - 8Plex



Farmhouse - 4Plex



Farmhouse - 6Plex

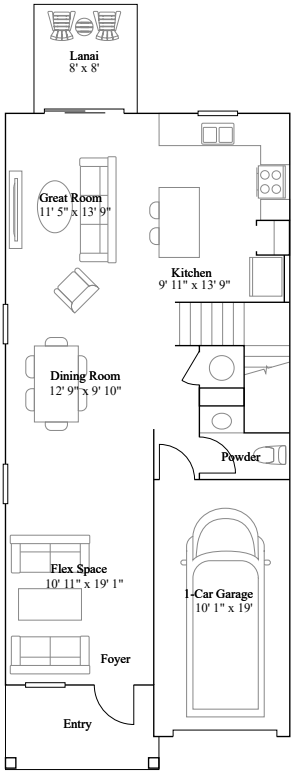


Farmhouse - 8Plex

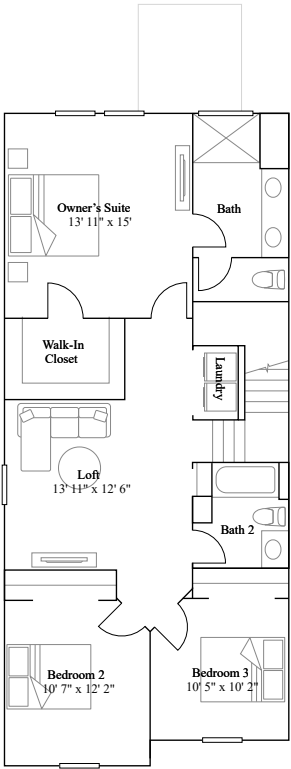
Sienna

3 bd . 2 ba . 1 half ba . 1,873 ft²

1st Floor



2nd Floor



Available Exteriors



Craftsman - 4Plex



Craftsman - 6Plex



Craftsman - 8Plex



Farmhouse - 4Plex



Farmhouse - 6Plex



Farmhouse - 8Plex

Aden South I

Aden South I brings new single-family homes to the Westview masterplan in sunny Kissimmee, FL. The masterplan features a variety of fantastic onsite amenities, including a relaxing swimming pool, trails, dog park, sport courts and more. Residents enjoy proximity to Highway 17 for easy travel to the greater Orlando area and nearby Poinciana, providing convenient access to local eateries, shopping and services, including Florida Poinciana Hospital. Nature lovers are close to ample options for outdoor recreation at the Lake Marion Creek Wildlife Management Area, complete with a system of multi-use trails. Amenity availability varies by collection, so ask your New Home Consultant for additional details.

Floorplans

Annapolis

3 bd . 2 ba . 1,444 ft²

Atlanta

4 bd . 2 ba . 1 half ba . 1,879 ft²

Columbia

5 bd . 2 ba . 1 half ba . 2,370 ft²

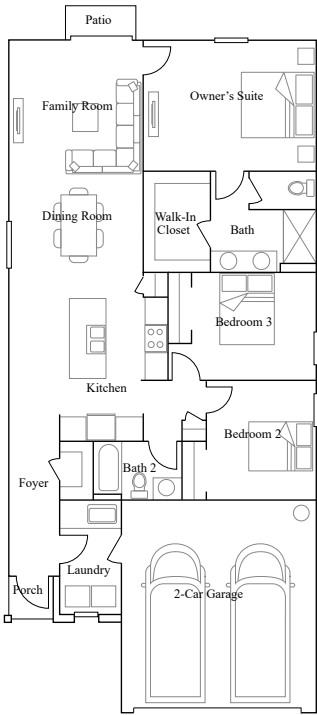
Concord

6 bd . 3 ba . 2,575 ft²

Annapolis

3 bd . 2 ba . 1,444 ft²

1st Floor



Available Exteriors



Exterior E



Exterior H

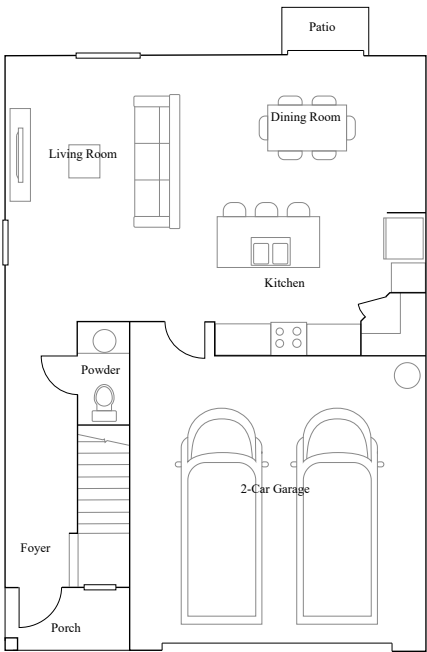


Exterior J

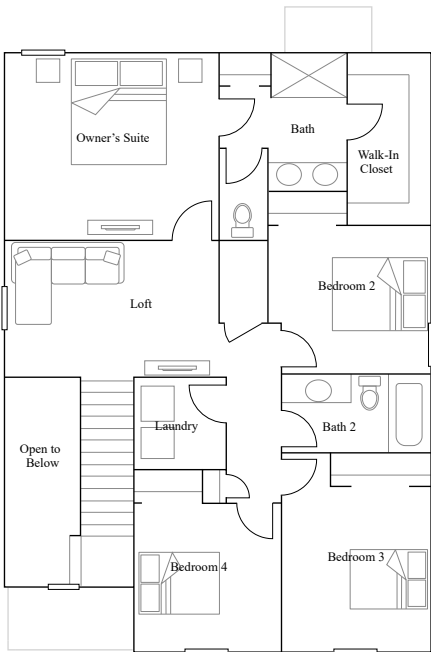
Atlanta

4 bd . 2 ba . 1 half ba . 1,879 ft²

1st Floor



2nd Floor



Available Exteriors



Exterior E



Exterior H

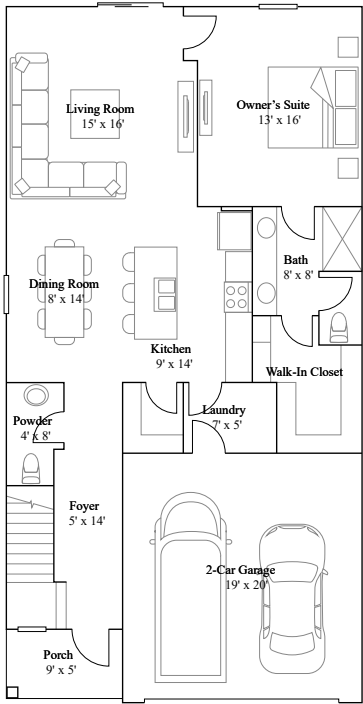


Exterior J

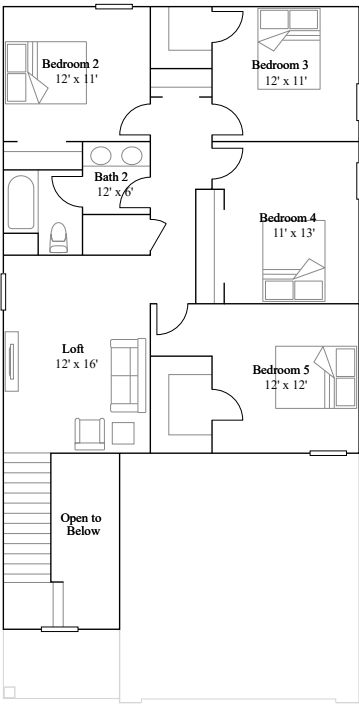
Columbia

5 bd . 2 ba . 1 half ba . 2,370 ft²

1st Floor



2nd Floor



Available Exteriors



Exterior E



Exterior H

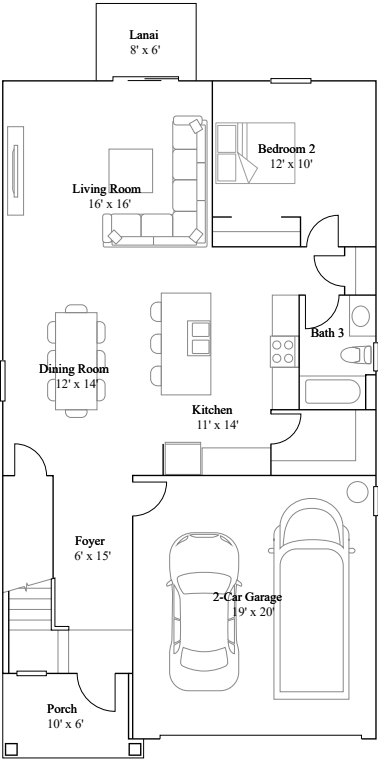


Exterior J

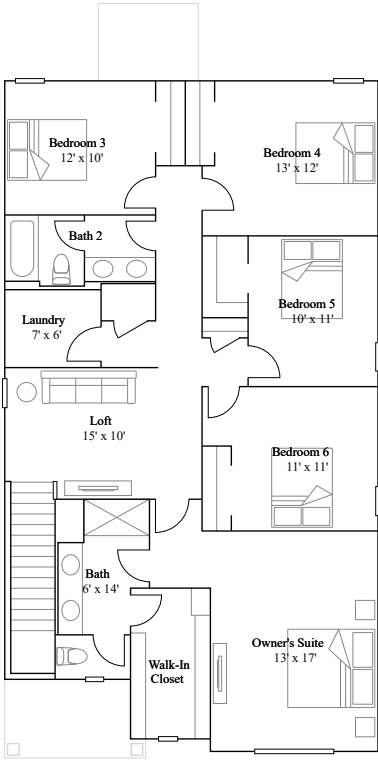
Concord

6 bd . 3 ba . 2,575 ft²

1st Floor



2nd Floor



Available Exteriors



Exterior E



Exterior H



Exterior J

Aden South III

Aden South III offers new single-family homes for sale within the Westview masterplan in sunny Kissimmee, FL. The masterplan features fantastic onsite communities, including a splash park, sport courts, dog park and more for enhanced everyday living. Highway 17 offers convenient commutes and travel to the greater Orlando area and nearby Poinciana, making shopping, dining and services, including Florida Poinciana Hospital, easily accessible. The Lake Marion Creek Wildlife Management Area features an elaborate multi-use trail system ready for hours of outdoor recreation. Amenity availability varies by collection, so ask your New Home Consultant for additional details.

Floorplans

Dover

3 bd . 2 ba . 1,555 ft²

Hartford

4 bd . 2 ba . 1,936 ft²

Discovery

4 bd . 3 ba . 2,109 ft²

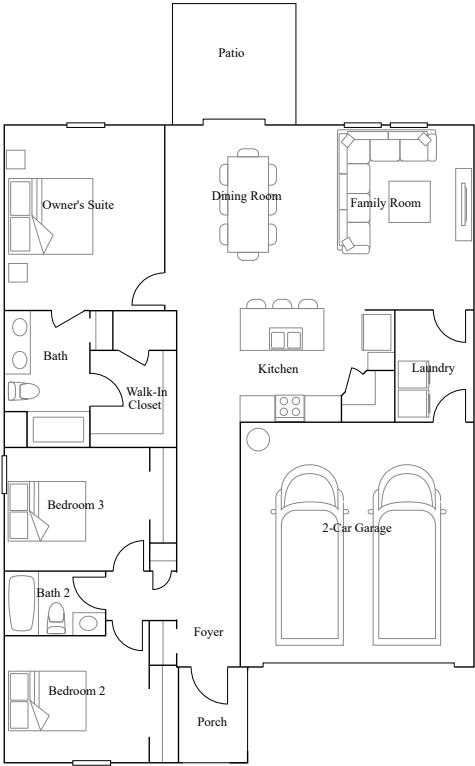
Sutton

5 bd . 3 ba . 2,575 ft²

Dover

3 bd . 2 ba . 1,555 ft²

1st Floor



Available Exteriors



Exterior E

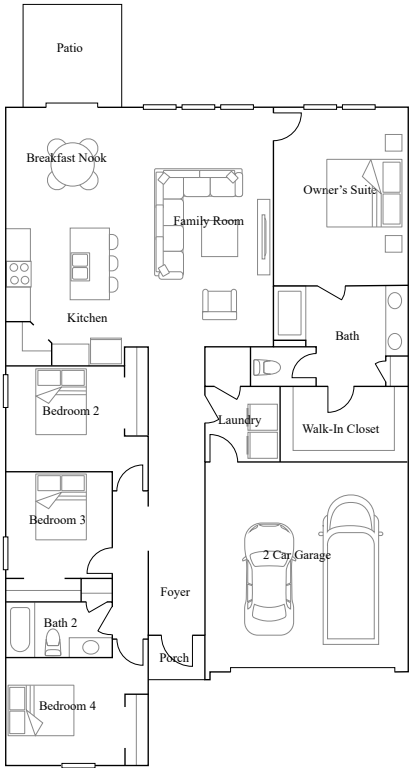


Exterior H

Hartford

4 bd . 2 ba . 1,936 ft²

1st Floor



Available Exteriors



Exterior E

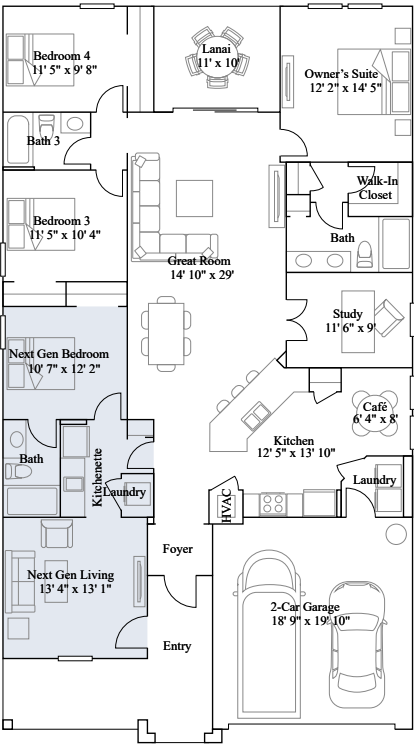


Exterior H

Discovery

4 bd . 3 ba . 2,109 ft²

1st Floor



Available Exteriors



Exterior E



Exterior J

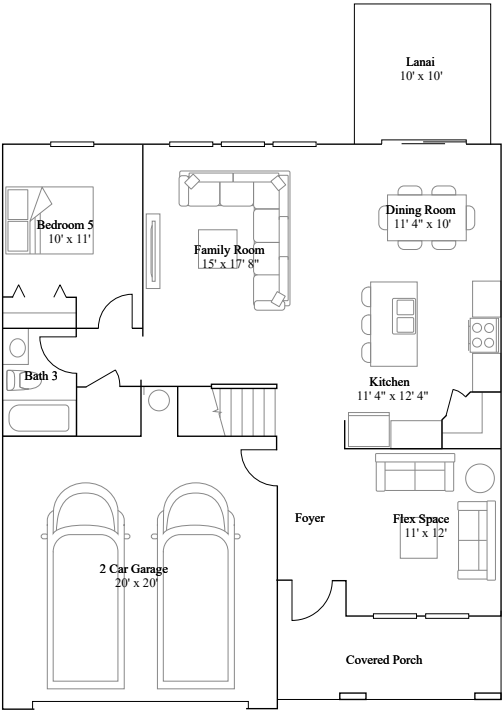


Exterior K

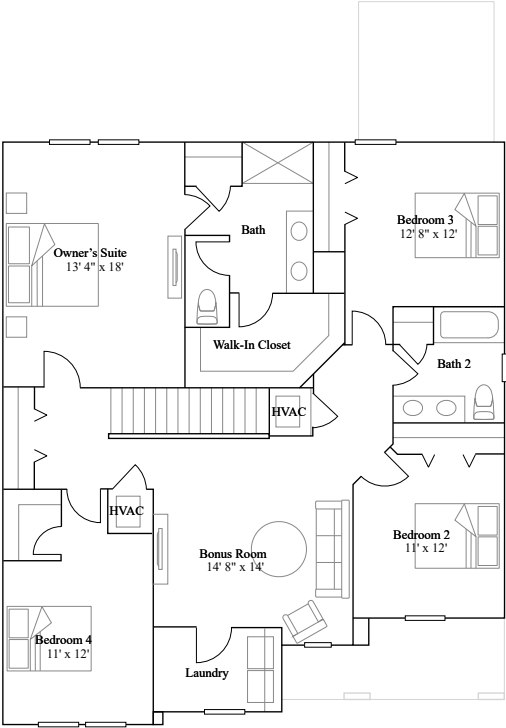
Sutton

5 bd . 3 ba . 2,575 ft²

1st Floor



2nd Floor



Available Exteriors



Exterior A



Exterior B



Exterior C

Aden South II

Aden South II brings new single-family homes to the Westview masterplan in Kissimmee, FL. Residents benefit from onsite amenities including a relaxing swimming pool, clubhouse, sport courts and much more. Close proximity to Highway 17 simplifies everyday commutes and travel to Orlando and across central Florida, and nature lovers can easily explore the natural scenery and trails at the Lake Marion Creek Wildlife Management Area. Nearby Poinciana offers urban amenities including shopping, dining and medical services at Florida Poinciana Hospital.

Floorplans

Atlanta

4 bd . 2 ba . 1 half ba . 1,879 ft²

Columbia

5 bd . 2 ba . 1 half ba . 2,370 ft²

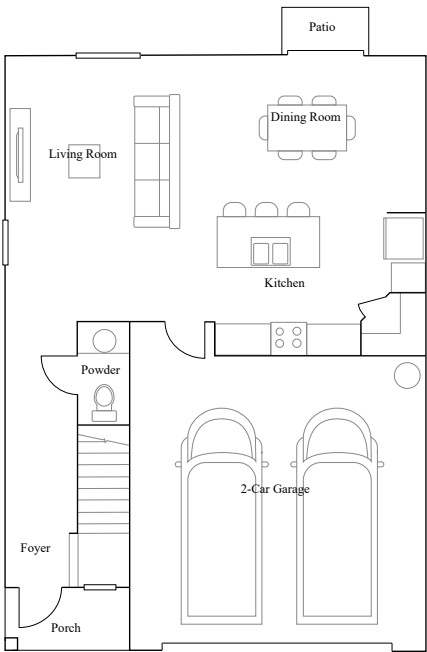
Concord

6 bd . 3 ba . 2,575 ft²

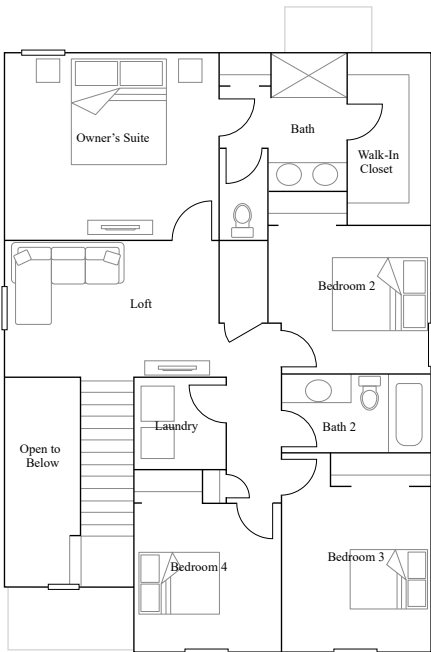
Atlanta

4 bd . 2 ba . 1 half ba . 1,879 ft²

1st Floor



2nd Floor



Available Exteriors



Exterior E

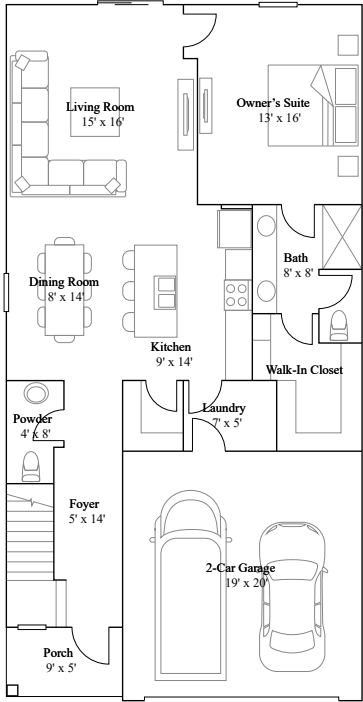


Exterior H

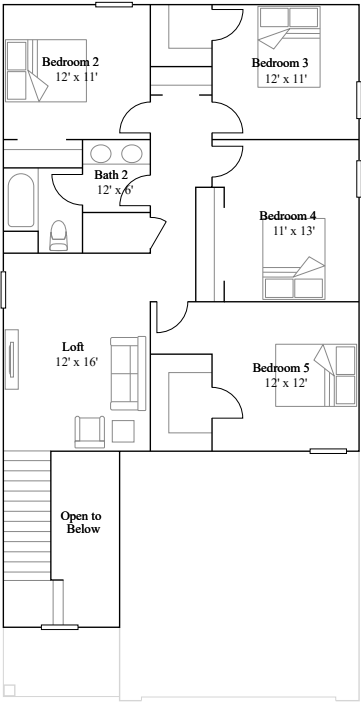
Columbia

5 bd . 2 ba . 1 half ba . 2,370 ft²

1st Floor



2nd Floor



Available Exteriors



Exterior E

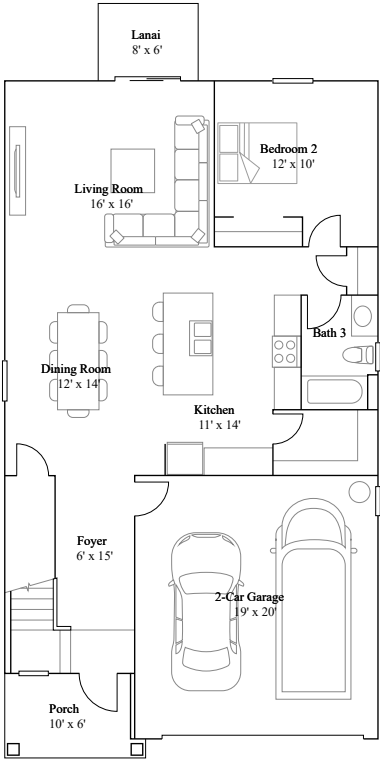


Exterior H

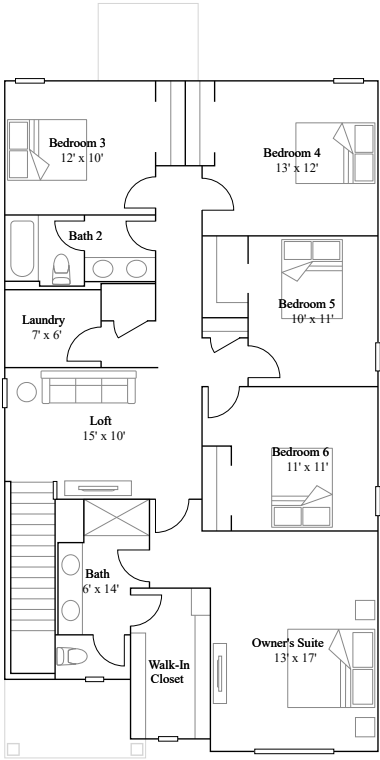
Concord

6 bd . 3 ba . 2,575 ft²

1st Floor



2nd Floor



Available Exteriors



Exterior E



Exterior H

Everything included

See all you can enjoy when everything's included

All features and products can vary by collection. View **Westview** to see offerings by collection. Currently viewing the **Overlook Townhomes**

Kitchen

Stainless steel free-standing electric range ready to create new recipes

Stainless steel multicycle dishwasher will simplify post-meal clean up

Stainless steel over-the-range microwave oven for quick and easy meals

Stainless steel free-standing electric range

Stainless steel over-the-range microwave oven

Stainless steel multicycle dishwasher

Quartz countertops

Stainless steel undermount sink

Designer-selected shaker style cabinetry

LED lighting

Owners Suite

Ceramic tile flooring, quartz countertops and designer-selected cabinetry in the owner's suite bathroom

Quartz countertops

Designer-selected cabinetry

Ceramic tile flooring in bathroom

Elongated toilets

Interior	<p>All bedrooms feature plush wall-to-wall carpeting and 2" faux window blinds</p> <p>Sherwin-Williams® low-VOC paint</p> <p>2" faux window blinds</p> <p>Rectangular two-panel interior doors</p> <p>Plush wall-to-wall carpeting in all bedrooms</p> <p>Ceramic tile flooring at entry and wet areas</p> <p>Taexx® built-in pest control system</p>
Exterior	<p>Sod and irrigation</p> <p>Automatic garage door opener</p> <p>Designer-coordinated exterior color and roof combinations</p>
Energy Efficiency	<p>Honeywell programmable thermostat helps to maintain a comfortable home</p> <p>Efficient electric heat pump</p> <p>Programmable thermostats</p> <p>LED lighting</p> <p>Low-E windows</p>
Services	<p>myLennar (online assistant to help through the homebuying process)</p> <p>Lennar Mortgage (financial services)</p> <p>Lennar Title (title services)</p>

Lennar Insurance Agency (home insurance)

Limited one-year warranty on workmanship

Find the home that’s right for you.

Prices and availability as of November 7, 2024. All subject to change.

Homesite	Price	Details	Plan	Address
0375	Priced at \$289,990 \$316,990	3 bd · 2 ba · 1 half ba · 1,689 ft²	Amalfi	2499 SKYLINE LOOP
0341	Priced at \$291,490 \$317,490	3 bd · 2 ba · 1 half ba · 1,689 ft²	Amalfi	2524 SKYLINE LOOP
0364	Priced at \$301,490 \$330,490	3 bd · 2 ba · 1 half ba · 1,834 ft²	Minori	2545 SKYLINE LOOP
0032	Priced at \$322,565 \$332,565	3 bd · 2 ba · 1,444 ft²	Annapolis	5814 Le Marin Way
0339	Priced at \$324,000 \$342,000	3 bd · 2 ba · 1 half ba · 1,873 ft²	Sienna	2516 SKYLINE LOOP
0026	Priced at \$329,999 \$334,565	3 bd · 2 ba · 1,444 ft²	Annapolis	5790 Le Marin Way
0141	Priced at \$341,990	3 bd · 2 ba · 1,555 ft²	Dover	4777 Cloister Street
0124	Priced at \$348,490	3 bd · 2 ba · 1,555 ft²	Dover	4776 Cloister Street
0149	Priced at \$350,990	4 bd · 2 ba · 1 half ba · 1,879 ft²	Atlanta	4780 Guinep Lane
0142	Priced at \$363,990	4 bd · 2 ba · 1,936 ft²	Hartford	4783 Cloister Street
0152	Priced at \$387,990 \$392,990	5 bd · 2 ba · 1 half ba · 2,370 ft²	Columbia	4762 Guinep Lane

Homesite	Price	Details	Plan	Address
0029	Priced at \$409,315 \$416,815	6 bd · 3 ba · 2,575 ft²	Concord	5802 Le Marin Way
0184	Priced at \$436,490	5 bd · 3 ba · 2,575 ft²	Sutton	5793 Gingham Drive
0185	Priced at \$443,490	4 bd · 3 ba · 2,109 ft²	Discovery	5787 Gingham Drive
0038	Priced at \$379,999 \$391,240	5 bd · 2 ba · 1 half ba · 2,370 ft²	Columbia	5842 Le Marin Way

Services

Service	Provider	Contact
Electric Company	Duke Energy	800-777-9898
Waste Water Company	Toho Water Authority	863-496-1770
Water Company	Toho Water Authority	863-496-1770

Services can vary by collection. To see services for all collections in this community, please contact our team or visit Westview on [Lennar.com](#)

Nearby schools

Public schools zoned for this community

Palmetto Elementary School

Public PK, K-5
Polk County Public Schools

C-

Overall Niche Grade
[View on Niche.com](#)

Lake Marion Creek Middle School

Public 6-8
Polk County Public Schools

C-

Overall Niche Grade
[View on Niche.com](#)

Haines City Senior High School

Public PK, 9-12
Polk County Public Schools

C+

Overall Niche Grade
[View on Niche.com](#)

Schools can sometimes vary by collection. To see nearby schools for all collections in this community, please contact our team or visit Overlook Townhomes on [Lennar.com](#)

Community information

Location	Hours		Phone
2406 Skyline Loop Kissimmee, FL 34758	Mon	10AM - 6PM	1-844-878-8310
	Tue	10AM - 6PM	
	Wed	10AM - 6PM	
	Thu	10AM - 6PM	
	Fri	10AM - 6PM	
	Sat	10AM - 6PM	
	Sun	11AM - 6PM	

HOA & Tax information

Aprox monthly HOA fees - \$184
Approximate tax rate - 1.12%

Why Lennar

We take pride in providing the easiest way to buy a home.

Where you want to live

We understand how you want to live, and create homes in communities in some of the most sought-after cities across the country.

A simpler way to buy

Our family of companies can assist you with your mortgage, title and insurance needs - allowing you to save time and money.

Something for everyone

We understand homebuilding, and people. Our homes cater to a variety of lifestyles, and reflect the culture and region in which they're built.

Features, amenities, floor plans, elevations, and designs vary and are subject to changes or substitution without notice. Items shown are artist's renderings and may contain options that are not standard on all models or not included in the purchase price. Availability may vary. Sq. ft. and dimensions are estimated; actual sq. ft. and dimensions will differ. Garage/bay sizes may vary from home to home and may not accommodate all vehicles. This is not an offer in states where prior registration is required. Void where prohibited by law. Copyright © 2021 Lennar Corporation. Lennar and the Lennar logo are U.S. registered service marks or service marks of Lennar Corporation and/or its subsidiaries. Seller's Broker: Lennar Realty, Inc. Construction License(s): CGC1518166. Date 1/22



Copyright © 2023 Lennar Corporation. All right reserved.