



MIDTOWN PARK

BY PROPER

*Residence  
01*

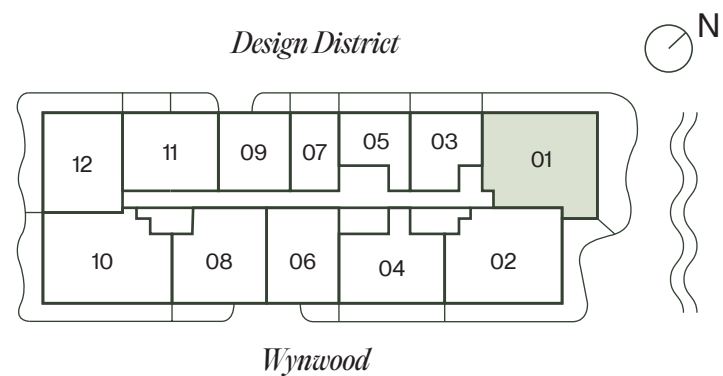
LUXURY RESIDENCES  
DESIGNED BY MEYER DAVIS STUDIO



Residence  
01

3 BEDROOMS | 3.5 BATHROOMS

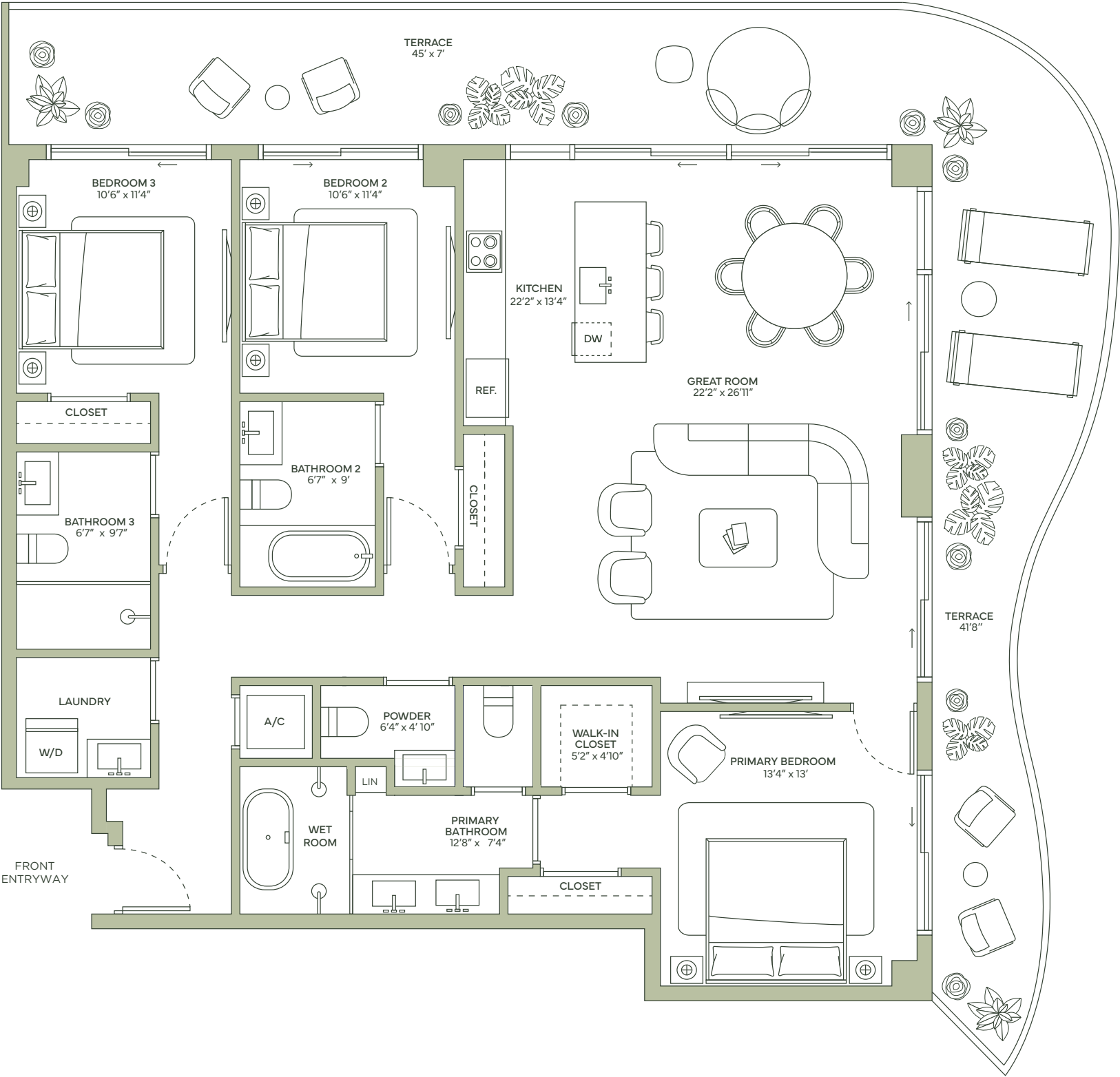
TOTAL	2,360 SQ FT   220 SQ M
INTERIOR	1,730 SQ FT   61 SQ M
EXTERIOR	630 SQ FT   59 SQ M



MIDTOWN PARK

BY PROPER

LUXURY RESIDENCES  
DESIGNED BY MEYER DAVIS STUDIO



ROSSO Development



By PROPER ARQUITECTONICA



ORAL REPRESENTATIONS CANNOT BE RELIED UPON AS CORRECTLY STATING THE REPRESENTATIONS OF THE DEVELOPER. FOR CORRECT REPRESENTATIONS, REFERENCE SHOULD BE MADE TO THE DOCUMENTS REQUIRED BY SECTION 718.503, FLORIDA STATUTES, TO BE FURNISHED BY A DEVELOPER TO A BUYER. THE DIMENSIONS AND SQUARE FOOTAGE STATED FOR ANY DEPICTED UNIT FLOOR PLAN ARE APPROXIMATE. THERE ARE VARIOUS RECOGNIZED METHODS FOR CALCULATING THE SQUARE FOOTAGE OF A UNIT. THE SQUARE FOOTAGE STATED HEREIN IS CALCULATED FROM THE EXTERIOR BOUNDARIES OF THE EXTERIOR WALLS TO THE CENTERLINE OF INTERIOR DEMISING WALLS WITHOUT DEDUCTIONS FOR CUTOUTS, CURVES, OR ARCHITECTURAL FEATURES. THIS METHOD TYPICALLY RESULTS IN QUOTED DIMENSIONS GREATER THAN THE DIMENSIONS THAT WOULD BE DETERMINED BY USING OTHER ACCEPTED METHODS. ALL DIMENSIONS ARE APPROXIMATE AND MAY VARY WITH ACTUAL CONSTRUCTION, AND ALL FLOOR PLANS AND DEVELOPMENT PLANS ARE SUBJECT TO CHANGE. THE SIZE AND CONFIGURATION OF BALCONIES AND TERRACES AND WINDOWS MAY VARY THROUGHOUT THE BUILDING. THE ILLUSTRATIONS AND IMAGES ARE CONCEPTUAL. THE FLOOR PLAN, UNIT LAYOUT, LOCATIONS OF WINDOWS, DOORS, CLOSETS, PLUMBING FIXTURES, MECHANICAL EQUIPMENT, APPLIANCES, STRUCTURAL ELEMENTS, ARCHITECTURAL DESIGN ELEMENTS AND THE USES, CONFIGURATIONS, AND ENTRIES TO ROOMS MAY BE CHANGED BASED ON FINAL APPROVED PLANS, PERMITTING, AND COMPLETED CONSTRUCTION. ALL DEPICTIONS OF FURNISHINGS, APPLIANCES, BUILT-INS, COUNTERS, AND OTHER MATTERS OF DETAIL, INCLUDING, WITHOUT LIMITATION, ITEMS OF FINISH AND DECORATION, ARE CONCEPTUAL ONLY AND ARE NOT NECESSARILY INCLUDED IN EACH UNIT. THE FURNITURE PLAN AND THE USES OF SPACE ILLUSTRATED ARE SUGGESTED USES ONLY AND NOT INTENDED TO GUARANTY OR REPRESENT ANY SPECIFIC USE OF SPACE AND MAY NOT BE INCLUDED WITH A UNIT PURCHASE. CONSULT THE DEVELOPER'S PROSPECTUS WHICH WILL BE PROVIDED TO YOU BY THE DEVELOPER TO LEARN WHAT IS INCLUDED WITH A UNIT PURCHASE AND TO REVIEW THE UNIT SQUARE FOOTAGE CALCULATION METHOD TO BE RELIED UPON. 9





MIDTOWN PARK

BY PROPER

*Residence  
02*

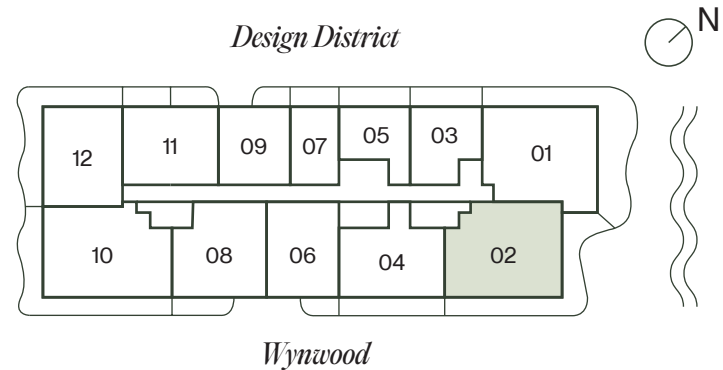
LUXURY RESIDENCES  
DESIGNED BY MEYER DAVIS STUDIO



Residence  
02

3 BEDROOMS | 3.5 BATHROOMS

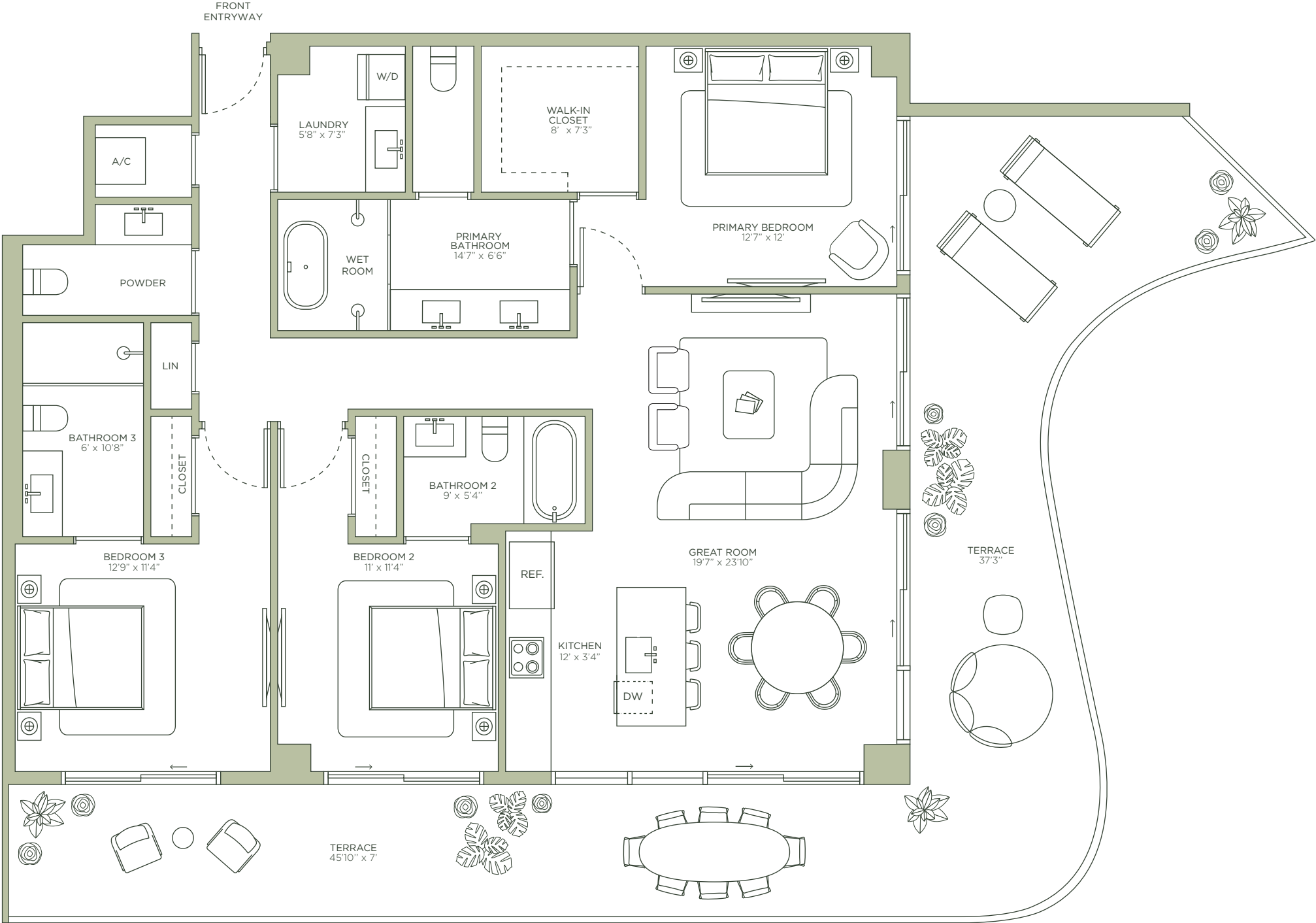
TOTAL	2,337 SQ FT   217 SQ M
INTERIOR	1616 SQ FT   150 SQ M
EXTERIOR	721 SQ FT   67 SQ M



MIDTOWN PARK

BY PROPER

LUXURY RESIDENCES  
DESIGNED BY MEYER DAVIS STUDIO



ROSSO Development



By PROPER ARQUITECTONICA



ORAL REPRESENTATIONS CANNOT BE RELIED UPON AS CORRECTLY STATING THE REPRESENTATIONS OF THE DEVELOPER. FOR CORRECT REPRESENTATIONS, REFERENCE SHOULD BE MADE TO THE DOCUMENTS REQUIRED BY SECTION 718.503, FLORIDA STATUTES, TO BE FURNISHED BY A DEVELOPER TO A BUYER. THE DIMENSIONS AND SQUARE FOOTAGE STATED FOR ANY DEPICTED UNIT FLOOR PLAN ARE APPROXIMATE. THERE ARE VARIOUS RECOGNIZED METHODS FOR CALCULATING THE SQUARE FOOTAGE OF A UNIT. THE SQUARE FOOTAGE STATED HEREIN IS CALCULATED FROM THE EXTERIOR BOUNDARIES OF THE EXTERIOR WALLS TO THE CENTERLINE OF INTERIOR DEMISING WALLS WITHOUT DEDUCTIONS FOR CUTOUTS, CURVES, OR ARCHITECTURAL FEATURES. THIS METHOD TYPICALLY RESULTS IN QUOTED DIMENSIONS GREATER THAN THE DIMENSIONS THAT WOULD BE DETERMINED BY USING OTHER ACCEPTED METHODS. ALL DIMENSIONS ARE APPROXIMATE AND MAY VARY WITH ACTUAL CONSTRUCTION, AND ALL FLOOR PLANS AND DEVELOPMENT PLANS ARE SUBJECT TO CHANGE. THE SIZE AND CONFIGURATION OF BALCONIES AND TERRACES AND WINDOWS MAY VARY THROUGHOUT THE BUILDING. THE ILLUSTRATIONS AND IMAGES ARE CONCEPTUAL. THE FLOOR PLAN, UNIT LAYOUT, LOCATIONS OF WINDOWS, DOORS, CLOSETS, PLUMBING FIXTURES, MECHANICAL EQUIPMENT, APPLIANCES, STRUCTURAL ELEMENTS, ARCHITECTURAL DESIGN ELEMENTS AND THE USES, CONFIGURATIONS, AND ENTRIES TO ROOMS MAY BE CHANGED BASED ON FINAL APPROVED PLANS, PERMITTING, AND COMPLETED CONSTRUCTION. ALL DEPICTIONS OF FURNISHINGS, APPLIANCES, BUILT-INS, COUNTERS, AND OTHER MATTERS OF DETAIL, INCLUDING, WITHOUT LIMITATION, ITEMS OF FINISH AND DECORATION, ARE CONCEPTUAL ONLY AND ARE NOT NECESSARILY INCLUDED IN EACH UNIT. THE FURNITURE PLAN AND THE USES OF SPACE ILLUSTRATED ARE SUGGESTED USES ONLY AND NOT INTENDED TO GUARANTY OR REPRESENT ANY SPECIFIC USE OF SPACE AND MAY NOT BE INCLUDED WITH A UNIT PURCHASE. CONSULT THE DEVELOPER'S PROSPECTUS WHICH WILL BE PROVIDED TO YOU BY THE DEVELOPER TO LEARN WHAT IS INCLUDED WITH A UNIT PURCHASE AND TO REVIEW THE UNIT SQUARE FOOTAGE CALCULATION METHOD TO BE RELIED UPON. 9





MIDTOWN PARK

BY PROPER

# *Residence 03*

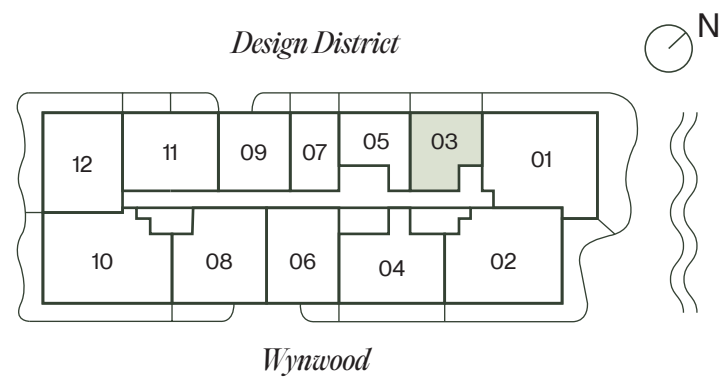
LUXURY RESIDENCES  
DESIGNED BY MEYER DAVIS STUDIO



# Residence 03

1 BEDROOM + DEN | 1 BATHROOM

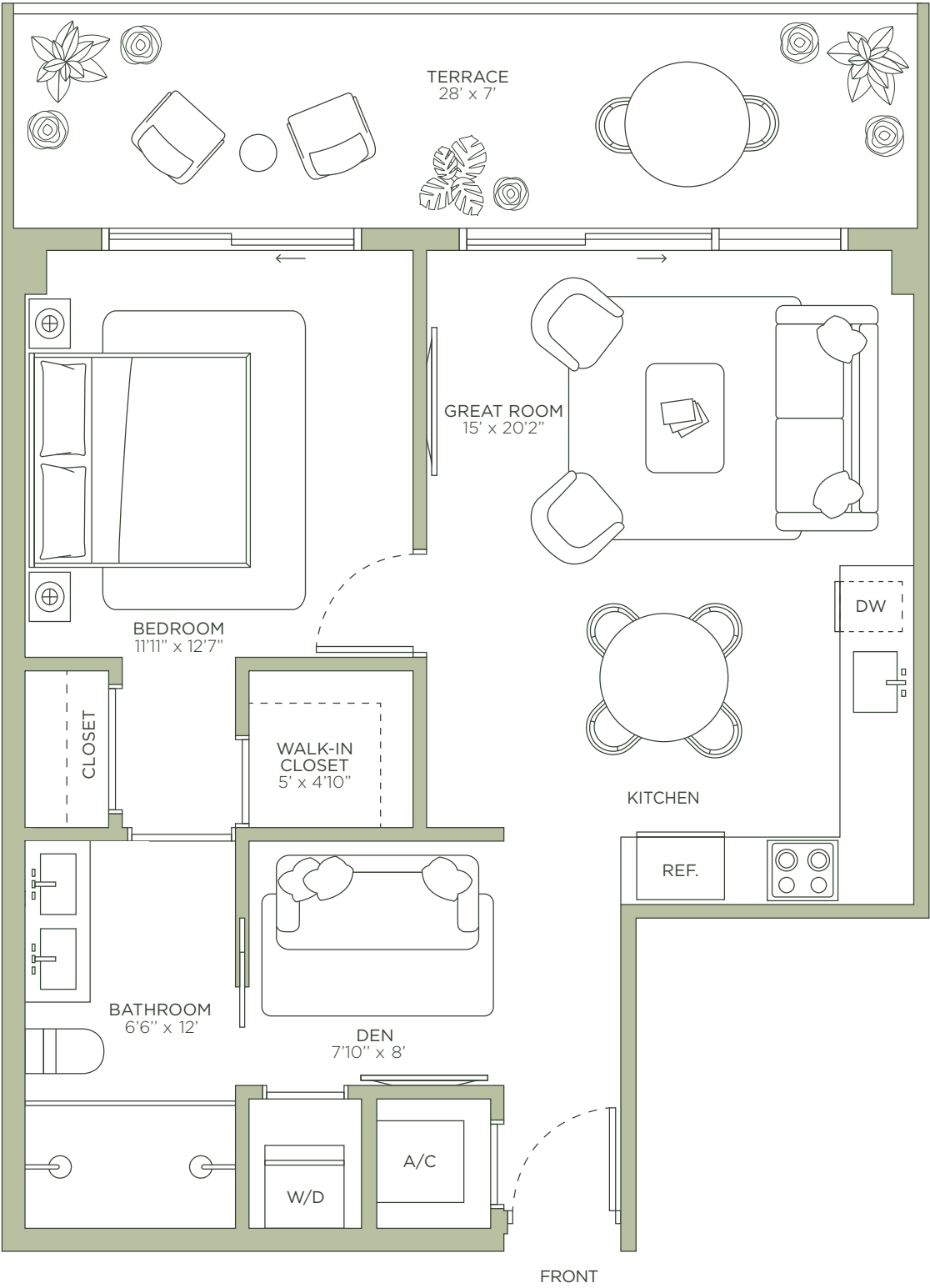
TOTAL	998 SQ FT   91 SQ M
INTERIOR	782 SQ FT   73 SQ M
EXTERIOR	196 SQ FT   18 SQ M



MIDTOWN PARK

BY PROPER

LUXURY RESIDENCES  
DESIGNED BY MEYER DAVIS STUDIO



ROSSO Development By PROPER ARQUITECTONICA MD MEYERDAVIS

ORAL REPRESENTATIONS CANNOT BE RELIED UPON AS CORRECTLY STATING THE REPRESENTATIONS OF THE DEVELOPER. FOR CORRECT REPRESENTATIONS, REFERENCE SHOULD BE MADE TO THE DOCUMENTS REQUIRED BY SECTION 718.503, FLORIDA STATUTES, TO BE FURNISHED BY A DEVELOPER TO A BUYER. THE DIMENSIONS AND SQUARE FOOTAGE STATED FOR ANY DEPICTED UNIT FLOOR PLAN ARE APPROXIMATE. THERE ARE VARIOUS RECOGNIZED METHODS FOR CALCULATING THE SQUARE FOOTAGE OF A UNIT. THE SQUARE FOOTAGE STATED HEREIN IS CALCULATED FROM THE EXTERIOR BOUNDARIES OF THE EXTERIOR WALLS TO THE CENTERLINE OF INTERIOR DEMISING WALLS WITHOUT DEDUCTIONS FOR CUTOUTS, CURVES, OR ARCHITECTURAL FEATURES. THIS METHOD TYPICALLY RESULTS IN QUOTED DIMENSIONS GREATER THAN THE DIMENSIONS THAT WOULD BE DETERMINED BY USING OTHER ACCEPTED METHODS. ALL DIMENSIONS ARE APPROXIMATE AND MAY VARY WITH ACTUAL CONSTRUCTION, AND ALL FLOOR PLANS AND DEVELOPMENT PLANS ARE SUBJECT TO CHANGE. THE SIZE AND CONFIGURATION OF BALCONIES AND TERRACES AND WINDOWS MAY VARY THROUGHOUT THE BUILDING. THE ILLUSTRATIONS AND IMAGES ARE CONCEPTUAL. THE FLOOR PLAN, UNIT LAYOUT, LOCATIONS OF WINDOWS, DOORS, CLOSETS, PLUMBING FIXTURES, MECHANICAL EQUIPMENT, APPLIANCES, STRUCTURAL ELEMENTS, ARCHITECTURAL DESIGN ELEMENTS AND THE USES, CONFIGURATIONS, AND ENTRIES TO ROOMS MAY BE CHANGED BASED ON FINAL APPROVED PLANS, PERMITTING, AND COMPLETED CONSTRUCTION. ALL DEPICTIONS OF FURNISHINGS, APPLIANCES, BUILT-INS, COUNTERS, AND OTHER MATTERS OF DETAIL, INCLUDING, WITHOUT LIMITATION, ITEMS OF FINISH AND DECORATION, ARE CONCEPTUAL ONLY AND ARE NOT NECESSARILY INCLUDED IN EACH UNIT. THE FURNITURE PLAN AND THE USES OF SPACE ILLUSTRATED ARE SUGGESTED USES ONLY AND NOT INTENDED TO GUARANTY OR REPRESENT ANY SPECIFIC USE OF SPACE AND MAY NOT BE INCLUDED WITH A UNIT PURCHASE. CONSULT THE DEVELOPER'S PROSPECTUS WHICH WILL BE PROVIDED TO YOU BY THE DEVELOPER TO LEARN WHAT IS INCLUDED WITH A UNIT PURCHASE AND TO REVIEW THE UNIT SQUARE FOOTAGE CALCULATION METHOD TO BE RELIED UPON. 9





MIDTOWN PARK

BY PROPER

# *Residence 04*

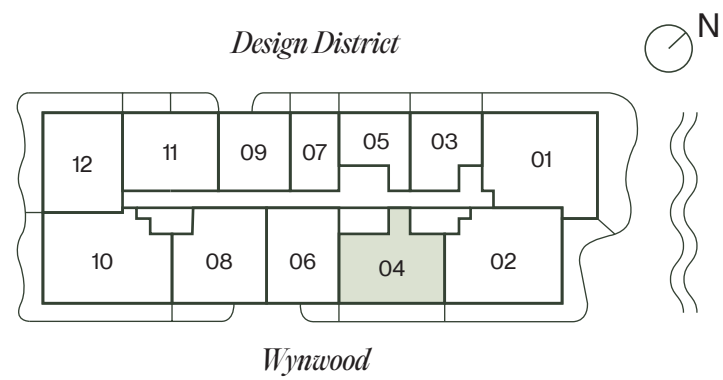
LUXURY RESIDENCES  
DESIGNED BY MEYER DAVIS STUDIO



# Residence 04

2 BEDROOMS + DEN | 2 BATHROOMS

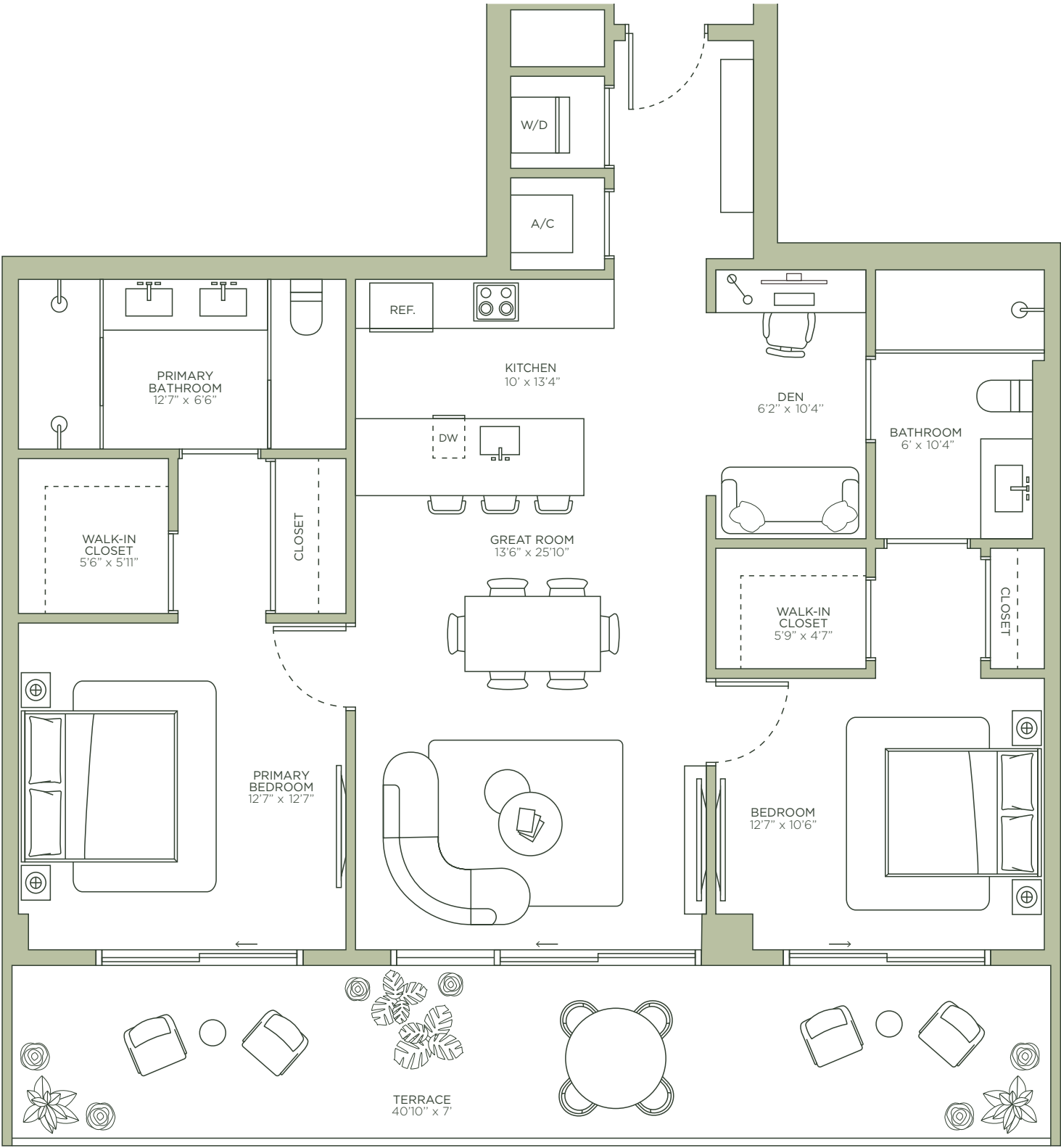
TOTAL	1,454 SQ FT   136 SQ M
INTERIOR	1,168 SQ FT   109 SQ M
EXTERIOR	286 SQ FT   27 SQ M



MIDTOWN PARK

BY PROPER

LUXURY RESIDENCES  
DESIGNED BY MEYER DAVIS STUDIO



ROSSO Development



By PROPER ARQUITECTONICA



ORAL REPRESENTATIONS CANNOT BE RELIED UPON AS CORRECTLY STATING THE REPRESENTATIONS OF THE DEVELOPER. FOR CORRECT REPRESENTATIONS, REFERENCE SHOULD BE MADE TO THE DOCUMENTS REQUIRED BY SECTION 718.503, FLORIDA STATUTES, TO BE FURNISHED BY A DEVELOPER TO A BUYER. THE DIMENSIONS AND SQUARE FOOTAGE STATED FOR ANY DEPICTED UNIT FLOOR PLAN ARE APPROXIMATE. THERE ARE VARIOUS RECOGNIZED METHODS FOR CALCULATING THE SQUARE FOOTAGE OF A UNIT. THE SQUARE FOOTAGE STATED HEREIN IS CALCULATED FROM THE EXTERIOR BOUNDARIES OF THE EXTERIOR WALLS TO THE CENTERLINE OF INTERIOR DEMISING WALLS WITHOUT DEDUCTIONS FOR CUTOUTS, CURVES, OR ARCHITECTURAL FEATURES. THIS METHOD TYPICALLY RESULTS IN QUOTED DIMENSIONS GREATER THAN THE DIMENSIONS THAT WOULD BE DETERMINED BY USING OTHER ACCEPTED METHODS. ALL DIMENSIONS ARE APPROXIMATE AND MAY VARY WITH ACTUAL CONSTRUCTION, AND ALL FLOOR PLANS AND DEVELOPMENT PLANS ARE SUBJECT TO CHANGE. THE SIZE AND CONFIGURATION OF BALCONIES AND TERRACES AND WINDOWS MAY VARY THROUGHOUT THE BUILDING. THE ILLUSTRATIONS AND IMAGES ARE CONCEPTUAL. THE FLOOR PLAN, UNIT LAYOUT, LOCATIONS OF WINDOWS, DOORS, CLOSETS, PLUMBING FIXTURES, MECHANICAL EQUIPMENT, APPLIANCES, STRUCTURAL ELEMENTS, ARCHITECTURAL DESIGN ELEMENTS AND THE USES, CONFIGURATIONS, AND ENTRIES TO ROOMS MAY BE CHANGED BASED ON FINAL APPROVED PLANS, PERMITTING, AND COMPLETED CONSTRUCTION. ALL DEPICTIONS OF FURNISHINGS, APPLIANCES, BUILT-INS, COUNTERS, AND OTHER MATTERS OF DETAIL, INCLUDING, WITHOUT LIMITATION, ITEMS OF FINISH AND DECORATION, ARE CONCEPTUAL ONLY AND ARE NOT NECESSARILY INCLUDED IN EACH UNIT. THE FURNITURE PLAN AND THE USES OF SPACE ILLUSTRATED ARE SUGGESTED USES ONLY AND NOT INTENDED TO GUARANTEE OR REPRESENT ANY SPECIFIC USE OF SPACE AND MAY NOT BE INCLUDED WITH A UNIT PURCHASE. CONSULT THE DEVELOPER'S PROSPECTUS WHICH WILL BE PROVIDED TO YOU BY THE DEVELOPER TO LEARN WHAT IS INCLUDED WITH A UNIT PURCHASE AND TO REVIEW THE UNIT SQUARE FOOTAGE CALCULATION METHOD TO BE RELIED UPON. 9





MIDTOWN PARK

BY PROPER

Mediterranean

*Residence*  
*05*

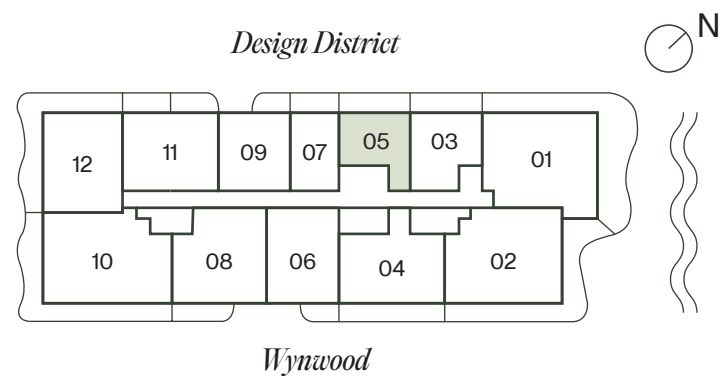
LUXURY RESIDENCES  
DESIGNED BY MEYER DAVIS STUDIO



Residence  
05

1 BEDROOM | 1 BATHROOM

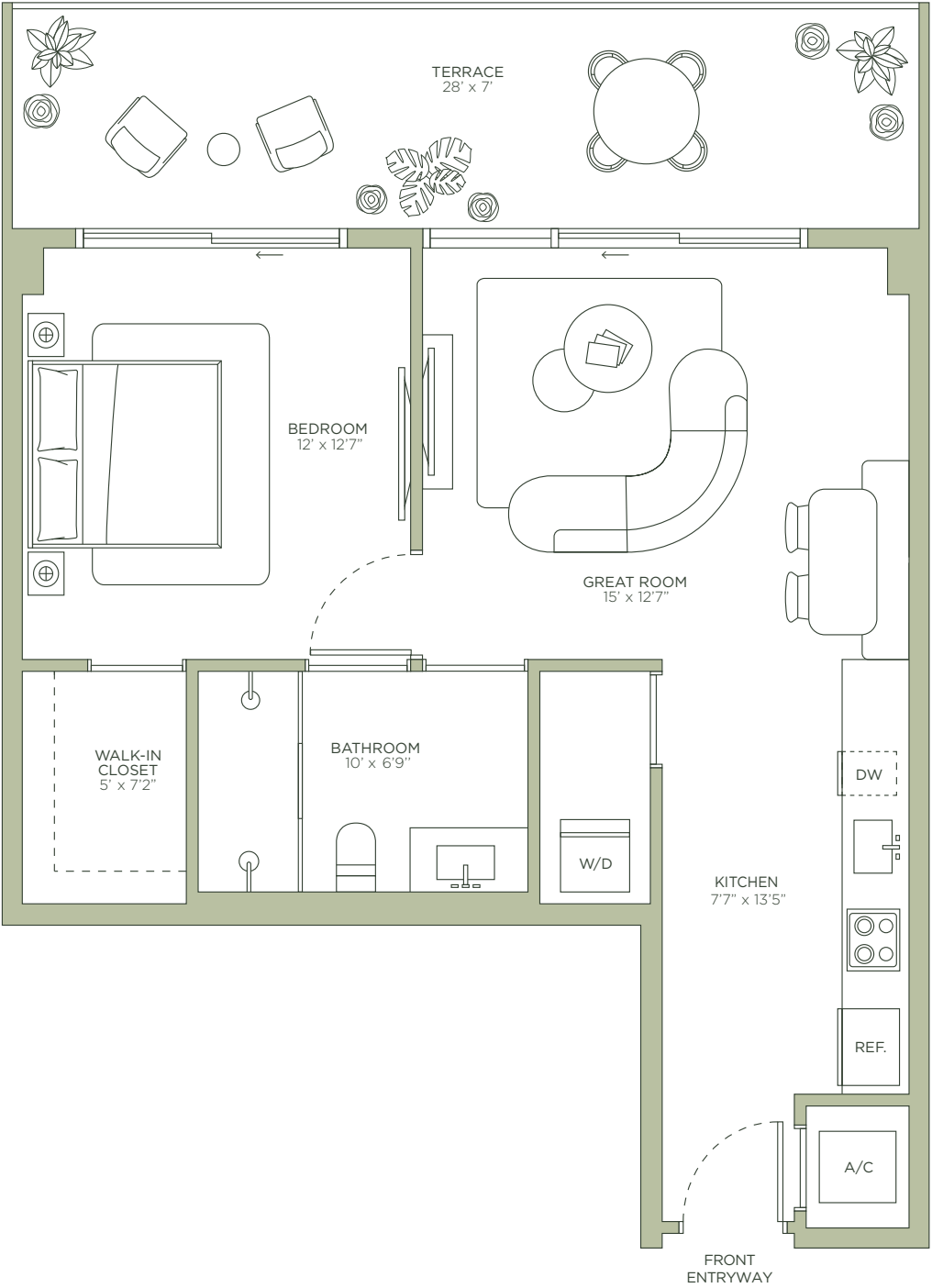
TOTAL	866 SQ FT   80 SQ M
INTERIOR	670 SQ FT   62 SQ M
EXTERIOR	196 SQ FT   18 SQ M



MIDTOWN PARK

BY PROPER

LUXURY RESIDENCES  
DESIGNED BY MEYER DAVIS STUDIO



ROSSO Development



By PROPER ARQUITECTONICA



ORAL REPRESENTATIONS CANNOT BE RELIED UPON AS CORRECTLY STATING THE REPRESENTATIONS OF THE DEVELOPER. FOR CORRECT REPRESENTATIONS, REFERENCE SHOULD BE MADE TO THE DOCUMENTS REQUIRED BY SECTION 718.503, FLORIDA STATUTES, TO BE FURNISHED BY A DEVELOPER TO A BUYER. THE DIMENSIONS AND SQUARE FOOTAGE STATED FOR ANY DEPICTED UNIT FLOOR PLAN ARE APPROXIMATE. THERE ARE VARIOUS RECOGNIZED METHODS FOR CALCULATING THE SQUARE FOOTAGE OF A UNIT. THE SQUARE FOOTAGE STATED HEREIN IS CALCULATED FROM THE EXTERIOR BOUNDARIES OF THE EXTERIOR WALLS TO THE CENTERLINE OF INTERIOR DEMISING WALLS WITHOUT DEDUCTIONS FOR CUTOUTS, CURVES, OR ARCHITECTURAL FEATURES. THIS METHOD TYPICALLY RESULTS IN QUOTED DIMENSIONS GREATER THAN THE DIMENSIONS THAT WOULD BE DETERMINED BY USING OTHER ACCEPTED METHODS. ALL DIMENSIONS ARE APPROXIMATE AND MAY VARY WITH ACTUAL CONSTRUCTION, AND ALL FLOOR PLANS AND DEVELOPMENT PLANS ARE SUBJECT TO CHANGE. THE SIZE AND CONFIGURATION OF BALCONIES AND TERRACES AND WINDOWS MAY VARY THROUGHOUT THE BUILDING. THE ILLUSTRATIONS AND IMAGES ARE CONCEPTUAL. THE FLOOR PLAN, UNIT LAYOUT, LOCATIONS OF WINDOWS, DOORS, CLOSETS, PLUMBING FIXTURES, MECHANICAL EQUIPMENT, APPLIANCES, STRUCTURAL ELEMENTS, ARCHITECTURAL DESIGN ELEMENTS AND THE USES, CONFIGURATIONS, AND ENTRIES TO ROOMS MAY BE CHANGED BASED ON FINAL APPROVED PLANS, PERMITTING, AND COMPLETED CONSTRUCTION. ALL DEPICTIONS OF FURNISHINGS, APPLIANCES, BUILT-INS, COUNTERS, AND OTHER MATTERS OF DETAIL, INCLUDING, WITHOUT LIMITATION, ITEMS OF FINISH AND DECORATION, ARE CONCEPTUAL ONLY AND ARE NOT NECESSARILY INCLUDED IN EACH UNIT. THE FURNITURE PLAN AND THE USES OF SPACE ILLUSTRATED ARE SUGGESTED USES ONLY AND NOT INTENDED TO GUARANTY OR REPRESENT ANY SPECIFIC USE OF SPACE AND MAY NOT BE INCLUDED WITH A UNIT PURCHASE. CONSULT THE DEVELOPER'S PROSPECTUS WHICH WILL BE PROVIDED TO YOU BY THE DEVELOPER TO LEARN WHAT IS INCLUDED WITH A UNIT PURCHASE AND TO REVIEW THE UNIT SQUARE FOOTAGE CALCULATION METHOD TO BE RELIED UPON. 9





MIDTOWN PARK

BY PROPER

# *Residence 06*

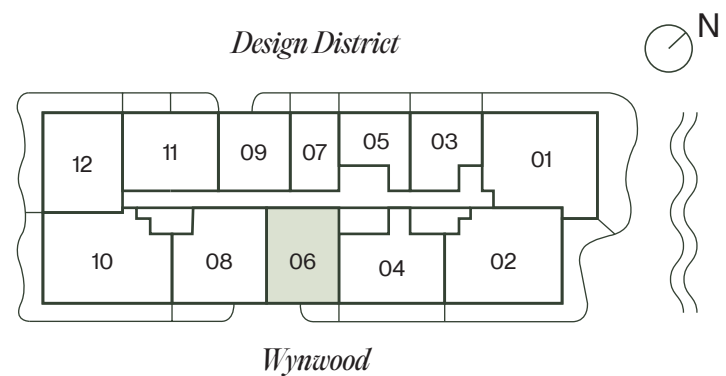
LUXURY RESIDENCES  
DESIGNED BY MEYER DAVIS STUDIO



# Residence 06

1 BEDROOM + DEN | 2 BATHROOMS

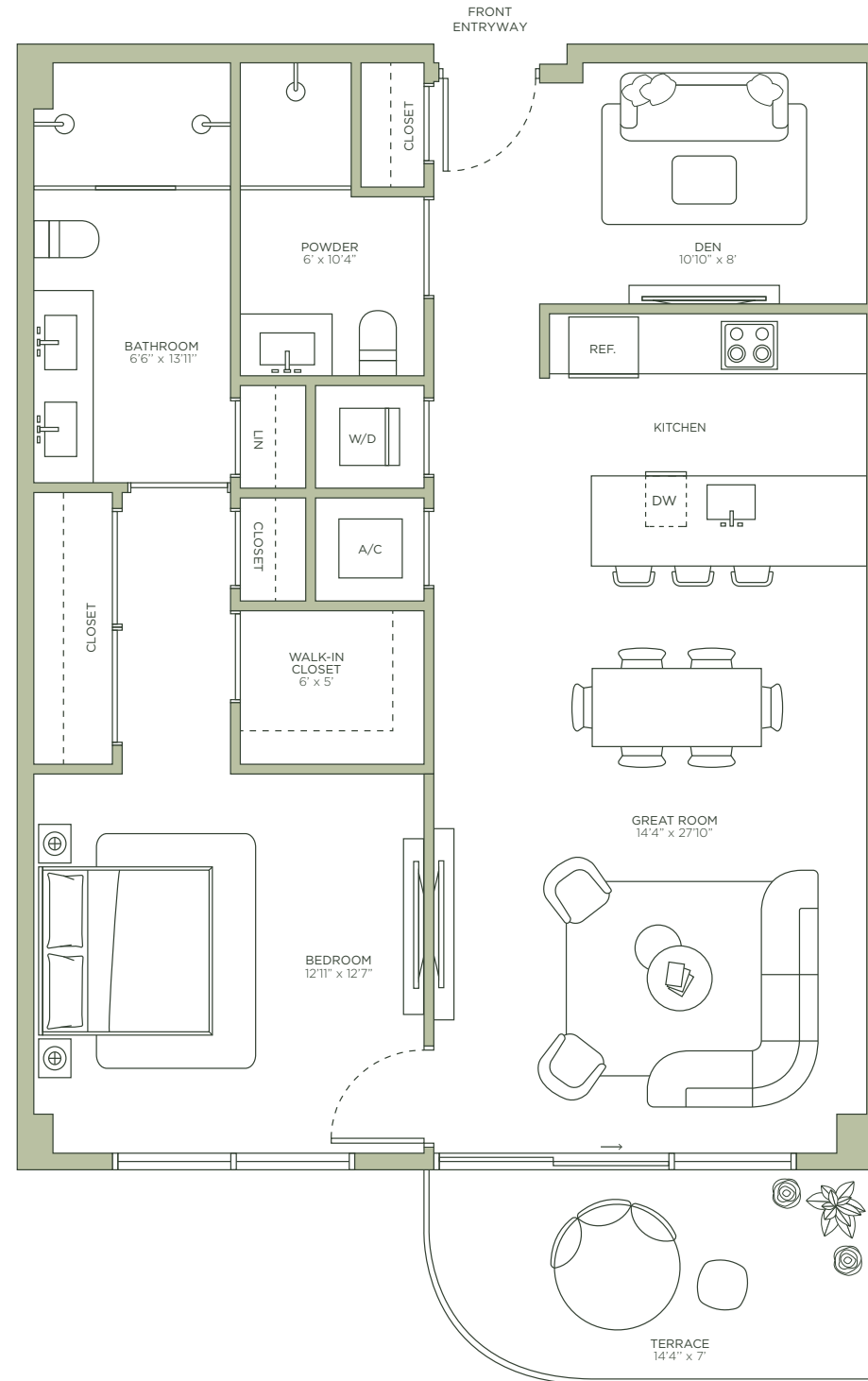
TOTAL	1,160 SQ FT   107 SQ M
INTERIOR	1,060 SQ FT   98 SQ M
EXTERIOR	100 SQ FT   9 SQ M



## MIDTOWN PARK

BY PROPER

LUXURY RESIDENCES  
DESIGNED BY MEYER DAVIS STUDIO



ROSSO Development



By **PROPER** *ARQUITECTONICA*



ORAL REPRESENTATIONS CANNOT BE RELIED UPON AS CORRECTLY STATING THE REPRESENTATIONS OF THE DEVELOPER. FOR CORRECT REPRESENTATIONS, REFERENCE SHOULD BE MADE TO THE DOCUMENTS REQUIRED BY SECTION 718.503, FLORIDA STATUTES, TO BE FURNISHED BY A DEVELOPER TO A BUYER. THE DIMENSIONS AND SQUARE FOOTAGE STATED FOR ANY DEPICTED UNIT FLOOR PLAN ARE APPROXIMATE. THERE ARE VARIOUS RECOGNIZED METHODS FOR CALCULATING THE SQUARE FOOTAGE OF A UNIT. THE SQUARE FOOTAGE STATED HEREIN IS CALCULATED FROM THE EXTERIOR BOUNDARIES OF THE EXTERIOR WALLS TO THE CENTERLINE OF INTERIOR DEMISING WALLS WITHOUT DEDUCTIONS FOR CUTOUTS, CURVES, OR ARCHITECTURAL FEATURES. THIS METHOD TYPICALLY RESULTS IN QUOTED DIMENSIONS GREATER THAN THE DIMENSIONS THAT WOULD BE DETERMINED BY USING OTHER ACCEPTED METHODS. ALL DIMENSIONS ARE APPROXIMATE AND MAY VARY WITH ACTUAL CONSTRUCTION, AND ALL FLOOR PLANS AND DEVELOPMENT PLANS ARE SUBJECT TO CHANGE. THE SIZE AND CONFIGURATION OF BALCONIES AND TERRACES AND WINDOWS MAY VARY THROUGHOUT THE BUILDING. THE ILLUSTRATIONS AND IMAGES ARE CONCEPTUAL. THE FLOOR PLAN, UNIT LAYOUT, LOCATIONS OF WINDOWS, DOORS, CLOSETS, PLUMBING FIXTURES, MECHANICAL EQUIPMENT, APPLIANCES, STRUCTURAL ELEMENTS, ARCHITECTURAL DESIGN ELEMENTS AND THE USES, CONFIGURATIONS, AND ENTRIES TO ROOMS MAY BE CHANGED BASED ON FINAL APPROVED PLANS, PERMITTING, AND COMPLETED CONSTRUCTION. ALL DEPICTIONS OF FURNISHINGS, APPLIANCES, BUILT-INS, COUNTERS, AND OTHER MATTERS OF DETAIL, INCLUDING, WITHOUT LIMITATION, ITEMS OF FINISH AND DECORATION, ARE CONCEPTUAL ONLY AND ARE NOT NECESSARILY INCLUDED IN EACH UNIT. THE FURNITURE PLAN AND THE USES OF SPACE ILLUSTRATED ARE SUGGESTED USES ONLY AND NOT INTENDED TO GUARANTY OR REPRESENT ANY SPECIFIC USE OF SPACE AND MAY NOT BE INCLUDED WITH A UNIT PURCHASE. CONSULT THE DEVELOPER'S PROSPECTUS WHICH WILL BE PROVIDED TO YOU BY THE DEVELOPER TO LEARN WHAT IS INCLUDED WITH A UNIT PURCHASE AND TO REVIEW THE UNIT SQUARE FOOTAGE CALCULATION METHOD TO BE RELIED UPON. 9





MIDTOWN PARK

BY PROPER

*Residence*  
*07*

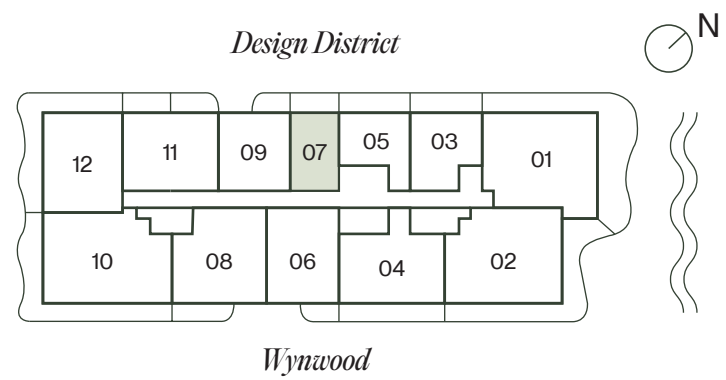
LUXURY RESIDENCES  
DESIGNED BY MEYER DAVIS STUDIO



# Residence 07

JR SUITE | 1 BATHROOM

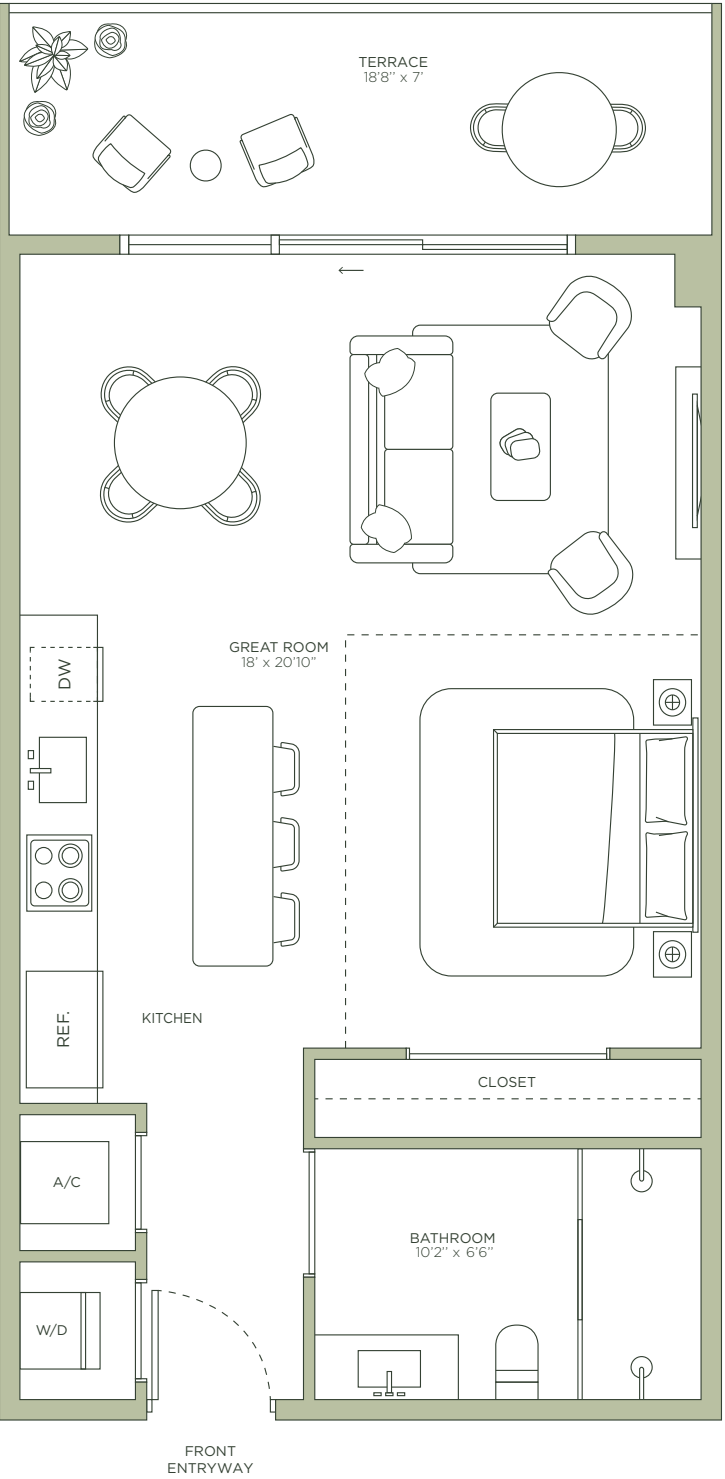
TOTAL	718 SQ FT   77 SQ M
INTERIOR	588 SQ FT   55 SQ M
EXTERIOR	130 SQ FT   12 SQ M



MIDTOWN PARK

BY PROPER

LUXURY RESIDENCES  
DESIGNED BY MEYER DAVIS STUDIO



ROSSO Development



By PROPER ARQUITECTONICA



ORAL REPRESENTATIONS CANNOT BE RELIED UPON AS CORRECTLY STATING THE REPRESENTATIONS OF THE DEVELOPER. FOR CORRECT REPRESENTATIONS, REFERENCE SHOULD BE MADE TO THE DOCUMENTS REQUIRED BY SECTION 718.503, FLORIDA STATUTES, TO BE FURNISHED BY A DEVELOPER TO A BUYER. THE DIMENSIONS AND SQUARE FOOTAGE STATED FOR ANY DEPICTED UNIT FLOOR PLAN ARE APPROXIMATE. THERE ARE VARIOUS RECOGNIZED METHODS FOR CALCULATING THE SQUARE FOOTAGE OF A UNIT. THE SQUARE FOOTAGE STATED HEREIN IS CALCULATED FROM THE EXTERIOR BOUNDARIES OF THE EXTERIOR WALLS TO THE CENTERLINE OF INTERIOR DEMISING WALLS WITHOUT DEDUCTIONS FOR CUTOUTS, CURVES, OR ARCHITECTURAL FEATURES. THIS METHOD TYPICALLY RESULTS IN QUOTED DIMENSIONS GREATER THAN THE DIMENSIONS THAT WOULD BE DETERMINED BY USING OTHER ACCEPTED METHODS. ALL DIMENSIONS ARE APPROXIMATE AND MAY VARY WITH ACTUAL CONSTRUCTION, AND ALL FLOOR PLANS AND DEVELOPMENT PLANS ARE SUBJECT TO CHANGE. THE SIZE AND CONFIGURATION OF BALCONIES AND TERRACES AND WINDOWS MAY VARY THROUGHOUT THE BUILDING. THE ILLUSTRATIONS AND IMAGES ARE CONCEPTUAL. THE FLOOR PLAN, UNIT LAYOUT, LOCATIONS OF WINDOWS, DOORS, CLOSETS, PLUMBING FIXTURES, MECHANICAL EQUIPMENT, APPLIANCES, STRUCTURAL ELEMENTS, ARCHITECTURAL DESIGN ELEMENTS AND THE USES, CONFIGURATIONS, AND ENTRIES TO ROOMS MAY BE CHANGED BASED ON FINAL APPROVED PLANS, PERMITTING, AND COMPLETED CONSTRUCTION. ALL DEPICTIONS OF FURNISHINGS, APPLIANCES, BUILT-INS, COUNTERS, AND OTHER MATTERS OF DETAIL, INCLUDING, WITHOUT LIMITATION, ITEMS OF FINISH AND DECORATION, ARE CONCEPTUAL ONLY AND ARE NOT NECESSARILY INCLUDED IN EACH UNIT. THE FURNITURE PLAN AND THE USES OF SPACE ILLUSTRATED ARE SUGGESTED USES ONLY AND NOT INTENDED TO GUARANTY OR REPRESENT ANY SPECIFIC USE OF SPACE AND MAY NOT BE INCLUDED WITH A UNIT PURCHASE. CONSULT THE DEVELOPER'S PROSPECTUS WHICH WILL BE PROVIDED TO YOU BY THE DEVELOPER TO LEARN WHAT IS INCLUDED WITH A UNIT PURCHASE AND TO REVIEW THE UNIT SQUARE FOOTAGE CALCULATION METHOD TO BE RELIED UPON. 9





MIDTOWN PARK

BY PROPER

# *Residence 08*

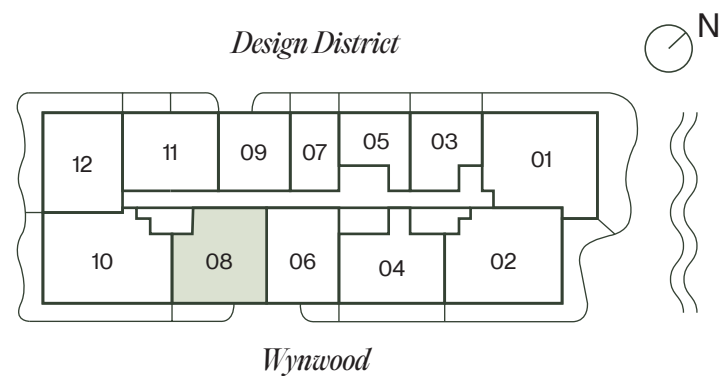
LUXURY RESIDENCES  
DESIGNED BY MEYER DAVIS STUDIO



# Residence 08

2 BEDROOMS + DEN | 3 BATHROOMS

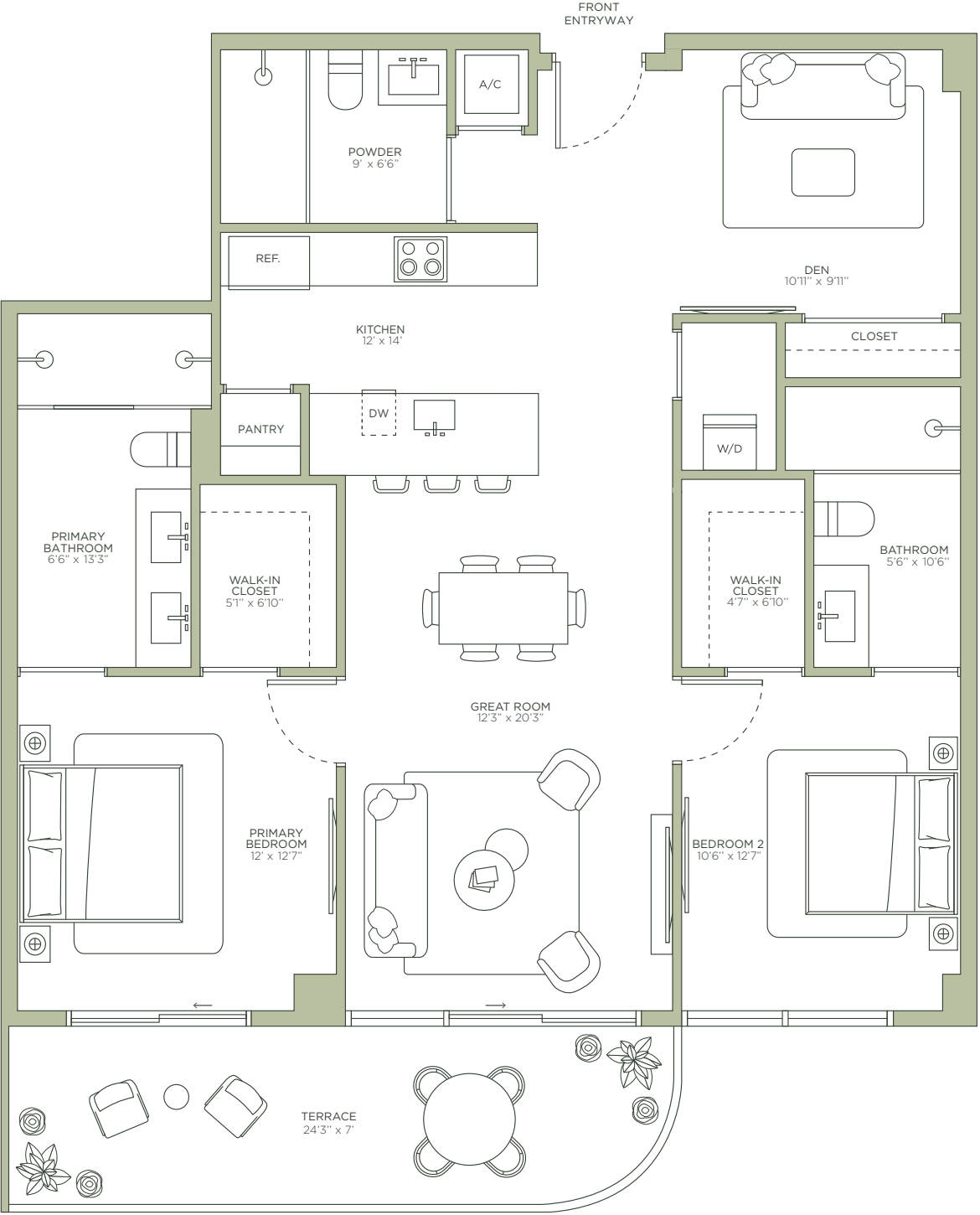
TOTAL	1,453 SQ FT   135 SQ M
INTERIOR	1,275 SQ FT   119 SQ M
EXTERIOR	178 SQ FT   16 SQ M



MIDTOWN PARK

BY PROPER

LUXURY RESIDENCES  
DESIGNED BY MEYER DAVIS STUDIO



ROSSO Development



By PROPER ARQUITECTONICA



ORAL REPRESENTATIONS CANNOT BE RELIED UPON AS CORRECTLY STATING THE REPRESENTATIONS OF THE DEVELOPER. FOR CORRECT REPRESENTATIONS, REFERENCE SHOULD BE MADE TO THE DOCUMENTS REQUIRED BY SECTION 718.503, FLORIDA STATUTES, TO BE FURNISHED BY A DEVELOPER TO A BUYER. THE DIMENSIONS AND SQUARE FOOTAGE STATED FOR ANY DEPICTED UNIT FLOOR PLAN ARE APPROXIMATE. THERE ARE VARIOUS RECOGNIZED METHODS FOR CALCULATING THE SQUARE FOOTAGE OF A UNIT. THE SQUARE FOOTAGE STATED HEREIN IS CALCULATED FROM THE EXTERIOR BOUNDARIES OF THE EXTERIOR WALLS TO THE CENTERLINE OF INTERIOR DEMISING WALLS WITHOUT DEDUCTIONS FOR CUTOUTS, CURVES, OR ARCHITECTURAL FEATURES. THIS METHOD TYPICALLY RESULTS IN QUOTED DIMENSIONS GREATER THAN THE DIMENSIONS THAT WOULD BE DETERMINED BY USING OTHER ACCEPTED METHODS. ALL DIMENSIONS ARE APPROXIMATE AND MAY VARY WITH ACTUAL CONSTRUCTION, AND ALL FLOOR PLANS AND DEVELOPMENT PLANS ARE SUBJECT TO CHANGE. THE SIZE AND CONFIGURATION OF BALCONIES AND TERRACES AND WINDOWS MAY VARY THROUGHOUT THE BUILDING. THE ILLUSTRATIONS AND IMAGES ARE CONCEPTUAL. THE FLOOR PLAN, UNIT LAYOUT, LOCATIONS OF WINDOWS, DOORS, CLOSETS, PLUMBING FIXTURES, MECHANICAL EQUIPMENT, APPLIANCES, STRUCTURAL ELEMENTS, ARCHITECTURAL DESIGN ELEMENTS AND THE USES, CONFIGURATIONS, AND ENTRIES TO ROOMS MAY BE CHANGED BASED ON FINAL APPROVED PLANS, PERMITTING, AND COMPLETED CONSTRUCTION. ALL DEPICTIONS OF FURNISHINGS, APPLIANCES, BUILT-INS, COUNTERS, AND OTHER MATTERS OF DETAIL, INCLUDING, WITHOUT LIMITATION, ITEMS OF FINISH AND DECORATION, ARE CONCEPTUAL ONLY AND ARE NOT NECESSARILY INCLUDED IN EACH UNIT. THE FURNITURE PLAN AND THE USES OF SPACE ILLUSTRATED ARE SUGGESTED USES ONLY AND NOT INTENDED TO GUARANTY OR REPRESENT ANY SPECIFIC USE OF SPACE AND MAY NOT BE INCLUDED WITH A UNIT PURCHASE. CONSULT THE DEVELOPER'S PROSPECTUS WHICH WILL BE PROVIDED TO YOU BY THE DEVELOPER TO LEARN WHAT IS INCLUDED WITH A UNIT PURCHASE AND TO REVIEW THE UNIT SQUARE FOOTAGE CALCULATION METHOD TO BE RELIED UPON. 9





MIDTOWN PARK

BY PROPER

*Residence  
09*

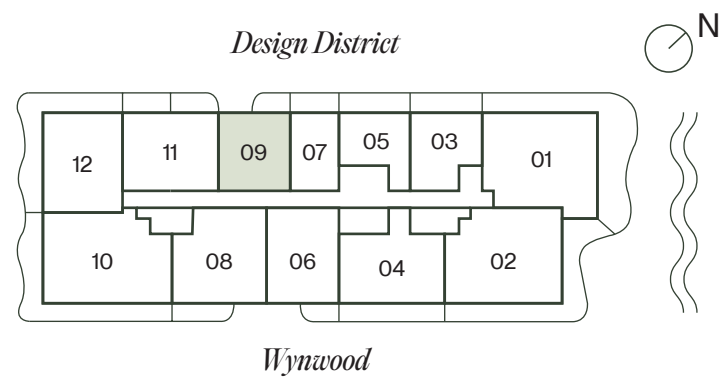
LUXURY RESIDENCES  
DESIGNED BY MEYER DAVIS STUDIO



# Residence 09

1 BEDROOMS + DEN | 2 BATHROOMS

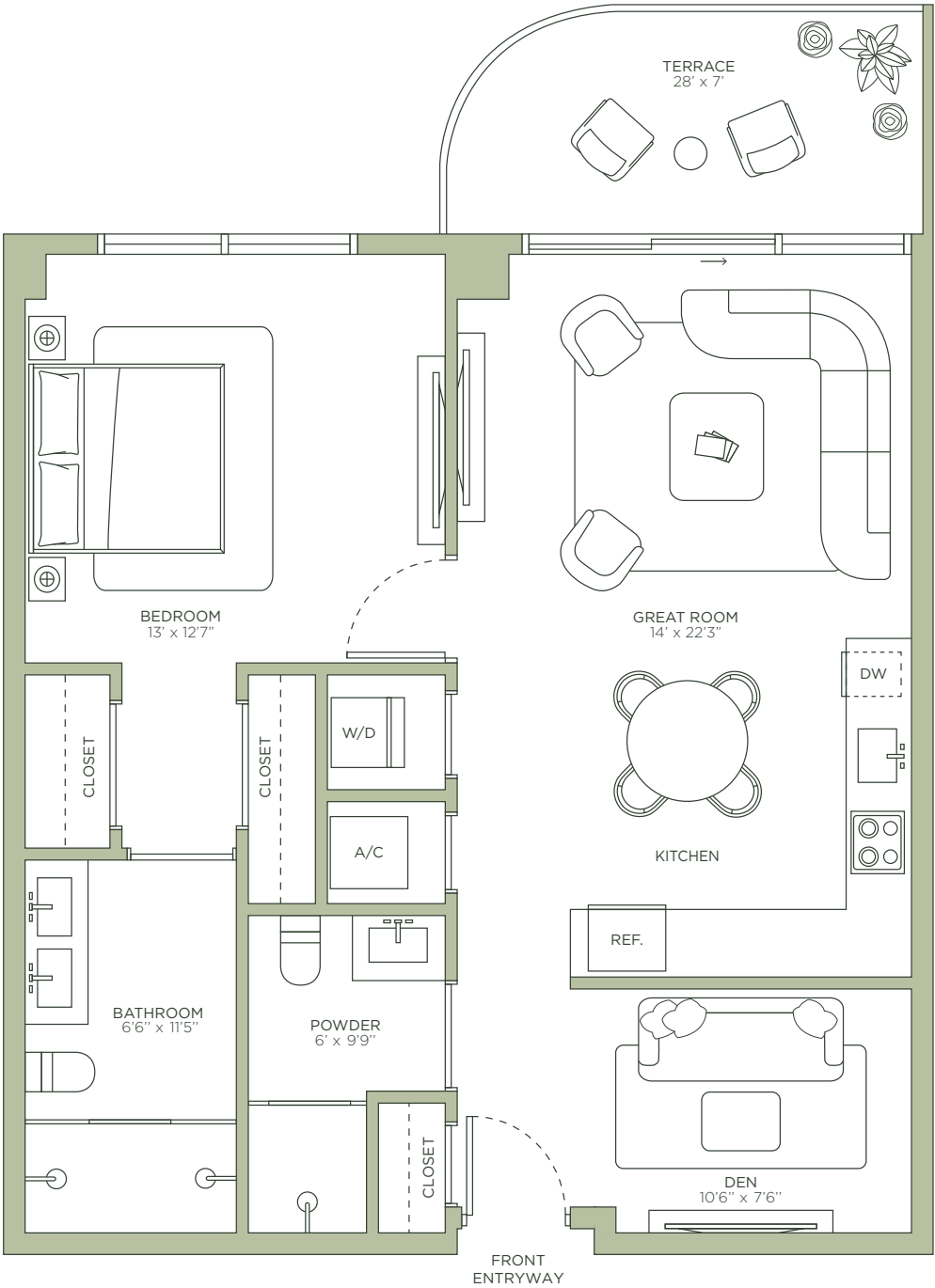
TOTAL	981 SQ FT   91 SQ M
INTERIOR	883 SQ FT   82 SQ M
EXTERIOR	98 SQ FT   9 SQ M



MIDTOWN PARK

BY PROPER

LUXURY RESIDENCES  
DESIGNED BY MEYER DAVIS STUDIO



ROSSO Development



By PROPER ARQUITECTONICA



ORAL REPRESENTATIONS CANNOT BE RELIED UPON AS CORRECTLY STATING THE REPRESENTATIONS OF THE DEVELOPER. FOR CORRECT REPRESENTATIONS, REFERENCE SHOULD BE MADE TO THE DOCUMENTS REQUIRED BY SECTION 718.503, FLORIDA STATUTES, TO BE FURNISHED BY A DEVELOPER TO A BUYER. THE DIMENSIONS AND SQUARE FOOTAGE STATED FOR ANY DEPICTED UNIT FLOOR PLAN ARE APPROXIMATE. THERE ARE VARIOUS RECOGNIZED METHODS FOR CALCULATING THE SQUARE FOOTAGE OF A UNIT. THE SQUARE FOOTAGE STATED HEREIN IS CALCULATED FROM THE EXTERIOR BOUNDARIES OF THE EXTERIOR WALLS TO THE CENTERLINE OF INTERIOR DEMISING WALLS WITHOUT DEDUCTIONS FOR CUTOUTS, CURVES, OR ARCHITECTURAL FEATURES. THIS METHOD TYPICALLY RESULTS IN QUOTED DIMENSIONS GREATER THAN THE DIMENSIONS THAT WOULD BE DETERMINED BY USING OTHER ACCEPTED METHODS. ALL DIMENSIONS ARE APPROXIMATE AND MAY VARY WITH ACTUAL CONSTRUCTION, AND ALL FLOOR PLANS AND DEVELOPMENT PLANS ARE SUBJECT TO CHANGE. THE SIZE AND CONFIGURATION OF BALCONIES AND TERRACES AND WINDOWS MAY VARY THROUGHOUT THE BUILDING. THE ILLUSTRATIONS AND IMAGES ARE CONCEPTUAL. THE FLOOR PLAN, UNIT LAYOUT, LOCATIONS OF WINDOWS, DOORS, CLOSETS, PLUMBING FIXTURES, MECHANICAL EQUIPMENT, APPLIANCES, STRUCTURAL ELEMENTS, ARCHITECTURAL DESIGN ELEMENTS AND THE USES, CONFIGURATIONS, AND ENTRIES TO ROOMS MAY BE CHANGED BASED ON FINAL APPROVED PLANS, PERMITTING, AND COMPLETED CONSTRUCTION. ALL DEPICTIONS OF FURNISHINGS, APPLIANCES, BUILT-INS, COUNTERS, AND OTHER MATTERS OF DETAIL, INCLUDING, WITHOUT LIMITATION, ITEMS OF FINISH AND DECORATION, ARE CONCEPTUAL ONLY AND ARE NOT NECESSARILY INCLUDED IN EACH UNIT. THE FURNITURE PLAN AND THE USES OF SPACE ILLUSTRATED ARE SUGGESTED USES ONLY AND NOT INTENDED TO GUARANTY OR REPRESENT ANY SPECIFIC USE OF SPACE AND MAY NOT BE INCLUDED WITH A UNIT PURCHASE. CONSULT THE DEVELOPER'S PROSPECTUS WHICH WILL BE PROVIDED TO YOU BY THE DEVELOPER TO LEARN WHAT IS INCLUDED WITH A UNIT PURCHASE AND TO REVIEW THE UNIT SQUARE FOOTAGE CALCULATION METHOD TO BE RELIED UPON. 9





MIDTOWN PARK

BY PROPER

# *Residence 10*

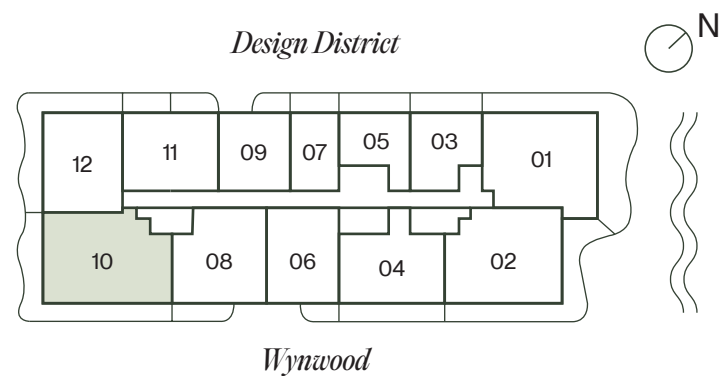
LUXURY RESIDENCES  
DESIGNED BY MEYER DAVIS STUDIO



Residence  
10

3 BEDROOMS | 3.5 BATHROOMS

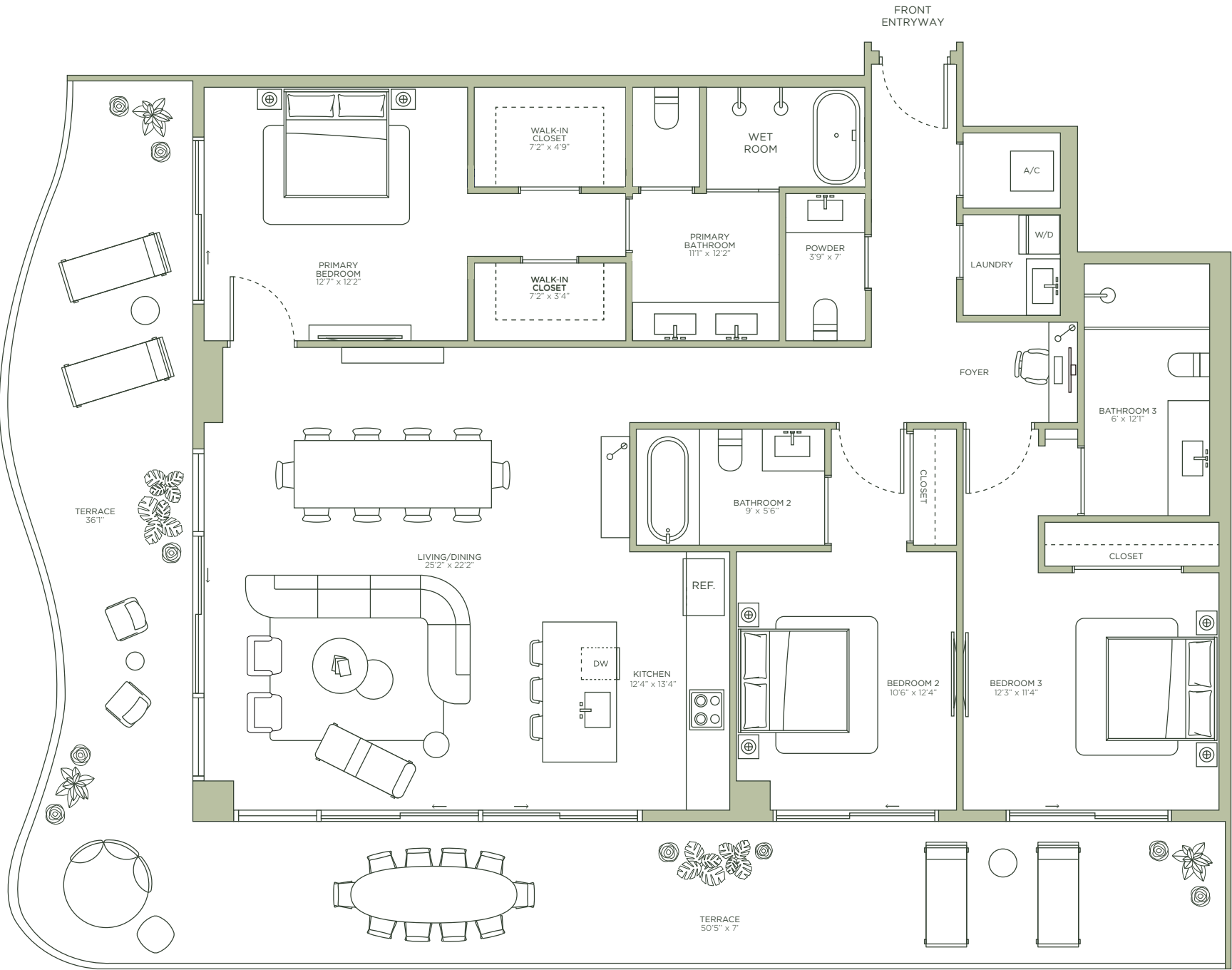
TOTAL	2,385 SQ FT   221 SQ M
INTERIOR	1,704 SQ FT   158 SQ M
EXTERIOR	681 SQ FT   63 SQ M



MIDTOWN PARK

BY PROPER

LUXURY RESIDENCES  
DESIGNED BY MEYER DAVIS STUDIO



ROSSO Development



By PROPER ARQUITECTONICA



ORAL REPRESENTATIONS CANNOT BE RELIED UPON AS CORRECTLY STATING THE REPRESENTATIONS OF THE DEVELOPER. FOR CORRECT REPRESENTATIONS, REFERENCE SHOULD BE MADE TO THE DOCUMENTS REQUIRED BY SECTION 718.503, FLORIDA STATUTES, TO BE FURNISHED BY A DEVELOPER TO A BUYER. THE DIMENSIONS AND SQUARE FOOTAGE STATED FOR ANY DEPICTED UNIT FLOOR PLAN ARE APPROXIMATE. THERE ARE VARIOUS RECOGNIZED METHODS FOR CALCULATING THE SQUARE FOOTAGE OF A UNIT. THE SQUARE FOOTAGE STATED HEREIN IS CALCULATED FROM THE EXTERIOR BOUNDARIES OF THE EXTERIOR WALLS TO THE CENTERLINE OF INTERIOR DEMISING WALLS WITHOUT DEDUCTIONS FOR CUTOUTS, CURVES, OR ARCHITECTURAL FEATURES. THIS METHOD TYPICALLY RESULTS IN QUOTED DIMENSIONS GREATER THAN THE DIMENSIONS THAT WOULD BE DETERMINED BY USING OTHER ACCEPTED METHODS. ALL DIMENSIONS ARE APPROXIMATE AND MAY VARY WITH ACTUAL CONSTRUCTION, AND ALL FLOOR PLANS AND DEVELOPMENT PLANS ARE SUBJECT TO CHANGE. THE SIZE AND CONFIGURATION OF BALCONIES AND TERRACES AND WINDOWS MAY VARY THROUGHOUT THE BUILDING. THE ILLUSTRATIONS AND IMAGES ARE CONCEPTUAL. THE FLOOR PLAN, UNIT LAYOUT, LOCATIONS OF WINDOWS, DOORS, CLOSETS, PLUMBING FIXTURES, MECHANICAL EQUIPMENT, APPLIANCES, STRUCTURAL ELEMENTS, ARCHITECTURAL DESIGN ELEMENTS AND THE USES, CONFIGURATIONS, AND ENTRIES TO ROOMS MAY BE CHANGED BASED ON FINAL APPROVED PLANS, PERMITTING, AND COMPLETED CONSTRUCTION. ALL DEPICTIONS OF FURNISHINGS, APPLIANCES, BUILT-INS, COUNTERS, AND OTHER MATTERS OF DETAIL, INCLUDING, WITHOUT LIMITATION, ITEMS OF FINISH AND DECORATION, ARE CONCEPTUAL ONLY AND ARE NOT NECESSARILY INCLUDED IN EACH UNIT. THE FURNITURE PLAN AND THE USES OF SPACE ILLUSTRATED ARE SUGGESTED USES ONLY AND NOT INTENDED TO GUARANTEE OR REPRESENT ANY SPECIFIC USE OF SPACE AND MAY NOT BE INCLUDED WITH A UNIT PURCHASE. CONSULT THE DEVELOPER'S PROSPECTUS WHICH WILL BE PROVIDED TO YOU BY THE DEVELOPER TO LEARN WHAT IS INCLUDED WITH A UNIT PURCHASE AND TO REVIEW THE UNIT SQUARE FOOTAGE CALCULATION METHOD TO BE RELIED UPON. 9





MIDTOWN PARK

BY PROPER

*Residence*  
**11**



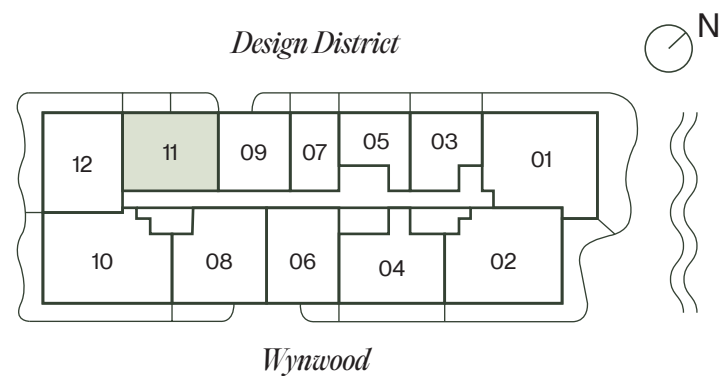
LUXURY RESIDENCES  
DESIGNED BY MEYER DAVIS STUDIO



# Residence 11

2 BEDROOMS + DEN | 2 BATHROOMS

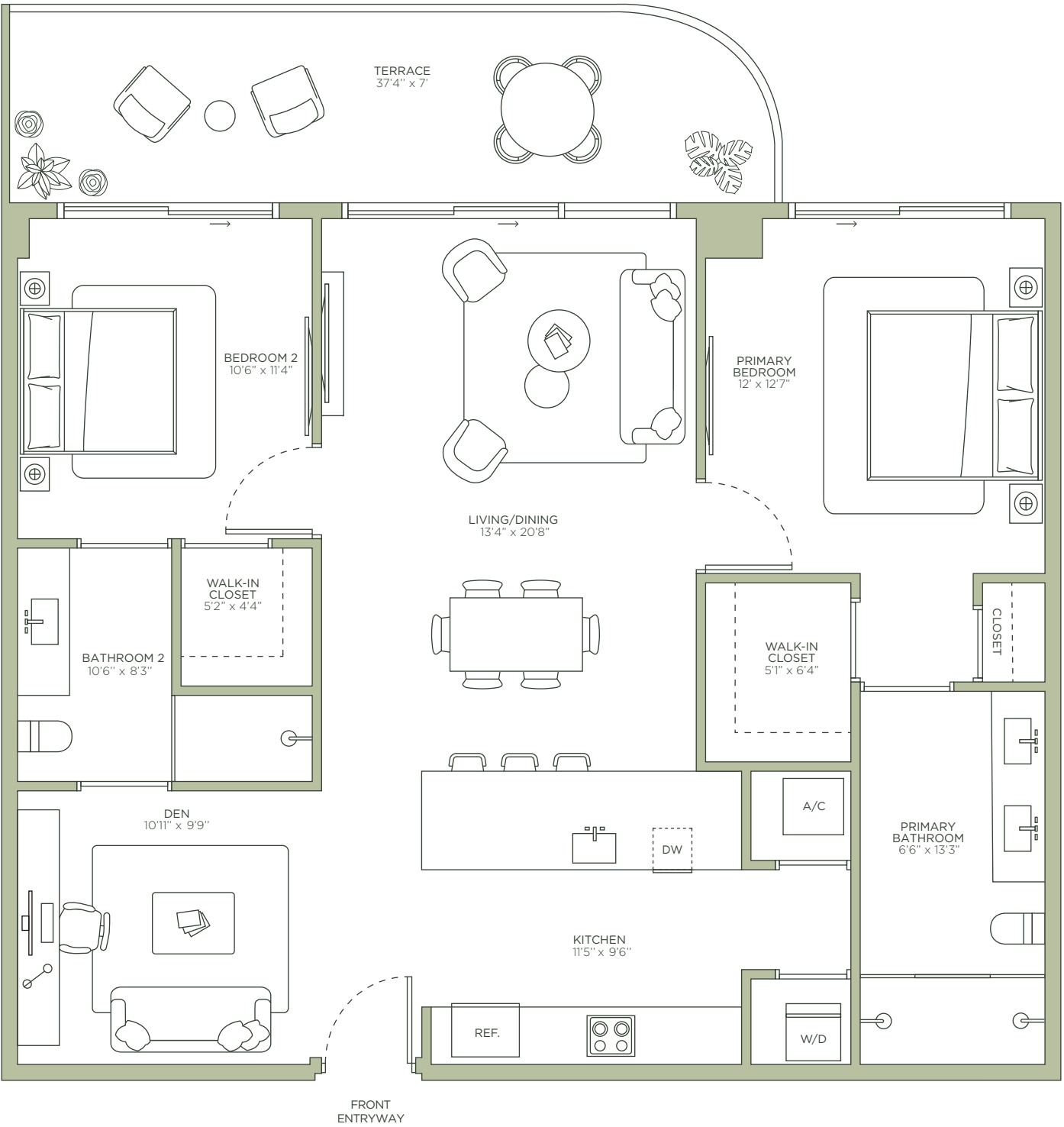
TOTAL	1,434 SQ FT   134 SQ M
INTERIOR	1,176 SQ FT   109 SQ M
EXTERIOR	258 SQ FT   25 SQ M



MIDTOWN PARK

BY PROPER

LUXURY RESIDENCES  
DESIGNED BY MEYER DAVIS STUDIO



ROSSO Development



By PROPER ARQUITECTONICA



ORAL REPRESENTATIONS CANNOT BE RELIED UPON AS CORRECTLY STATING THE REPRESENTATIONS OF THE DEVELOPER. FOR CORRECT REPRESENTATIONS, REFERENCE SHOULD BE MADE TO THE DOCUMENTS REQUIRED BY SECTION 718.503, FLORIDA STATUTES, TO BE FURNISHED BY A DEVELOPER TO A BUYER. THE DIMENSIONS AND SQUARE FOOTAGE STATED FOR ANY DEPICTED UNIT FLOOR PLAN ARE APPROXIMATE. THERE ARE VARIOUS RECOGNIZED METHODS FOR CALCULATING THE SQUARE FOOTAGE OF A UNIT. THE SQUARE FOOTAGE STATED HEREIN IS CALCULATED FROM THE EXTERIOR BOUNDARIES OF THE EXTERIOR WALLS TO THE CENTERLINE OF INTERIOR DEMISING WALLS WITHOUT DEDUCTIONS FOR CUTOUTS, CURVES, OR ARCHITECTURAL FEATURES. THIS METHOD TYPICALLY RESULTS IN QUOTED DIMENSIONS GREATER THAN THE DIMENSIONS THAT WOULD BE DETERMINED BY USING OTHER ACCEPTED METHODS. ALL DIMENSIONS ARE APPROXIMATE AND MAY VARY WITH ACTUAL CONSTRUCTION, AND ALL FLOOR PLANS AND DEVELOPMENT PLANS ARE SUBJECT TO CHANGE. THE SIZE AND CONFIGURATION OF BALCONIES AND TERRACES AND WINDOWS MAY VARY THROUGHOUT THE BUILDING. THE ILLUSTRATIONS AND IMAGES ARE CONCEPTUAL. THE FLOOR PLAN, UNIT LAYOUT, LOCATIONS OF WINDOWS, DOORS, CLOSETS, PLUMBING FIXTURES, MECHANICAL EQUIPMENT, APPLIANCES, STRUCTURAL ELEMENTS, ARCHITECTURAL DESIGN ELEMENTS AND THE USES, CONFIGURATIONS, AND ENTRIES TO ROOMS MAY BE CHANGED BASED ON FINAL APPROVED PLANS, PERMITTING, AND COMPLETED CONSTRUCTION. ALL DEPICTIONS OF FURNISHINGS, APPLIANCES, BUILT-INS, COUNTERS, AND OTHER MATTERS OF DETAIL, INCLUDING, WITHOUT LIMITATION, ITEMS OF FINISH AND DECORATION, ARE CONCEPTUAL ONLY AND ARE NOT NECESSARILY INCLUDED IN EACH UNIT. THE FURNITURE PLAN AND THE USES OF SPACE ILLUSTRATED ARE SUGGESTED USES ONLY AND NOT INTENDED TO GUARANTY OR REPRESENT ANY SPECIFIC USE OF SPACE AND MAY NOT BE INCLUDED WITH A UNIT PURCHASE. CONSULT THE DEVELOPER'S PROSPECTUS WHICH WILL BE PROVIDED TO YOU BY THE DEVELOPER TO LEARN WHAT IS INCLUDED WITH A UNIT PURCHASE AND TO REVIEW THE UNIT SQUARE FOOTAGE CALCULATION METHOD TO BE RELIED UPON. 9





MIDTOWN PARK

BY PROPER

# Residence 12

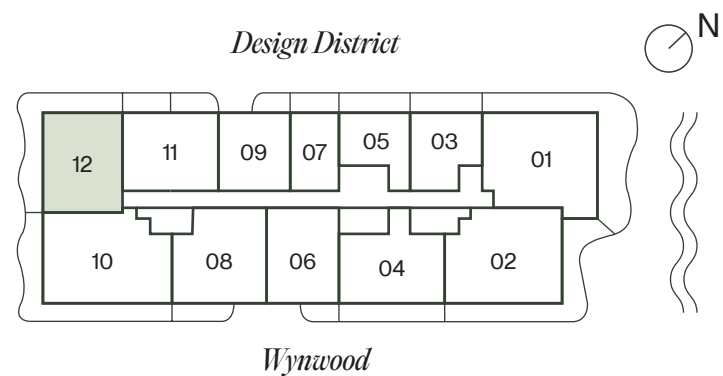
LUXURY RESIDENCES  
DESIGNED BY MEYER DAVIS STUDIO



# Residence 12

2 BEDROOMS | 2.5 BATHROOMS

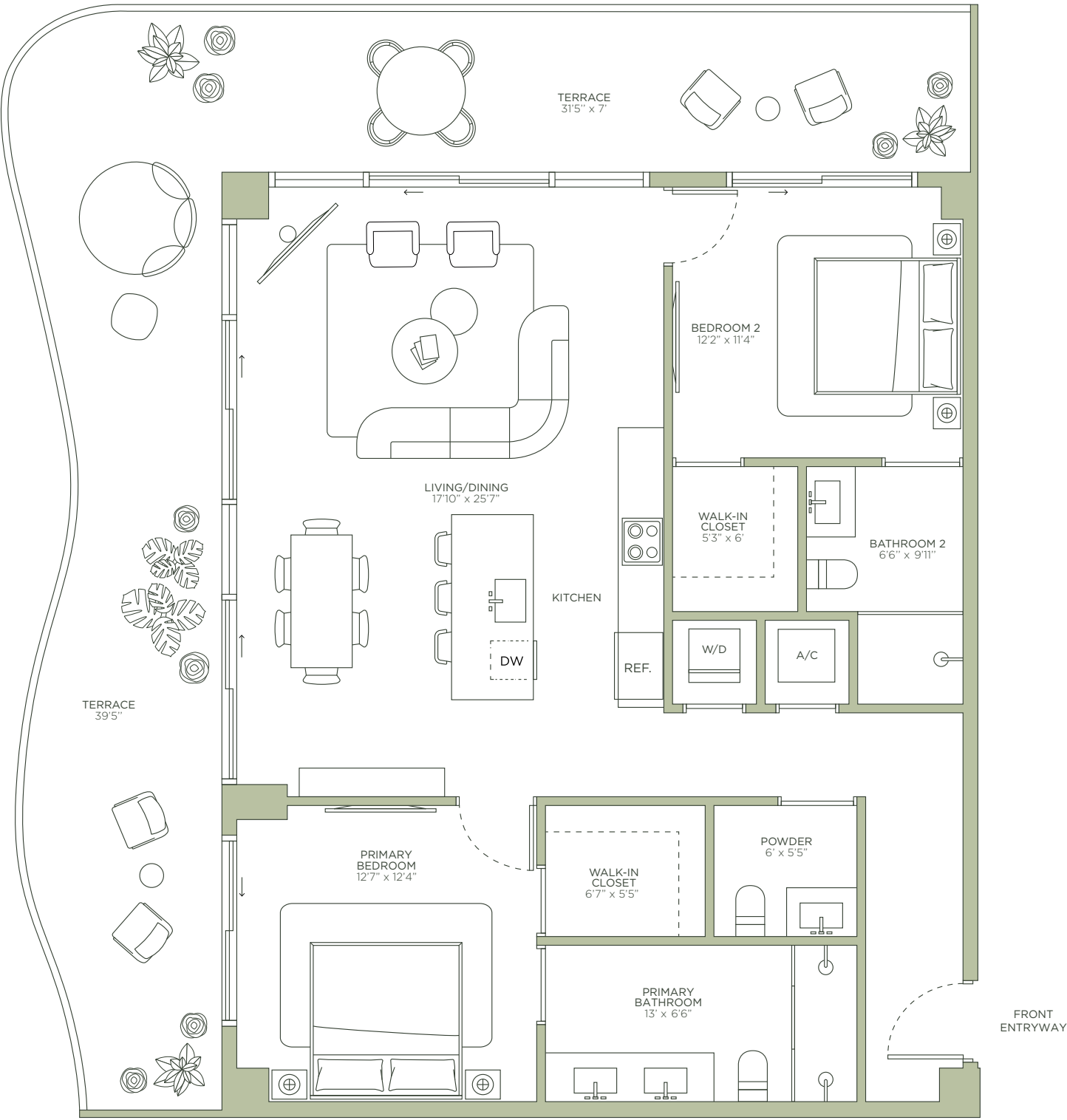
TOTAL	1,811 SQ FT   168 SQ M
INTERIOR	1,239 SQ FT   115 SQ M
EXTERIOR	572 SQ FT   53 SQ M



MIDTOWN PARK

BY PROPER

LUXURY RESIDENCES  
DESIGNED BY MEYER DAVIS STUDIO



ROSSO Development



By PROPER ARQUITECTONICA



ORAL REPRESENTATIONS CANNOT BE RELIED UPON AS CORRECTLY STATING THE REPRESENTATIONS OF THE DEVELOPER. FOR CORRECT REPRESENTATIONS, REFERENCE SHOULD BE MADE TO THE DOCUMENTS REQUIRED BY SECTION 718.503, FLORIDA STATUTES, TO BE FURNISHED BY A DEVELOPER TO A BUYER. THE DIMENSIONS AND SQUARE FOOTAGE STATED FOR ANY DEPICTED UNIT FLOOR PLAN ARE APPROXIMATE. THERE ARE VARIOUS RECOGNIZED METHODS FOR CALCULATING THE SQUARE FOOTAGE OF A UNIT. THE SQUARE FOOTAGE STATED HEREIN IS CALCULATED FROM THE EXTERIOR BOUNDARIES OF THE EXTERIOR WALLS TO THE CENTERLINE OF INTERIOR DEMISING WALLS WITHOUT DEDUCTIONS FOR CUTOUTS, CURVES, OR ARCHITECTURAL FEATURES. THIS METHOD TYPICALLY RESULTS IN QUOTED DIMENSIONS GREATER THAN THE DIMENSIONS THAT WOULD BE DETERMINED BY USING OTHER ACCEPTED METHODS. ALL DIMENSIONS ARE APPROXIMATE AND MAY VARY WITH ACTUAL CONSTRUCTION, AND ALL FLOOR PLANS AND DEVELOPMENT PLANS ARE SUBJECT TO CHANGE. THE SIZE AND CONFIGURATION OF BALCONIES AND TERRACES AND WINDOWS MAY VARY THROUGHOUT THE BUILDING. THE ILLUSTRATIONS AND IMAGES ARE CONCEPTUAL. THE FLOOR PLAN, UNIT LAYOUT, LOCATIONS OF WINDOWS, DOORS, CLOSETS, PLUMBING FIXTURES, MECHANICAL EQUIPMENT, APPLIANCES, STRUCTURAL ELEMENTS, ARCHITECTURAL DESIGN ELEMENTS AND THE USES, CONFIGURATIONS, AND ENTRIES TO ROOMS MAY BE CHANGED BASED ON FINAL APPROVED PLANS, PERMITTING, AND COMPLETED CONSTRUCTION. ALL DEPICTIONS OF FURNISHINGS, APPLIANCES, BUILT-INS, COUNTERS, AND OTHER MATTERS OF DETAIL, INCLUDING, WITHOUT LIMITATION, ITEMS OF FINISH AND DECORATION, ARE CONCEPTUAL ONLY AND ARE NOT NECESSARILY INCLUDED IN EACH UNIT. THE FURNITURE PLAN AND THE USES OF SPACE ILLUSTRATED ARE SUGGESTED USES ONLY AND NOT INTENDED TO GUARANTEE OR REPRESENT ANY SPECIFIC USE OF SPACE AND MAY NOT BE INCLUDED WITH A UNIT PURCHASE. CONSULT THE DEVELOPER'S PROSPECTUS WHICH WILL BE PROVIDED TO YOU BY THE DEVELOPER TO LEARN WHAT IS INCLUDED WITH A UNIT PURCHASE AND TO REVIEW THE UNIT SQUARE FOOTAGE CALCULATION METHOD TO BE RELIED UPON. 9